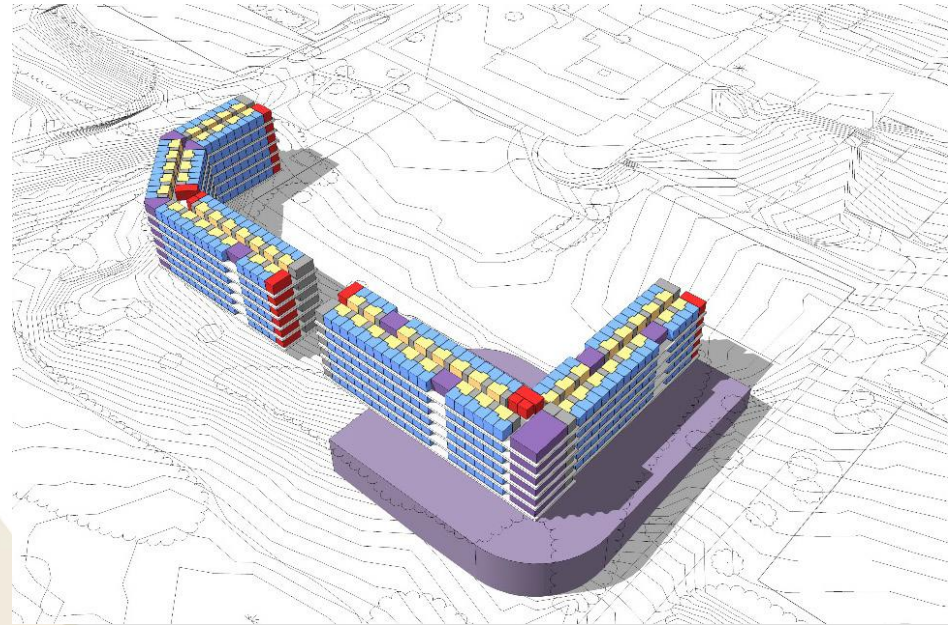


# Housing and Dining Hall Concept

- Create a new residential and dining neighborhood on the south side of campus, rather than the saturated north side
- South side location offers the opportunity for future expansion, as well as the development of future living learning communities
- Balance out campus residential housing and dining, placing the Oakland Center at a relatively equal distance from each end along a central campus corridor
- South location takes advantage of the only underutilized parking on campus (P32, P35 & P37)
- Create a new dining center in close proximity to several academic buildings, relieving some pressure on Vandenberg Dining Center and Oakland Center Food Court

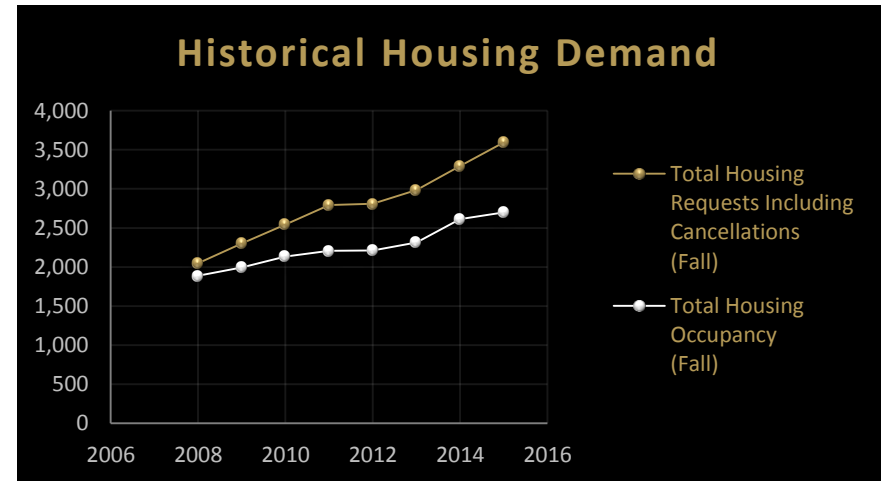
# Building Features

- 228,083 sq. ft., six-floor residence hall comprised of 750 beds, similar in amenities to Oak View Hall
- 600 seat dining hall
- 200 seats of classroom space(s)
- Public area spaces and services similar to Oak View Hall



# Historical Housing Demand

Year (Fall)	Total Housing Requests Including Cancellations (Fall)	Total Housing Occupancy (Fall)
2008	2,047	1,889
2009	2,302	1,993
2010	2,544	2,134
2011	2,792	2,207
2012	2,809	2,211
2013	2,984	2,315
2014	3,294	2,612
2015	3,596	2,699



# Projected Growth and Demand

Over the last eight years, the average number of submitted housing contracts has increased by 221 annually. By fall 2018, Oakland University should accrue a demand increase of approximately 663. This estimate, coupled with the potential loss of 93 beds from a repurposed Fitzgerald House, would accurately size this project at 750 beds.



# Project Budget

**\$77,300,000 Estimated Project Costs**



# Key Project Timeline Factors

## Building desired grand opening: August 2018

- Support of Facilities Committee to issue RFP for architectural and engineering services, commencing in October 2015
- Selection of A/E firm in November 2015
- Seek Board of Trustees approval of A/E firm in December 2015
- Development of Schematic Design January 2016 through June 2016
- Seek Board of Trustees approval of schematic design in June 2016
- Construction June 2016 through August 2018