

Revised: 10-10-17

ATTACHMENT A

OAKLAND UNIVERSITY

Fiscal Year 2019 Five-Year Capital Outlay Plan

Table of Contents

I.	Mission Statement	p. 3
II.	Instructional Programming	p. 3
	An Engaged University	p. 3
	A Leading University	p. 4
	A Growing University	p. 5
	Applied Research and Economic Development	p. 6
	Partnerships	p. 7
	Instructional Technology	p. 9
	Technological Enhancements	p. 10
	Cultural and Performing Arts	p. 11
	Community Outreach	p. 11
	Academic and Student Life Enhancements	p. 12
	Degree Programs	p. 15
III.	Staffing and Enrollment	p. 27
	Figure 1 - Faculty and Staff Full Time Equivalent	p. 27
	Figure 2 - Student Credit Hours	p. 28
	Figure 3 - Degrees Awarded by Program	p. 29
	Figure 4 - Enrollment Trends	p. 30
	Figure 5 - Enrollment Projections	p. 31
	Figure 6 - General Fund Sq. Feet per Student in Michigan	p. 32
	Future Staffing Needs	p. 33
	Average Class Size	p. 33
IV.	Facility Assessment	p. 33
	Utilization Rates	p. 33
	Mandated Standards	p. 33
	Functionality	p. 33
	Replacement Value of Facilities	p. 35
	Utility Systems Condition	p. 35
	Facility Infrastructure Condition	p. 35
	Land	p. 36
	Buildings Obligated to the State Building Authority	p. 36
	Classroom Utilization Reports	p. 37
	Facility Condition Assessment	p. 59
V.	Implementation Plan	p. 69
	State Funding Request	p. 69
	University Funded Priorities	p. 69
	Future Projects Under Construction	p. 70
	Plant Renewal/Deferred Plant Renewal	p. 70

I. Mission Statement

Oakland University is a preeminent metropolitan university that is recognized as a student-centered, doctoral research institution with a global perspective. We engage students in distinctive educational experiences that connect to the unique and diverse opportunities within and beyond our region.

Through faculty-driven and student-engaged research, scholarship, and creative activity, Oakland University advances knowledge and art in a diverse and inclusive environment.

Oakland University is an active community partner providing thriving civic, cultural, and recreational opportunities and valuable public service.

Strategic Plan

Goal #1: Foster student success through a robust teaching and learning environment and comprehensive student services.

Goal #2: Be recognized as a strong research and scholarly environment focused on creative endeavors and on the discovery, dissemination and utilization of knowledge.

Goal #3: Become a leader in serving the needs and aspirations of our communities and region through expanded community relationships, institutional reputation and visibility, and engagement.

Affirmation Statement: The University's three goals developed during several months of planning work are a concise expression of our institutional aspirations. Thus, it is important to recognize that student success is meant to encompass the full range of student experiences and opportunities while at the university. We also recognize that an intrinsic part of achieving these goals must include ensuring the university's excellence and the attainment of its mission through effective institutional processes, shared decision-making and transparent best practices.

II. Instructional Programming

Oakland University is a doctoral/research University located in Rochester, Michigan, within Oakland County. Through unique and distinctive academic experiences, Oakland is preparing students to make meaningful and substantial contributions to the workplace, academia and the community.

An Engaged University

Oakland University is the only comprehensive, doctoral-level university located in Oakland County, Michigan. Recognized as one of the country's 90 doctoral research universities by the Carnegie Foundation for the Advancement of Teaching, the University offers students opportunities to work directly on research with expert faculty.

Through a multitude of partnerships with hospitals, Fortune 500 companies, individuals, cities, government agencies and educational institutions, Oakland helps communities solve problems and build thriving, sustainable businesses. These associations reward students with internship and co-op opportunities and provide University researchers access to the latest technology tools. Oakland's leadership with these partnerships also significantly impacts economic development and commercialization opportunities.

Oakland, in partnership with Beaumont Health System, opened the first M.D.-granting medical school in Oakland County with an inaugural class of 50 students in August 2011. Fall 2017 cohort enrollment had increased to 122, and the school recognized 89 new doctors at the May 2017 commencement. The first new medical school started in Michigan in a generation, the Oakland University William Beaumont School of Medicine (OUWB) is expected to help boost the local and regional economies by generating new jobs and attracting medical, business and academic leaders from around the nation. OUWB was designed to transform medical education by emphasizing holistic physician development – a patient-centered approach to the delivery of health care that is grounded in evidence-based medical science.

Oakland offers a strong undergraduate program founded in the liberal arts and basic sciences and is widely recognized for excellence in biomedical sciences and other health-related programs. It has a School of Nursing, School of Health Sciences, renowned Eye Research Institute, and highly-regarded programs in bioengineering, informatics and nanotechnology, health and environmental chemistry, medical physics and biological communication.

Oakland's other professional schools (Business Administration, Education and Human Services, Engineering and Computer Science), as well as the College of Arts and Sciences, have been recognized nationally for various accomplishments.

A Leading University

Oakland University is a preeminent metropolitan university that is recognized as a student-centered, doctoral research institution with a global perspective. It engages students in distinctive educational experiences that connect to the unique and diverse opportunities within our region and beyond.

Through faculty-driven and student-engaged research, scholarship and creative activity, Oakland University advances knowledge and art in a diverse and inclusive environment. Oakland is also an active community partner, providing thriving civic, cultural, and recreational opportunities and valuable public service.

In addition to equipping graduates with a broad base of knowledge and top-notch intellectual and experiential opportunities, Oakland is equally dedicated to the development of students in all aspects of their lives. Through a carefully thought-out collection of campus life

experiences, the University gives students opportunities to conduct research and participate in internship and co-op experiences.

A Growing University

Oakland continues to thrive as a public institution with:

- 10 percent increase in overall enrollment over the past decade
- Increased underrepresented minority student enrollment since 2014
- 863 international students enrolled in fall 2017
- Six residence halls that house more than 13 percent of the student population
- Projected enrollment growth over the next decade

Oakland has continued to keep pace with growth by providing new and advanced academic, research and support facilities. Recent capital projects have included:

- construction of the Human Health Building
- construction of the Engineering Center
- renovation of Hannah Hall laboratories
- renovation of O'Dowd Hall to provide additional classrooms and space for the Oakland University William Beaumont School of Medicine
- creation of the First Year Advising Center
- construction of the 504-bed Oak View residence hall, which includes a new home for the Honors College
- upgrades to the Recreation and Athletics Outdoor Complex, creating a track and field complex, tennis courts, and synthetic turf soccer fields
- construction of a second parking structure with 1,245 spaces
- construction of an Athletic Dome through a public-private partnership to provide an indoor athletic practice facility
- completion of the 151-foot-tall, 49-bell Elliott Tower (100 percent funded by Hugh and Nancy Elliott)
- to be completed in the fall of 2018, the Oakland Center is undergoing a major renovation that includes 60,000 square feet of student focused spaces
- to be completed in the fall of 2018, the new Sothern Housing building will include 750 beds, and a dining facility with the capacity to accommodate 750 residents, students, and staff. Also four general-purpose classrooms with 200 seats

A campus master plan accounts for expected growth and includes:

- renovation and restoration at Meadow Brook Hall
- a third parking structure
- housing facilities to expand the number of beds on campus
- the identification of potential building sites
- a research and development park
- a new humanities facility

Several upgrades, renovations and technological improvements to various classrooms, laboratories and common areas were recently completed. Primary laboratories to receive

extensive renovation were in chemistry, biology, physics, and art and art history – all programs that have experienced large increases in student enrollment or are key components of Oakland’s biomedical and health care academic offerings.

Applied Research and Economic Development

Oakland offers knowledge, resources and programs that help companies grow. With its research labs, facilities, faculty and students, the University assists companies in transforming ideas into new business developments, turning dreams into reality and giving vitality to vision. At the OU INC and Macomb-OU business incubators, the University is committed to assisting startups and spin-offs to locate and secure technology development, business planning and capital acquisition, as well as providing opportunities for the licensing of Oakland University’s intellectual property. To foster emerging discoveries, the University features several noted research centers, including the:

- Eye Research Institute (ERI)
- Fastening and Joining Research Institute (FAJRI)
- Galileo Institute for Teacher Leadership
- Center for Autism
- Center for Biomedical Research (CBR)
- Automotive Tribology Center (ATC)
- Center for Applied Research in Musical Understanding (CARMU)
- Center for Integrated Business Research and Education (CIBRE)
- Center for Robotics and Advanced Automation (CRAA)
- Center for Social and Behavioral Research (CSBR)
- Clean Energy Research Center (CERC)
- Ken Morris Center for the Study of Labor and Work
- Institute for Stem Cell and Regenerative Medicine (ISCRM)

OU SmartZone Business Accelerator: OU INC is a SmartZone Business Accelerator in collaboration with the City of Rochester Hills and Michigan Economic Development Corporation, and partners with Oakland County and Automation Alley. OU INC provides entrepreneurial resources and strategic business solutions for developing business ventures and accelerates ideas to market. It fosters a healthy environment for the growth of new startup companies and provides support for existing entities through its facility and resources. The OU INC facility provides business resources, including those offered by the Clean Energy Research Center and the Integrated Resource Center, as well as access to the expertise and skills of staff, faculty, students and corporate partners.

The Macomb-OU INCubator provides entrepreneurial resources, business solutions, and access to student interns and proactive support to businesses at every stage in an effort to help startups on their path to success. The goal of the incubator is to create jobs and advance business development by identifying sources of necessary financing for growth; helping develop business strategy; consulting; and providing access to appropriate rental space, shared business services, equipment and technology support services in the areas of

defense, homeland security, advanced manufacturing and technology. It is a part of the Velocity Collaboration Center, a joint venture between Oakland University, Macomb County and the city of Sterling Heights.

Fastening and Joining Research Institute (FAJRI): A collaboration between Oakland University, the U.S. Congress, the U.S. Army Tank Automotive Research and Engineering Center (TARDEC), the National Science Foundation and Fiat Chrysler Automobiles, FAJRI is an externally funded, academic, nonprofit research facility that is solely dedicated to exploring fundamental and applied research to develop and disseminate new technology for the fastening and joining of materials such as metals, composites, polymers and biomaterials.

Center for Robotics and Advanced Automation: Funded by the National Science Foundation, the Big Three automotive companies and the Department of Defense, the center works on smart control technology with industrial and defense applications, intelligent robotics, homeland security technology, suspension systems, digital shearography, and global satellite communication technology and systems.

Eye Research Institute (ERI): This unique center of ophthalmic research collaborates with the department of ophthalmology at Beaumont Health System on research and provides a joint ophthalmology residency and fellowship program. Since 1968, ERI scientists have received over \$50 million in support from private and federal health agencies.

Center for Biomedical Research: This center provides core facilities and pilot funding for the applied biomedical research efforts of Oakland University's life scientists. Key research includes eye diseases, chemical toxicology, medical physics and biological communication.

Partnerships

Oakland has leveraged its unique Auburn Hills/Rochester Hills/Rochester location in the heart of Michigan's technology and automotive corridor by forging strategic partnerships with hospitals, Fortune 500 and international companies, individuals, cities, government agencies and educational institutions located as near as Southeast Michigan and as far as other countries. The benefits of these associations are far-reaching: students are rewarded with internship and co-op opportunities, University researchers have access to the latest technology tools, and the region benefits through new business opportunities and a stronger economy.

Eugene Applebaum College of Pharmacy and Health Sciences: An alliance between Oakland University's School of Health Sciences and Wayne State University (WSU) provides Oakland's undergraduates a unique opportunity to earn a doctorate in pharmacy. Students can earn their bachelor's degree at OU taking pre-pharmacy courses. During their senior year at OU, students take pharmacy classes at WSU. Their senior year at OU is also their first year at WSU, giving students the opportunity to complete a doctoral program in seven years instead of eight, saving time and money.

Wayne State University Law School (Wayne Law): Oakland University's Department of

Political Science in the College of Arts and Sciences, and the Bachelor of Integrative Studies Program, have both partnered with Wayne Law to offer undergraduate students the opportunity to obtain two degrees in a shorter timeframe. This will allow students from premier and accredited institutions to obtain degrees at a lower cost. During the fourth (senior) year at Oakland University, students will attend Wayne Law and begin their first two semesters of credits at Wayne Law, transferring back to OU for completion of their bachelor's degree. Students must take the Law School Admission Test and meet all other Wayne Law admission requirements.

Crittenton Hospital Medical Center: Crittenton Hospital Medical Center has funded a \$2 million endowed professorship in Oakland University's School of Nursing that is changing the clinical education and training of nursing students. The nursing professorship conducts patient-focused research on the science and best practices of nursing, an area that has not received much attention to date. Students in the program conduct all of their clinical rotations at Crittenton Hospital Medical Center using the relationship-based care (RBC) model. RBC moves from an individual expert dynamic to one of engaging patients, identifying options, relaying experiences and empowering patients and their families to make the best treatment decisions.

OU Anton/Frankel Center: Oakland University expanded its reach in Macomb County with the opening of the Anton/Frankel Center (AFC) in fall 2011. With 25,422-square feet of space to house classrooms, offices for advising, student support services, faculty and staff, the AFC signals OU's continued commitment to bringing exceptional academic opportunities to the people of Macomb County. Programs offered at the AFC include bachelor's degrees in criminal justice, psychology, marketing and social work; and master's degrees in public administration and business administration.

The University of Botswana: Oakland University's Department of Counseling in the School of Education and Human Services, in partnership with the University of Botswana (UB), provides student and faculty exchanges, video conferences, and partnerships in research, scholarship, teaching and service.

Israel's Max Stern Academic College: Oakland University offers global experiences for students and faculty through a myriad of overseas programs, including a partnership with Max Stern Academic College in Emek Yezreel, Israel. Students and faculty on both campuses will experience different cultures through research opportunities, academic coursework and student life.

The Pawley Learning Institute: Established through a gift from Dennis Pawley, an OU alumnus and former chair of the OU Board of Trustees, the Pawley Learning Institute provides instruction and research on concepts and training that improve organizational practices in business, education and public service sectors.

Instructional Technology

Access to user-friendly instructional technology resources in the classroom are a standard expectation of Oakland's faculty and students. All general purpose classrooms and a growing number of conference rooms and labs are equipped with enhanced instructional technology resources.

University classrooms are equipped with the following:

- Multimedia workstation containing: a PC computer hardwired to campus network; a digital document camera; an electronic whiteboard; a DVD player; an interface to plug in a user provided laptop computer or mobile device, an interface to plug in an accessory analog audio/video device; sound system; and an electronic control system for managing the room's systems and components.
- Ceiling mounted video/data projection system connected to the multimedia workstation
- Wireless network access
- A lecture capture system (Panopto) is also available to record classroom instruction and post recordings online for student review
- Room microphones and video cameras are also either currently installed or available on an as-needed basis

Oakland provides course offerings via distance education. The three modes of delivery include live two-way interactive video between two or more sites, synchronous web-based instruction to individual students and asynchronous web-based online learning. The internet is the current transmission vehicle for the University's distance education course offerings.

Software-based video collaboration tools such as WebEx, Google Hangouts and Skype are also available for the University community to conduct business at a distance. These types of technologies save time and money by providing a communication tool that allows for the sharing of voice, video and content between two or more computers or mobile devices. The growth in web-based learning and communications models will continue to expand in the foreseeable future.

Oakland University uses Moodle for their web-based Learning Management System (LMS). Moodle can be used as a full web-based solution where no face-to-face teaching is required or as a web-supplemented course resource that enhances the standard face-to-face classroom contact between faculty and students. Moodle offers online activities such as discussion boards, chat, quizzes, grade book, file storage and display, journals, workshops, and automated lessons. Moodle is also the portal to access lecture capture recordings. Another separate instance of Moodle is supported via e-Portfolio. It includes digital space for student, faculty, and staff career Portfolios. A third instance of Moodle, called e-Space, contains department assessment activities, research, academic committees, advising and other miscellaneous academic activities. Another teaching tool being utilized is 3D spaces and virtual reality. Second Life is an experimental island where several faculty meet their classes and e-LIS opened up their Virtual Reality Lab in Fall 2016, and are working with

faculty on innovative ways to utilize virtual reality in higher education for an immersive learning experience.

During the winter 2017 term, Oakland offered 269 course sections that are fully online to 4,469 distinct students (~25 percent of the total student body). Approximately 67 percent of all course sections are providing some level of web supplemented activity. Oakland also offers 16 online degree and certificate programs. Scantron machines, i>clicker, and other software are supported centrally for grading exams and processing course evaluations.

Technological Enhancements

Oakland University is dedicated to enhancing education through the use of contemporary and emerging technologies and continues to commit significant resources to technological enhancements, including:

- Complete administrative software suite.
- Online registration.
- Extensive wired and wireless network to all classroom buildings and surroundings.
- Elliott Hall of Business and Information Technology, a 74,000-square foot, technology-rich facility.
- The Pawley Hall of Education & Human Services Building with 24 enhanced technology classrooms.
- Interactive television and video conferencing capability to supplement instruction and administrative program activity.
- Online web-based learning management system utilizing Moodle.
- Other teaching and learning software, such as Panopto, Akindi, Scantron, Second Life, Camtasia, i>clicker, and Adobe Captivate.
- An Information Commons in Kresge Library with a significant number of computer work stations for the patrons.
- A remodeled O'Dowd Hall has become the home of the Oakland University/William Beaumont School of Medicine, and includes the addition of significant technology enhancements within classrooms and meeting spaces.
- Oakland's Macomb County site is housed within the Anton/Frankel Center located in Mount Clemens and provides 25,422 square feet of classroom, office and meeting space.
- Major classroom renovation projects that included significant technology enhancements in older campus buildings continue to be a priority objective.
- A Human Health Building (HHB) provides the University community with an all-digital classroom technology systems within all instructional spaces, a state-of-the-art Nursing SIM lab, and many technology enhancements within specialty laboratories. The HHB has been recognized at a LEED Platinum building, the first Platinum building on a University campus in the State of Michigan.
- An Engineering Center building opened in the fall of 2014 with state of the art instructional facilities, labs and resources.

- Nine instructional classrooms opened during the fall of 2015 which were created within existing University space that was repurposed and remodeled to include the most current instructional technology resources.
- Oakland is a partner with the City of Auburn Hills in the collaboration of a University Center which opened in January of 2014.
- The University is also partnering with the Pontiac Public Schools system and during the summer of 2015 created a collaboration center and classroom in downtown Pontiac.

Cultural and Performing Arts

Oakland's contribution to the arts has moved beyond local boundaries to secure a place of prominence in the region. Historically, OU has had a strong performing arts program with record-high enrollment numbers.

The School of Music, Theatre and Dance, formerly the Department of Music, Theatre and Dance, offers more than 140 student and faculty performances throughout the academic year. Guests enjoy everything from musicals and intimate recitals to experimental plays and innovative dance performances. OU has earned a reputation for taking artistic risks, developing gifted artists, nurturing arts partnerships and achieving new heights of quality and professionalism.

Meadow Brook Hall is the sixth largest historic house museum in the United States and is renowned for its superb craftsmanship, architectural detailing and grand scale. Built between 1926 and 1929 as the residence of Matilda Dodge Wilson (widow of auto pioneer John Dodge) and her second husband, lumber broker Alfred G. Wilson, the 110-room, 88,000-square-foot, Tudor-revival style mansion is complete with vast collections of original art and furnishings. In 2012, the U.S. Department of the Interior designated the hall a National Historic Landmark, the highest recognition for historic properties in the United States.

For more than 40 years, the Oakland University Art Gallery (OUAG), housed in the Department of Art and Art History, has delivered diverse, museum-quality art to Metro Detroit audiences. From September to May, the OUAG presents up to six different exhibitions – from cutting-edge contemporary art to projects exploring historical and global themes. The gallery also offers lectures, performances, tours, special events and more. Nearly 15,000 people visit OUAG each year to experience art and cultural programs.

OU's outdoor music series, the Meadow Brook Music Festival, hosts today's top concerts including rock, alternative, adult contemporary, pop, country, and rhythm and blues; a wine and food festival; stand-up comedians; and family entertainment in the Meadow Brook Amphitheater.

Community Outreach

In the more than 10 years since Oakland University initiated a formal partnership with the City of Rochester through the Rochester Downtown Development Authority (DDA), much has been accomplished with new initiatives added over time.

The partnership presents many opportunities for the OU community to benefit from joint educational and cultural programming. Areas of emphasis for students, faculty and alumni have included employment, internships, research and development projects, business development assistance, community service projects, promotions and business discounts, and opportunities to showcase the arts, theatre and music to complement classroom work.

The University annually hosts the Rochester Area Chamber of Commerce's Regional Outlook Luncheon and also maintains a support partnership with the Rochester Older Person's Commission. Students, alumni, faculty and staff enjoy discounts at dozens of participating stores and restaurants through the OU GO card. The University also partners with the Rochester Regional Chamber of Commerce for joint programming and assistance. Oakland proudly partners with its other neighboring communities including Auburn Hills, Pontiac and Rochester Hills.

OU and the Pontiac community have a long history together through programs such as GEAR UP (Gaining Early Awareness and Readiness for Undergraduate Programs), which helps students in the Pontiac as well as Oak Park school districts; Project Upward Bound, which helps 120 students each year finish high school and develop the social and cultural skills needed to realize their dreams and succeed in college and society; and through the Wade H. McCree Jr. Incentive Scholarship program, which assures that students who meet specific criteria will be awarded a full-tuition scholarship to Oakland when they graduate from high school. Recently, Oakland initiated a laboratory school initiative that places University faculty and education students in Pontiac schools to help institute and maintain instruction best practices in the classroom. The initiative is developed after a highly successful model implemented in a neighboring Auburn Hills school. In addition, Oakland University and Pontiac Schools are also working together to make Parent University a valuable community resource with a program that encourages families to connect to schools and the community, providing resources that help parents become full partners in their child's education.

Oakland University is involved in various community service efforts in Macomb County, including the Let's Move Festival of Races in downtown Mount Clemens and emergency preparedness education programs. In addition, Oakland University students and staff, including the OU Dance team, Cheer team and the Grizz, participated in the annual Macomb County Santa Parade last year.

In 2016, members of the Oakland University community opened their hearts and their wallets, making generous gifts to the All-University Fund Drive. A total of 926 faculty, staff and retirees contributed \$481,984.

Academic and Student Life Enhancements

All students should have the benefit of academic support services, especially mentoring and small learning communities, aimed at helping them make the necessary academic and social adjustments to achieve collegiate success.

OU's First Year Advising Center connects new students with University advisers, peer mentors, graduate assistants, faculty and various support services on campus to provide a more effective student experience, especially during the critical first year.

The award-winning Oakland University Trustee Academic Success (OUTAS) scholarship program is a national model for retaining and graduating a diverse group of high-achieving university students. OUTAS was established to counter the declining rates of minority retention, graduation and student performance.

The Writing Center in Kresge Library, established through a leadership gift from OU Professor Emeritus of English Joan Rosen, assists hundreds of students each year. The Writing Center provides assistance to students to develop and incorporate effective writing and communication skills in all subject areas.

Oakland's Honors College offers highly motivated students seeking a rich, valuable and challenging undergraduate education an intimate, intellectually friendly and challenging atmosphere. Small classes average 10 to 20 students and allow for more interaction between the professor and students. The program offers a specially designed core of general education courses in art, literature, western civilization, social science, global perspectives, mathematics, logic, computer science, natural science and technology.

OU has more than 300 student organizations that encourage student involvement and social opportunities.

The Recreation and Athletics Center hosts a number of activities throughout the year in which students may get involved, including intramural and club sports, group exercise classes and wellness-related programs. This multi-purpose facility draws more than 25,000 visits per month for recreational and sports programs.

New outdoor recreation and athletics facilities accommodate NCAA Division I athletic events including tennis and track and field meets, club and intramural sports competitions, and a variety of fitness and recreational activities welcoming university students, faculty, staff and community visitors.

Oakland offers a strong undergraduate program founded in the liberal arts and basic sciences and is widely recognized in for excellence in biomedical sciences and other health-related programs. It has a School of Nursing, School of Health Sciences, renowned Eye Research Institute, and highly regarded programs in bioengineering, informatics and nanotechnology, health and environmental chemistry, medical physics, and biological communication. Oakland's other professional schools (Business Administration, Education and Human Services, and Engineering and Computer Science), as well as the College of Arts and Sciences, have been recognized nationally for various accomplishments. In addition, to equipping graduates with a broad-base of knowledge and top-notch intellectual and experiential opportunities, Oakland is equally dedicated to the development of students in all aspects of their lives. Through a carefully thought-out collection of campus-life experiences,

the University gives students opportunities to conduct research and participate in internships and co-op experiences.

In 2016, the Office of Student Success and Experiential Learning Center was developed to embrace the University's mission to "engage students in distinctive educational experiences that connect to the unique and diverse opportunities within and beyond our region." The office supports student retention by helping students make the most of their second academic year, aiding those short on credits, guiding displaced workers through the workforce development system, providing assistance to those falling behind in a course and assisting in an overall effort to help student complete their degree.

In August 2017, the Oakland University Board of Trustees voted to approve the creation of a School of Music, Theatre and Dance. This move follows a consistent expansion and transformation of programs offered by the Department of Music, Theatre and Dance over the past 32 years. The growth of music, theatre and dance from a department into a school will help increase the University's visibility and position within these three fields throughout the state and region, creating greater opportunities for students.

OAKLAND UNIVERSITY

UNDERGRADUATE DEGREE PROGRAMS

College of Arts and Sciences (104)

Bachelor of Arts – CASBA (53)

- 2810 Anthropology
- 2815 Anthropology – Modified w/Concentration in Linguistics
- 1055 Art History
- 1105 Biology
- 1230 Chemistry
- 1609 Chinese Studies
- 1450 Cinema Studies
- 1453 Cinema Studies/Filmmaking Specialization
- 2705 Communication
- 1420 Creative Writing
- 2875 Criminal Justice
- 2880 Criminal Justice w/Special in Information Security and Assurance
- 2881 Criminal Justice w/Special in Homeland Security
- 3700 Economics
- 1405 English
- 1410 English – Modified w/Concentration in Linguistics
- 1980 French Language and Literature
- 1985 French – Modified
- 2015 German w/Concentration in German Studies
- 2010 German Language and Literature
- 2020 German – Modified
- 1096 Graphic Design
- 1505 History
- 1045 Independent Major
- 2510 International Relations
- 2040 Japanese Language and Literature
- 2045 Japanese – Modified
- 1614 Japanese Studies
- 2735 Journalism
- 2060 Latin American Language and Civilization
- 1625 Latin American Studies
- 1700 Liberal Studies
- 1705 Linguistics
- 1710 Linguistics – Modified
- 1805 Mathematics
- 2375 Philosophy
- 2405 Physics
- 2515 Political Science
- 2605 Psychology
- 2615 Psychology – Modified w/Concentration in Linguistics
- 2744 Public Relations and Strategic Communication

2820 Sociology
2805 Sociology/Anthropology
2825 Sociology – Modified w/Concentration in Linguistics
2100 Spanish Language and Literature
2110 Spanish – Modified
1075 Studio Art – Specialization in Drawing
1090 Studio Art - Specialization in New Media
1080 Studio Art – Specialization in Painting
1085 Studio Art – Specialization in Photography
2130 Two Modern Languages
2870 Writing and Rhetoric
2865 Women and Gender Studies

Bachelor of Science – CASBS (14)

1905 Actuarial Science
1835 Applied Statistics
1225 Biochemistry
1105 Biology
1125 Biology – Modified w/Specialization in Anatomy
1120 Biology – Modified w/Specialization in Cell-Molecular Biology
1130 Biology – Modified w/Specialization in Microbiology
1109 Biomedical Sciences
1111 Biomedical Sciences – w/Specialization in Anatomy
1230 Chemistry
1805 Mathematics
2420 Medical Physics
2405 Physics
2530 Public Administration and Public Policy

Bachelor of Science – ENVSCI (2)

1252 Environmental Science/Specialization Sustainability and Res. Mgt.
1257 Environmental Science/Specialization in Environmental Health

Bachelor of Social Work – BSW (1)

2860 Social Work

K-12 Educational Programs (10)

2292 Dance Education w/K-12 Certification
1992 French w/K-12 Certification
2027 German w/K-12 Certification
2047 Japanese w/K-12 Certification
2122 Spanish w/K-12 Certification
1076 Studio Art – w/K-12 Specialization in Drawing
1091 Studio Art – w/K-12 Specialization in New Media
1081 Studio Art – w/K-12 Specialization in Painting
1086 Studio Art – w/K-12 Specialization in Photography

1093 Studio Art – w/K-12 Specialization in Graphic Design

Secondary Education Programs (6)

- 1140 Biology w/Secondary Ed
- 1240 Chemistry w/Secondary Ed
- 1430 English w/Secondary Ed
- 1515 History w/Secondary Ed
- 1825 Mathematics w/Secondary Ed
- 2430 Physics w/Secondary Ed

College of Arts and Sciences – School of Music, Theater and Dance

Bachelor of Arts – BA (4)

- 2290 Dance
- 2291 Dance Education
- 2205 Music
- 2294 Theatre

Bachelor of Fine Arts – BFA (4)

- 2283 Acting
- 2290 Dance
- 2285 Musical Theatre
- 2296 Theatre Design & Technology

Bachelor of Music – BM (9)

- 2360 Choral/General Music Education
- 2363 Choral/General Music Education/Performance
- 2362 Instrumental/General Music Education
- 2364 Instrumental/General Musical Education Performance
- 2265 Music – Instrumental Performance
- 2245 Music – Piano Performance
- 2247 Music – Piano Pedagogy
- 2248 Music – Piano Performance and Pedagogy
- 2240 Music – Voice Performance

School of Business Administration (14)

Bachelor of Science – SBABS (14)

- 3100 Accounting
- 3705 Business Economics
- 3700 Economics
- 3200 Finance
- 3300 General Management
- 3400 Human Resource Management
- 3500 Management Information Systems
- 3510 Management Information Systems w/Special in Business Analytics
- 3520 Management Information Systems w/Special in Information Security
- 3600 Marketing

- 3806 Operations Management
- 3816 Operations Management w/Special in Supply Chain Management
- 3826 Operations Management w/Special in Lean/Quality Management
- 3836 Operations Management w/Special in Project Management

School of Education and Human Services (2)

Bachelor of Science (2)

- 4120 Elementary Education
- 4320 Human Resource Development

School of Engineering and Computer Science (6)

Bachelor of Science (2)

- 5020 Computer Science
- 5070 Information Technology

Bachelor of Science in Engineering (4)

- 5120 Computer Engineering
- 5140 Electrical Engineering
- 5185 Industrial & Systems Engineering
- 5160 Mechanical Engineering

School of Health Sciences (12)

Bachelor of Science (12)

- 6070 Applied Health Sciences
- 6161 Biomedical Diagnostic and Therapeutic Sciences
- 6042 Environmental Health and Safety
- 6020 Health Sciences
- 6167 BDTS: Medical Laboratory Science
- 6162 BDTS: Cytotechnology
- 6163 BDTS: Histotechnology
- 6165 BDTS: Nuclear Medical Technology
- 6166 BDTS: Radiation Therapy
- 6168 BDTS: Radiologic Technology
- 6169 BDTS: Preprofessional
- 6050 Wellness, Health Promotion, and Injury Prevention

School of Nursing (3)

Bachelor of Science in Nursing (3)

- 7020 Nursing
- 7040 Nursing (Completion Sequence)
- 7050 Accelerated Second Degree

University Programs (1)

Bachelor of Integrative Studies (1)

- 7605 Integrative Studies

**Bachelor of Science Offered Jointly between the College of Arts and Sciences
and School of Engineering and Computer Science (3)**

5051 Bioengineering

5040 Engineering Chemistry

5060 Engineering Physics

OAKLAND UNIVERSITY

UNDERGRADUATE CONCENTRATIONS AND MINORS

UNDERGRADUATE CONCENTRATIONS (26)

2885	Addiction Studies
1435	American Studies
2850	Archaeology
1160	Endorsement Certification in Integrated Science
1518	Endorsement Certification in Social Studies
1270	Environmental Studies
6240	Exercise Science
1995	French Studies
2016	German Studies
2887	Gerontology
6030	Health Behavioral Sciences
6073	Health Information Technology
6023	Integrative Holistic Medicine
1705	Linguistics
6071	Medical Assistant
6055	Nutrition and Health
6075	Occupational Therapy Assistant
6076	Physical Therapist Assistant
6021	Pre-Health Professional
6022	Pre-Pharmacy
6015	Pre-Physical Therapy
1152	Pre-Medical Studies – Med/Den/Opt/Vet
2856	Religious Studies
6072	Respiratory Therapy
6074	Surgical Technology
2855	Urban Studies

UNDERGRADUATE MINORS (105)

3100	Accounting
2740	Advertising
1605	African-American Studies
2810	Anthropology
1810	Applied Mathematics
4355	Applied Leadership Skills
1835	Applied Statistics
1055	Art History
1105	Biology
1140	Biology – Secondary Teaching
3840	Business
3801	Business Analytics
1230	Chemistry
1240	Chemistry – Secondary Teaching
2889	Child Welfare
1610	Chinese Studies
1956	Chinese Language

1955 Chinese Language and Civilization
1960 Chinese with Secondary Education
2841 Christianity Studies
1450 Cinema Studies
2705 Communication
5020 Computer Science
5021 Computing
2875 Criminal Justice
1420 Creative Writing
2290 Dance
2292 Dance – Secondary Teaching
3700 Economics
3702 Economics – Secondary Teaching
4351 Employment Systems and Standards
1405 English
1430 English – Secondary Teaching
3850 Entrepreneurship
6042 Environmental Health and Safety
1266 Environmental Science
6240 Exercise Science
3200 Finance
1981 French Language
1980 French Language and Literature
1990 French – Secondary Teaching
2011 German Language
2010 German Language and Literature
2016 German Studies
2025 German – Secondary Teaching
1095 Graphic Design
1505 History
1515 History – Secondary Teaching
4320 Human Resource Development
3400 Human Resources Management
2708 Interactive and Social Media
3302 International Management
5300 International Orientation
2510 International Relations
5070 Information Technology
2842 Islamic Studies
2037 Japanese Language
2035 Japanese Language and Civilization
2040 Japanese Language and Literature
2046 Japanese with Secondary Education
2047 Japanese – Secondary Teaching
1615 Japanese Studies
2350 Jazz Studies
2735 Journalism
2843 Judaic Studies
1625 Latin American Studies
4360 Lean Leadership

2864 LGBTQ Studies
1705 Linguistics
3500 Management Information Systems
3600 Marketing
1805 Mathematics
1825 Mathematics – Secondary Teaching
1635 Middle Eastern Studies
2748 Multimedia
2205 Music
2206 Music, Liberal Arts
6055 Nutrition and Health
3806 Operations Management
2375 Philosophy
2405 Physics
2430 Physics – Secondary Teaching
2515 Political Science
2520 Political Science – Secondary Teaching
2605 Psychology
2742 Public Relations
2530 Public Administration and Public Policy
2707 Relational Communication
1631 Russian and East European Studies
2820 Sociology
2822 Sociology – Secondary Teaching
1620 South Asian Studies
2101 Spanish Language
2100 Spanish Language and Literature
2120 Spanish – Secondary Teaching
1070 Studio Art
1720 Teaching English as a Second Language
2294 Theatre
1147 Three Science
4900 Training and Development
1146 Two Science
6050 Wellness, Health Promotion, and Injury Prevention
2865 Women and Gender Studies
2870 Writing and Rhetoric
2355 World Music

GRADUATE DEGREE PROGRAMS (139)

Doctor of Philosophy (14)

PH1900	Applied Mathematical Sciences
PH1115	Biomedical Sciences: Biological Communication
PH1350	Biomedical Sciences: Health and Environmental Chemistry
PH2490	Biomedical Sciences: Medical Physics
PH5030	Computer Science and Informatics
PH4951	Education: Educational Leadership
PH4950	Education: Counseling
PH4952	Education: Early Childhood Education
PH5160	Mechanical Engineering
PH2305	Music Education
PH4940	Reading Education
PH5180	Systems Engineering
PH5540	Electrical and Computer Engineering
PH2605	Psychology

Doctor of Physical Therapy (2)

DP6220
DP6221

Doctor of Science in Physical Therapy (1)

DS6220

Doctor of Nursing Practice (1)

DN7400

Doctor of Medicine (1)

MD9100

Education Specialist (1)

ES4650	Leadership
--------	------------

Master of Arts (8)

MA1105	Biology
MA2710	Communications
MA4400	Counseling
MA1405	English
MA1505	History
MA1705	Linguistics
MA1805	Mathematics
MA4405	Clinical mental Health Counseling

Master of Arts in Liberal Studies (1)

MA1700

Master of Accounting (1)

MA3100

Master of Arts in Teaching (3)

MT4120 Elementary Education
MT4500 Reading and Language Arts
MT4220 Secondary Education

Master of Business Administration (2)

MB3900
MB3901

Master of Education (6)

ME4668 Higher Education Leadership
ME4700 Early Childhood Education
ME4610 Educational Leadership
ME4620 Educational Studies
ME4800 Special Education
ME4615 Teacher Leadership

Master of Music (8)

MM2335 Conducting
MM2345 Instrumental Performance
MM2305 Music Education
MM2320 Piano Pedagogy
MM2325 Piano Performance
MM2310 Vocal Pedagogy
MM2315 Vocal Performance
MM2356 World Percussion Performance

Master of Public Administration (1)

MP2560

Master of Science (19)

MS1835 Applied Statistics
MS1105 Biology
MS1230 Chemistry
MS5020 Computer Science
MS5540 Electrical and Computer Engineering
MS5620 Embedded Systems
MS5560 Engineering Management
MS6240 Exercise Science
MS5185 Industrial and Systems Engineering
MS1860 Industrial Applied Mathematics
MS3550 Information Technology Management
MS5160 Mechanical Engineering
MS5545 Mechatronics
MS2605 Psychology
MS2405 Physics
MS6045 Safety Management
MS5600 Software Engineering and Information Technology

MS5180 Systems Engineering

Master of Science in Nursing (4)

MS7270 Adult Gerontological Nurse Practitioner
MS7280 Family Nurse Practitioner
MS7220 Nurse Anesthesia
MS7290 RN to MSN

Master of Training and Development (1)

MD4900

Master of Public Health(1)

MH6300

Graduate Certificate (34)

GC4551 Advanced Microcomputer Applications
GC4817 Applied Behavior Analysis Basic
GC4816 Applied Behavior Analysis Comprehensive
GC4818 Autism for Multiple Disciplines
GC4820 Autism Spectrum Disorder
GC4819 Autism Spectrum Disorder Advanced
GC1107 Biomedical Sciences
GC6245 Clinical Exercise Science
GC2335 Conducting
GC6246 Corporate and Worksite Wellness
GC4552 Digital Literacies and Learning
GC4822 Emotional Impairment
GC4821 Emotional Impairment Advanced
GC6240 Exercise Science
GC7301 Forensic Nursing
GC4905 Human Diversity Inclusion and Social Justice
GC2345 Instrumental Performance
GC4625 International Education
GC4550 Microcomputer Applications
GC2305 Music Education
GC6233 Neurological Rehabilitation
GC6228 Oncology Rehabilitation
GC6230 Orthopedic Manual Physical Therapy
GC6232 Orthopedics
GC6231 Pediatric Rehabilitation
GC2320 Piano Pedagogy
GC2325 Piano Performance
GC5186 Productivity Improvement
GC4823 Specific Learning Disability
GC4824 Specific learning Disability Advanced
GC1880 Statistical Methods
GC6234 Teaching and Learning for Rehabilitation Professionals
GC1720 Teaching English as Second language

GC2310 Vocal Pedagogy

Post Masters Graduate Certificate (29)

PM3101	Accounting
PM7271	Adult Gerontological Nurse Practitioner
PM4561	Advanced Reading, Language Arts and Literature
PM3706	Business Economics
PM4661	Central Office Administration
PM2335	Conducting
PM2564	Court Administration
PM2569	Criminal Justice Leadership
PM3851	Entrepreneurship
PM7281	Family Nurse Practitioner
PM3201	Finance
PM3301	General Management
PM2566	Health Care Administration
PM4670	Higher Education
PM3401	Human Resources Management
PM2346	Instrumental Performance
PM3306	International Business
PM2568	Local Government Management
PM3501	Management Information Systems
PM3601	Marketing
PM2305	Music Education
PM2567	Nonprofit Organization & Management
PM7221	Nurse Anesthesia
PM2320	Piano Pedagogy
PM2326	Piano Performance
PM3807	Production/Operations Management
PM4560	Reading, Language Arts and Literature
PM2311	Vocal Pedagogy
PM2315	Vocal Performance

III. Staffing and Enrollment

The following tables and graphs are provided:

Figure 1 - Faculty and Staff Full Time Equivalent (FTE) by Program, FY 2015-16
 This chart shows the FTE for faculty, administration and clerical/service for both instructional disciplines and non-instructional program classes.

		FACULTY	STAFF
5	AREA STUDIES	10.31	0.88
9	COMMUNICATION	40.12	0.00
11	COMPUTERS	23.21	6.68
13	EDUCATION	102.74	26.08
14	ENGINEERING	50.39	23.99
16	FOREIGN LANGUAGES	58.25	2.98
23	ENGLISH & LETTERS	89.11	7.63
24	LIBERAL ARTS	7.87	4.60
25	LIBRARY	1.00	0.00
26	BIOLOGY	47.14	16.06
27	MATH	37.55	8.86
30	MULTI/INTERDISCIPLINARY	0.00	0.00
31	PARKS RECREATION & FITNESS	10.04	0.00
38	PHILOSOPHY	25.65	0.85
40	PHYSICAL SCIENCES	32.88	17.29
42	PSYCHOLOGY	29.41	3.30
43	HOMELAND SECURITY	7.79	0.00
44	PUBLIC ADMINISTRATION	12.20	0.00
45	SOCIAL SCIENCES	50.95	10.30
50	VISUAL & PERFORMING ARTS	83.69	25.34
51	HEALTH PROFESSIONS	9.50	0.00
51.12	MEDICINE	38.84	21.42
51.22	PUBLIC HEALTH	8.24	0.00
51.22	REG NURSING	49.10	5.25
51.99	OTHER HEALTH PROFESSIONALS	29.49	7.59
52	BUSINESS	91.50	12.48
54	HISTORY	19.89	2.30
	TOTAL INSTRUCTION	966.86	203.88
	RESEARCH		18.62
	PUBLIC SUPPORT		3.86
	ACADEMIC SUPPORT		393.50
	STUDENT SERVICES		249.74
	INSTITUTIONAL SUPPORT		220.19
	PLANT OPERATION & MAINT		128.03
	AUXILIARY ENTERPRISES		50.69
	TOTAL FTEs	966.86	1268.51

Figure 2 - Student Credit Hours by Level and by Program, FY 2016-17
 This chart shows credit hours awarded by instructional discipline.

CIP		Lower	Upper	Masters	Doctoral	Total
05	Area Studies	3864	1120			4984
09	Communication	8704	9750	236		18690
11	Computer Science	7440	5942	1186	548	15116
13	Education	828	12906	12715	3625	30074
14	Engineering	9917	11507	5339	698	27461
16	Modern Languages	17561	33690	486		21737
23	English	31049	9800	260		41109
24	Liberal Arts	3828	144	98		4070
25	Library Science	196				196
26	Biology	22150	14781	739	79	37749
27	Math	29576	1112	1127	94	31909
30	Multi/Interdisciplin. Sciences					0
31	Parks, Recreation & Fitness	2480	2213	597		5290
38	Philosophy	13312	1496			14808
40	Physical Sciences	32606	1094	435	117	34252
42	Psychology	13704	6560	612	111	20987
43	Criminal Justice	2108	3448			5556
44	Public Administration	524	4910	1198		6632
45	Social Science	20012	10484	297		30793
50	Fine Arts	22234	7945	168	57	30404
51.10	Med Library Sciences	870	2577			3447
51.22	Public Health	584	1963	778		3325
51.23	Rehab & Therapeutic		328	3239	1493	5060
51.38	Nursing	6771	16144	3371	227	26513
51.99	Other Health Professions	5410	11191	36		16637
52	Business	12727	39214	7543		59484
54	History	5308	2416	140		7864
Total		273,763	182,735	40,600	7,049	504,147

Figure 3 - Degrees Awarded by Program, FY 2016-17
 This chart shows the degrees awarded by program.

CIP		Bachelor's	Post	Master's	Post	Doctoral	Total
			Bachelor's		Master's		
03	Environmental Sciences	29	0	0	0	0	29
05	Area Studies	8	0	0	0	0	8
09	Communication	220	0	8	0	0	228
11	Computer Science	110	0	53	0	1	164
13	Education	165	20	245	55	14	499
14	Engineering	251	0	130	0	10	391
15	Engineering Management	0	0	22	0	0	22
16	Modern Languages	41	0	6	0	0	47
22	Legal Studies (CRJ-Courts)	23	0	0	0	0	23
23	English	93	0	4	0	0	97
24	Liberal Arts	112	0	0	0	0	112
26	Biology	215	2	6	0	7	230
27	Math	17	0	4	0	7	28
31	Parks, Recreation & Fitness	0	0	27	0	0	27
38	Philosophy	4	0	0	0	0	4
40	Physical Sciences	18	0	10	0	1	29
42	Psychology	207	0	9	0	3	219
43	Criminal Justice (Non- Court)	74	0	0	0	0	74
44	Public Administration	121	1	33	0	0	155
45	Social Science	131	0	0	0	0	131
50	Fine Arts	139	1	3	0	0	143
51.16	Nursing	392	1	57	0	8	458
51.22	Public Health	16	0	15	0	0	31
51.99	Other Health Professions	386	10	12	0	126	534
52	Business	594	10	164	0	0	768
54	History	38	0	0	0	0	38
Total	Total	3,404	45	808	55	177	4,489

Figure 4 - Enrollment Trends from Fall 1998 to Fall 2017

This graphic shows the growth over the last eighteen years in undergraduate and graduate resident students and undergraduate and graduate non-resident students. During this period Oakland University's enrollment increased from 14,289 to 19,333, an increase of over 35%.

Fall Term	Undergraduate			Graduate			Total		
	In-State	Out of State	Total	In-State	Out of State	Total	In-State	Out of State	Total
1998	10,963	148	11,111	3,061	117	3,178	14,024	265	14,289
1999	11,153	179	11,332	2,878	77	2,955	14,031	256	14,287
2000	11,530	200	11,730	3,061	99	3,160	14,591	299	14,890
2001	12,034	215	12,249	3,145	104	3,249	15,179	319	15,498
2002	12,185	208	12,393	3,232	115	3,347	15,417	323	15,740
2003	12,504	223	12,727	3,428	101	3,529	15,932	324	16,256
2004	12,614	211	12,825	3,568	113	3,681	16,182	324	16,506
2005	12,923	212	13,135	3,672	100	3,772	16,595	312	16,907
2006	13,163	210	13,373	3,839	97	3,936	17,002	307	17,309
2007	13,549	182	13,731	3,753	107	3,860	17,302	289	17,591
2008	13,948	158	14,106	3,528	124	3,652	17,476	282	17,758
2009	14,680	181	14,861	3,401	117	3,518	18,081	398	18,379
2010	14,961	189	15,150	3,293	121	3,414	18,254	310	18,564
2011	15,275	198	15,473	3,301	126	3,427	18,576	324	18,900
2012	15,587	229	15,816	3,293	157	3,450	18,880	386	19,266
2013	15,967	305	16,272	3,236	252	3,488	19,203	557	19,760
2014	16,166	343	16,509	3,149	346	3,495	19,315	689	20,004
2015	16,379	414	16,793	3,036	432	3,468	19,415	846	20,261
2016	16,139	429	16,568	2,933	511	3,444	19,072	940	20,012
2017	15,470	431	15,901	2,895	537	3,432	18,365	968	19,333

* changed to no ghost 1999-2016

Figure 5 – Enrollment Projections by School/College and Level, Fall 2016 – Fall 2020
 Oakland University continues to experience increases in enrollments.

Enrollment Projections by School/College and Level							
Fall 2016 - Fall 2020							
	Actual	Projections					% Change
Undergraduate	2015	2016	2017	2018	2019	2020	2015 - 2020
CAS	6,310	6,272	6,310	6,348	6,418	6,488	2.8%
SBA	2,561	2,607	2,623	2,657	2,686	2,715	6.0%
SEHS	1,137	1,129	1,135	1,148	1,161	1,173	3.2%
SECS	2,163	2,254	2,267	2,295	2,320	2,345	8.4%
SHS	2,214	2,230	2,243	2,261	2,286	2,311	4.4%
SON	1,527	1,527	1,536	1,540	1,557	1,574	3.1%
UP/None	1,249	1,244	1,252	1,257	1,270	1,284	2.8%
Total	17,161	17,262	17,366	17,505	17,697	17,892	4.3%
Graduate	2015	2016	2017	2018	2019	2020	
CAS	393	391	397	405	409	417	6.1%
SBA	478	474	484	491	500	507	6.1%
SEHS	1,171	1,139	1,150	1,163	1,183	1,205	2.9%
SECS	634	636	649	660	671	681	7.4%
SHS	258	254	258	263	268	271	5.2%
SON	224	224	229	233	236	240	7.0%
Medical School	392	443	468	491	490	490	25%
Total	3,550	3,560	3,634	3,707	3,757	3,811	7.4%
W/O SOM	3,158	3,117	3,166	3,216	3,267	3,321	5.2%
Total	2015	2016	2017	2018	2019	2020	
CAS	6,703	6,664	6,708	6,753	6,826	6,805	3.0%
SBA	3,039	3,081	3,106	3,147	3,186	3,223	6.0%
SEHS	2,308	2,267	2,285	2,311	2,344	2,378	3.1%
SECS	2,797	2,890	2,916	2,955	2,991	3,026	8.2%
SHS	2,472	2,483	2,501	2,524	2,554	2,583	4.5%
SON	1,751	1,751	1,764	1,774	1,794	1,814	3.6%
Medical School	392	443	468	491	490	490	25%
University Programs	1,249	1,244	1,252	1,257	1,270	1,284	2.8%
Total	20,711	20,822	21,000	21,212	21,454	21,703	4.8%
		0.5%	0.9%	1.0%	1.1%	1.2%	

Figure 6 – General Fund Square Feet per Student in Michigan, FY 2015-2016
This chart shows that Oakland University is last in general fund square footage per student of the 15 Michigan institutions. Source: Heidi Data Base

Rank by SQ FT	
UNIV	SQFT/FYES
LSSU	413.27
UMA	392.02
WSU	314.95
MSU	311.68
MTU	310.19
WMU	293.70
NMU	267.03
UM-D	231.58
UM-F	227.63
SVSU	201.54
EMU	189.84
CMU	185.89
FSU	146.87
GVSU	144.78
OU	135.58

Future Staffing Needs

Currently, Oakland University employs 5,032 full- and part-time faculty and staff, as well as 4,470 students and graduate assistants. In addition, there are over 100 employees of contract service providers for food service, bookstore and custodial services. Faculty and staff will grow with increased enrollment.

Average Class Size

Average class size for undergraduate instruction in fall 2016 was 31.51 students. Graduate class size in fall 2015 was 17.56 and Ph.D. classes averaged 14.33 students. It is important to the institutional character that the size of classes remains small. However, larger classes have been a cost-effective way to absorb growth.

IV. Facility Assessment

Utilization Rates

Oakland University has the lowest building square footage per student (figure 6) of any of the 15 public universities. A comparison of its enrollment, programmatic mix, doctoral programs and the relatively large number of engineering and science programs suggests that the University's space should be closer to the overall average space of the 15 public universities. Program by program comparisons to national norms for disciplines indicates that all programs fall short in space. Classroom utilization is high, especially in the evenings due to Oakland's enrollment, which includes a large number of non-traditional students. Demand for evening classes exceeds available facilities.

Mandated Standards

Mandated standards for animal research are met.

Functionality

The limited amount of specialized program space affects overall space functionality. This is particularly evident in the most impacted areas of Nursing, Health Sciences, and the Performing Arts. Recent facility additions for the sciences, nursing, business and education provide good space for programmatic needs. Most academic programs on the Oakland University campus are offered in the following buildings:

- North Foundation Hall – Completed in 1959, and is primarily a student services building, but also includes one classroom. The building is receiving a general facelift and significant improvements to the air distribution system.
- South Foundation Hall - Completed in 1959, this building is primarily a classroom building. As one of the oldest buildings on campus, South Foundation Hall houses the core classrooms for incoming students. Since the building was constructed, emphasis has been placed upon the institution's function rather than form, making academics and growth the main focus of the building, which has remained predominantly classroom-based. To continue to enhance the University's student success initiative, renovation of South Foundation Hall is OU's top priority and the

proposed 2019 renovations will not only incorporate new state-of-the-art classrooms, but a collaborative environment that integrates an innovative learning space. This will gradually build a sense of timelessness that links generations of the campus community and is associated with the campus' quality and highly valued physical environment.

- Hannah Hall of Science - Completed in 1961, houses science, health science, and engineering laboratories as well as classrooms and offices. Air conditioning was added as part of a major energy project undertaken several years ago. Portions of the building were renovated to accommodate health sciences as part of the State funded Science and Engineering Building.
- Kresge Library – Completed in 1961 with additions in 1989. This is the central library for the institution.
- Wilson Hall - Completed in 1967, houses the departments of Art and Art History, and Communications and Journalism. It also houses Meadow Brook Theatre and administrative offices.
- Dodge Hall of Engineering - Completed in 1969, houses engineering and biology laboratories, offices, and classrooms. It also provides space for the Eye Research Institute and the administrative/academic computing center.
- Varner Hall - Completed in 1970, houses the departments of Music, Theatre and Dance (MTD), History, Political Science, and Sociology/Anthropology. The facilities for MTD are inadequate to meet the needs of their growing programs.
- O'Dowd Hall - Completed in 1982, this building houses the Graduate Office, the Registrar, the Departments of English, Writing and Rhetoric, Modern Languages and Literatures, Linguistics, Philosophy, and a number of general purpose classrooms. O'Dowd Hall is the home of the School of Medicine.
- Elliott Hall - Completed in 2000, houses the School of Business Administration and Information Technology.
- Pawley Hall - Completed in 2002, houses the School of Education and Human Services, as well as the Lowry Child Development Center.
- Human Health Building – Completed in Fall, 2012, this 172,825 square foot building houses the School of Health Sciences and the School of Nursing. Collectively, this new enterprise is part of Oakland University's vision of better preparing today's health care students by creating an innovative partnership in one structure. With this new building, growth in undergraduate and graduate enrollment can be significantly increased in response to vital shortages in nursing and heavy demand for health science professionals.
- Engineering Center (EC) - Completed in Fall, 2014, this building is designed to provide high quality twenty first century instructional and research facilities for all engineering and computer science programs that are vital to the revival of the economy of Southeast Michigan as well as the State of Michigan in general. This

includes supporting the global competitiveness of the US alternative energy, health care and bio-medical, automotive, defense, and other high-tech industries. The EC added 128,000 square feet for the School of Engineering and Computer Science (SECS), as well as 13,500 square feet of assignable general purpose classroom space to support the growth of the overall student population.

Although academic programs are offered in other facilities and there are a number of other service buildings and auxiliary buildings, the above are the major academic facilities. The average age of buildings on the main campus is 30 years old. In general, buildings are in fair condition. Oakland University maintains a comprehensive list of plant renewal and deferred plant renewal projects, which is updated annually.

Replacement Value of Facilities

The replacement value of Oakland University's 3.78 million square feet, including Meadow Brook Hall is estimated at \$1.1 billion.

Utility Systems Condition

The utility systems in facilities (i.e., heating, ventilation, air conditioning (HVAC), water, sewage, gas and electrical) are in varying degrees of condition, depending on facility age. All are fully functional, with those in the 30- to 40-year age and beyond group needing upgrades to increase efficiency and effectiveness of operation. The storm water system for some of the facilities flooded due to unusual 100-year storms and need attention in coming years. The existing water/sewage infrastructure is adequate to serve the projected programming needs for the next 10 years. An upgrade to the electrical substation was completed in 2003, which included cabling, switchgear, and a new substation. This upgrade will meet projected electrical needs for at least 15 years however capacity of the cabling needs to be evaluated as the campus grows in the future. Additional upgrades to infrastructure throughout campus will be required as campus facilities age and enrollment grows.

Many of the older facilities lack fire suppression systems and would be in consideration to update the facilities per current Codes during major renovation projects.

Due to the age of OU's infrastructure replacement/upgrade is needed for the underground HTHW lines. A new HTHW line needs to be installed to complete the south loop from the new Engineering Center to Varner Hall, IT closets, IT cabling with Voice over IP capabilities, and the infrastructure (HVAC, plumbing and electrical) in the academic buildings (Dodge Hall of Engineering, South Foundation Hall, Hannah Hall of Science, Varner Hall) as well as residence halls (Hamlin Hall and Vandenberg Hall).

Facility Infrastructure Condition

The pavement/sidewalks/structural infrastructure is generally in fair condition. Funds are allocated annually to pavement/sidewalk repair to restore the most deteriorated portions.

Major campus projects included in the next 5-year plan the replacement of old air-handling units, HTHW system upgrade, storm water management, and an upgraded VOIP communication network. A service contract has been in place to maintain new micro-turbines in the new Engineering Center and to maintain the new cogeneration plant in CHP. Oakland budgets \$3.8 million for non-routine maintenance in its current fiscal year from the general fund, endowment distribution, and auxiliary operation reserves.

Land

Oakland University's campus includes 1,443 acres. The main campus is approximately 350 acres. The remaining campus includes several major developments (a faculty/staff subdivision, the National Register Meadow Brook Estate, two golf courses), a large amount of wetland, and significant undeveloped acreage. The Campus Master Plan, approved by the Board of Trustees in June 2016, has identified future uses for much of the undeveloped property.

Buildings Obligated to the State Building Authority

The following buildings/portions of buildings are bonded through State bonds:

- Science and Engineering Building – lease expiration in 2034
- Elliott Hall – lease expiration in 2040
- Pawley Hall – lease expiration in 2042
- Engineering Center – lease expiration in 2042
- Human Health Building – lease expiration in 2047

The following facilities are bonded through the University:

- Golf course - final payment in 2026
- Recreation and Athletic Center - final payment in 2026
- Student Apartments – final payment in 2031
- Electrical Power Upgrade – final payment in 2031
- Parking Structure – final payment in 2031
- Oakland Center Expansion – final payment in 2031
- Human Health Building – final payment in 2039
- Engineering Center – final payment in 2042
- Oak View Hall – final payment in 2043
- Extension of Library Drive – final payment in 2043
- Facilities Management Building – final payment in 2043
- Southern Student Housing - final payment in 2047
- Oakland Center Expansion - final payment in 2047
- Anibal/Fitzgerald Hall Renovation - final payment in 2047

Oakland University Classroom Utilization Reports Fall 2013 and Winter 2014

106 Classrooms

Definitions

ASF = Assignable Square Feet

Capacity= Number of seats or stations in room

WRH = Number of Hours per Week Room was scheduled

WRH% = WRH / Available Hour per Week

Station Occupancy = % of seats used when room was in use.

Report 1 – Fall 2013

- All Day Utilization 8 am to 10 pm
- 75 Available Hours per Week

Building	Room	ASF	Capacity	WRH	WRH%	Station Occupancy
DHE	200	812	95	56.0	74.7%	67.9%
DHE	201	3,596	314	36.5	48.7%	55.4%
DHE	202	648	52	33.3	44.5%	43.7%
DHE	203	918	70	36.1	48.1%	75.0%
DHE	204	638	30	31.7	42.3%	54.5%
DHE	236	380	30	40.0	53.3%	58.7%
DHE	237	380	30	38.9	51.9%	58.3%
EH	204	570	30	37.9	50.5%	68.2%
EH	206	570	30	46.6	62.2%	63.5%
EH	208	720	40	45.4	60.6%	71.5%
EH	210	720	45	40.0	53.4%	71.2%
EH	212	720	40	53.8	71.8%	57.8%
EH	214	837	48	46.6	62.1%	75.5%
EH	235	1,054	40	37.2	49.6%	62.1%
EH	237	1,054	40	50.8	67.7%	54.2%
EH	239	1,054	40	47.6	63.5%	59.9%
HHB	1005	1,828	80	44.1	58.8%	50.7%
HHB	1006	1,563	50	41.3	55.1%	36.8%
HHB	1031	729	30	41.8	55.8%	44.6%
HHB	1050	4,384	200	40.2	53.6%	69.3%
HHB	2023	1,442	50	42.3	56.4%	42.2%
HHB	2085	1,213	55	48.6	64.9%	40.7%
HHB	2086	1,307	60	41.7	55.5%	47.3%
HHB	4043	1,938	80	34.0	45.4%	49.1%
HHB	4050	2,695	112	32.0	42.7%	61.5%
HHB	5036	1,208	50	41.2	54.9%	57.7%
HHB	5037	1,967	80	51.9	69.2%	59.6%
HHB	5045	2,730	112	49.0	65.3%	65.6%
HHS	190	2,024	187	44.0	58.7%	57.2%
HHS	195	2,254	187	44.2	58.9%	69.6%
HHS	220	550	40	41.8	55.7%	65.3%
HHS	225	414	30	33.3	44.5%	67.9%
NFH	156	1,980	144	49.4	65.8%	72.5%
ODH	202A	1,344	83	36.0	48.0%	72.2%
ODH	202B	1,848	111	37.7	50.2%	68.8%
ODH	202C	1,394	83	39.0	52.0%	53.6%
PH	302	1,711	72	44.6	59.5%	65.9%
PH	306	957	48	46.4	61.9%	61.5%
PH	307	925	49	42.7	56.9%	54.3%
PH	308	928	48	42.6	56.9%	59.7%
PH	309	925	49	43.5	58.1%	60.9%
PH	310	754	36	48.0	64.0%	58.1%
PH	312	725	36	49.3	65.8%	40.7%
PH	314	1,248	48	41.7	55.6%	50.9%
PH	316	957	48	50.2	66.9%	52.8%

Building	Room	ASF	Capacity	WRH	WRH%	Station Occupancy
PH	318	928	48	42.2	56.3%	49.8%
PH	320	754	36	52.8	70.5%	55.3%
SEB	93	570	35	37.4	49.8%	64.2%
SEB	130	630	42	52.0	69.3%	57.1%
SEB	164	1,134	70	56.0	74.7%	65.6%
SEB	168	1,107	70	52.0	69.3%	68.4%
SEB	172	1,134	70	52.0	69.3%	60.3%
SEB	185	840	50	54.0	72.0%	56.7%
SEB	187	540	36	48.0	64.0%	76.4%
SEB	364	400	26	40.4	53.9%	60.4%
SEB	372	960	50	14.3	19.1%	32.2%
SEB	376	600	28	46.7	62.2%	43.8%
SEB	378	600	30	48.0	64.0%	38.6%
SEB	384	660	44	43.2	57.5%	58.2%
SEB	386	600	40	52.0	69.3%	58.1%
SEB	388	600	30	52.9	70.6%	49.2%
SFH	163	816	63	33.7	44.9%	74.2%
SFH	164	644	48	56.3	75.0%	45.5%
SFH	165	945	63	27.1	36.1%	74.1%
SFH	166	644	48	45.7	60.9%	48.5%
SFH	167	644	48	45.7	60.9%	45.4%
SFH	168	644	48	48.8	65.0%	49.1%
SFH	169	644	40	50.8	67.7%	49.3%
SFH	170	644	48	40.9	54.5%	61.2%
SFH	171	644	30	42.7	56.9%	59.8%
SFH	172	644	48	51.0	68.1%	44.0%
SFH	173	644	48	51.0	68.1%	48.0%
SFH	174	644	48	50.1	66.9%	51.9%
SFH	176	702	48	44.4	59.2%	49.1%
SFH	263	980	65	42.7	56.9%	79.9%
SFH	265	420	25	37.8	50.4%	40.2%
SFH	266	644	48	53.9	71.8%	55.1%
SFH	268	644	48	51.5	68.7%	47.3%
SFH	269	644	48	42.2	56.3%	51.6%
SFH	270	644	48	52.6	70.2%	44.6%
SFH	271	644	48	42.9	57.2%	53.6%
SFH	272	644	48	46.7	62.2%	50.8%
SFH	273	644	48	46.2	61.6%	49.5%
SFH	274	644	48	49.5	66.1%	47.4%
SFH	276	728	48	48.4	64.5%	49.0%
SFH	363	980	70	46.1	61.5%	68.8%
SFH	364	644	48	44.6	59.5%	65.8%
SFH	365	980	75	48.0	64.0%	77.3%
SFH	366	644	48	42.0	56.0%	51.4%
SFH	367	644	48	38.9	51.8%	50.8%
SFH	368	644	48	48.4	64.5%	54.0%
SFH	369	644	48	46.6	62.1%	45.4%
SFH	370	644	48	39.4	52.6%	39.9%
SFH	371	644	48	41.3	55.1%	49.8%
SFH	372	644	48	42.5	56.7%	54.1%
SFH	373	644	48	34.2	45.5%	36.7%
SFH	374	644	48	36.7	48.9%	60.9%
SFH	376	728	48	44.5	59.3%	36.8%
VAR	205	1,064	85	55.9	74.6%	67.6%
VAR	206	1,102	85	50.2	66.9%	68.5%
VAR	479	966	30	42.7	56.9%	72.6%
WH	102	810	60	39.5	52.7%	69.0%
WH	105	783	60	42.7	56.9%	57.2%
WH	124	529	85	40.0	53.3%	66.6%
WH	301	300	16	33.8	45.0%	56.1%
WH	313	480	30	42.9	57.2%	57.5%

Building	Room	ASF	Capacity	WRH	WRH%	Station Occupancy
Totals	106	102,015	6,211	4,668.5		
Averages		962	59	44.0	58.7%	58.3%

Report 2 - Fall 2013

- Daytime Utilization 8 am to 5 pm
- 45 Available Hours per Week

Building	Room	ASF	Capacity	WRH	WRH%	Station Occupancy
DHE	200	812	95	38.0	84.4%	73.5%
DHE	201	3,596	314	31.5	70.0%	60.0%
DHE	202	648	52	25.3	56.3%	47.1%
DHE	203	918	70	19.0	42.2%	65.7%
DHE	204	638	30	21.0	46.7%	67.0%
DHE	236	380	30	28.0	62.2%	75.7%
DHE	237	380	30	24.9	55.4%	69.4%
EH	204	570	30	23.7	52.6%	70.7%
EH	206	570	30	35.0	77.8%	66.9%
EH	208	720	40	32.3	71.7%	75.8%
EH	210	720	45	27.8	61.9%	81.0%
EH	212	720	40	41.1	91.4%	60.9%
EH	214	837	48	33.9	75.2%	80.0%
EH	235	1,054	40	21.8	48.4%	62.4%
EH	237	1,054	40	34.3	76.3%	52.8%
EH	239	1,054	40	33.9	75.4%	65.8%
HHB	1005	1,828	80	32.4	72.1%	49.2%
HHB	1006	1,563	50	29.2	64.8%	27.0%
HHB	1031	729	30	35.0	77.9%	47.5%
HHB	1050	4,384	200	35.7	79.3%	69.6%
HHB	2023	1,442	50	31.0	68.9%	37.6%
HHB	2085	1,213	55	35.0	77.8%	32.1%
HHB	2086	1,307	60	30.7	68.2%	46.7%
HHB	4043	1,938	80	20.3	45.1%	61.8%
HHB	4050	2,695	112	22.0	48.9%	67.0%
HHB	5036	1,208	50	29.0	64.5%	64.4%
HHB	5037	1,967	80	37.5	83.4%	63.6%
HHB	5045	2,730	112	38.4	85.4%	67.8%
HHS	190	2,024	187	36.0	80.0%	59.2%
HHS	195	2,254	187	40.1	89.2%	73.3%
HHS	220	550	40	27.0	60.0%	80.4%
HHS	225	414	30	23.3	51.9%	70.2%
NFH	156	1,980	144	40.3	89.6%	77.5%
ODH	202A	1,344	83	29.5	65.5%	71.5%
ODH	202B	1,848	111	33.1	73.6%	70.6%
ODH	202C	1,394	83	27.0	60.0%	61.9%
PH	302	1,711	72	30.9	68.7%	72.4%
PH	306	957	48	32.2	71.6%	66.2%
PH	307	925	49	31.0	68.9%	59.1%
PH	308	928	48	32.0	71.1%	64.6%
PH	309	925	49	30.3	67.4%	75.2%
PH	310	754	36	33.8	75.0%	50.1%
PH	312	725	36	37.7	83.7%	45.0%
PH	314	1,248	48	27.0	60.0%	55.5%
PH	316	957	48	35.0	77.8%	57.6%
PH	318	928	48	28.0	62.2%	64.0%
PH	320	754	36	37.1	82.4%	55.6%
SEB	93	570	35	22.0	48.9%	69.0%
SEB	130	630	42	36.0	80.0%	73.0%
SEB	164	1,134	70	40.0	88.9%	68.6%
SEB	168	1,107	70	38.0	84.4%	66.2%
SEB	172	1,134	70	35.0	77.8%	70.2%

Building	Room	ASF	Capacity	WRH	WRH%	Station Occupancy
SEB	185	840	50	36.5	81.1%	67.8%
SEB	187	540	36	35.0	77.8%	89.1%
SEB	364	400	26	24.7	54.8%	65.2%
SEB	372	960	50	2.3	5.2%	12.7%
SEB	376	600	28	29.7	65.9%	51.8%
SEB	378	600	30	30.0	66.7%	40.9%
SEB	384	660	44	29.2	64.8%	67.9%
SEB	386	600	40	34.0	75.6%	66.1%
SEB	388	600	30	36.7	81.5%	52.0%
SFH	163	816	63	19.0	42.2%	83.3%
SFH	164	644	48	39.7	88.2%	51.7%
SFH	165	945	63	19.0	42.2%	70.0%
SFH	166	644	48	30.0	66.7%	48.7%
SFH	167	644	48	30.0	66.7%	46.8%
SFH	168	644	48	34.0	75.6%	54.5%
SFH	169	644	40	36.0	80.0%	48.0%
SFH	170	644	48	27.7	61.5%	64.5%
SFH	171	644	30	32.0	71.1%	59.3%
SFH	172	644	48	35.3	78.5%	43.8%
SFH	173	644	48	39.0	86.7%	51.8%
SFH	174	644	48	40.0	88.9%	49.4%
SFH	176	702	48	30.7	68.2%	46.8%
SFH	263	980	65	34.6	76.9%	80.8%
SFH	265	420	25	30.7	68.2%	39.8%
SFH	266	644	48	40.0	88.9%	57.3%
SFH	268	644	48	37.3	83.0%	45.1%
SFH	269	644	48	28.0	62.2%	52.7%
SFH	270	644	48	36.5	81.2%	47.9%
SFH	271	644	48	31.3	69.5%	53.9%
SFH	272	644	48	36.0	80.0%	57.2%
SFH	273	644	48	32.0	71.1%	50.3%
SFH	274	644	48	40.0	88.9%	49.8%
SFH	276	728	48	33.7	74.8%	44.0%
SFH	363	980	70	36.0	80.0%	72.9%
SFH	364	644	48	30.9	68.7%	66.4%
SFH	365	980	75	31.0	68.9%	77.8%
SFH	366	644	48	34.9	77.5%	48.5%
SFH	367	644	48	28.2	62.7%	49.3%
SFH	368	644	48	34.7	77.0%	53.0%
SFH	369	644	48	36.0	80.0%	46.3%
SFH	370	644	48	26.2	58.3%	43.4%
SFH	371	644	48	30.7	68.2%	50.6%
SFH	372	644	48	29.3	65.2%	60.3%
SFH	373	644	48	24.0	53.4%	36.5%
SFH	374	644	48	29.5	65.7%	61.3%
SFH	376	728	48	29.4	65.2%	37.2%
VAR	205	1,064	85	39.0	86.7%	70.5%
VAR	206	1,102	85	34.0	75.6%	70.2%
VAR	479	966	30	32.0	71.1%	70.5%
WH	102	810	60	31.0	68.9%	69.7%
WH	105	783	60	32.0	71.1%	58.5%
WH	124	529	85	31.0	68.9%	81.1%
WH	301	300	16	20.7	45.9%	56.6%
WH	313	480	30	32.2	71.6%	58.5%
Totals	106	102,015	6,211	3,333.6		
Averages		962	59	31.4	69.9%	63.3%

Report 3 – Fall 2013

- Prime Time Utilization 10 am to 3 pm
- 25 Available Hours per Week

Building	Room	ASF	Capacity	WRH	WRH%	Station Occupancy
DHE	200	812	95	22.0	88.0%	64.3%
DHE	201	3,596	314	14.0	56.0%	65.7%
DHE	202	648	52	17.7	70.7%	51.9%
DHE	203	918	70	10.3	41.4%	66.2%
DHE	204	638	30	14.7	58.7%	68.2%
DHE	236	380	30	23.0	92.0%	72.2%
DHE	237	380	30	16.9	67.7%	65.6%
EH	204	570	30	12.7	50.7%	77.5%
EH	206	570	30	22.0	88.0%	71.5%
EH	208	720	40	20.3	81.4%	74.1%
EH	210	720	45	15.3	61.1%	79.5%
EH	212	720	40	24.3	97.0%	58.5%
EH	214	837	48	20.9	83.7%	79.1%
EH	235	1,054	40	11.9	47.4%	65.7%
EH	237	1,054	40	21.3	85.3%	47.0%
EH	239	1,054	40	16.9	67.7%	80.7%
HHB	1005	1,828	80	17.4	69.8%	41.3%
HHB	1006	1,563	50	21.1	84.6%	26.9%
HHB	1031	729	30	22.0	88.0%	50.0%
HHB	1050	4,384	200	18.7	74.7%	72.4%
HHB	2023	1,442	50	14.0	56.0%	38.0%
HHB	2085	1,213	55	22.0	88.0%	32.2%
HHB	2086	1,307	60	21.7	86.7%	43.1%
HHB	4043	1,938	80	10.2	40.7%	68.2%
HHB	4050	2,695	112	15.3	61.3%	67.9%
HHB	5036	1,208	50	15.9	63.5%	64.3%
HHB	5037	1,967	80	21.9	87.7%	67.1%
HHB	5045	2,730	112	23.5	94.0%	65.2%
HHS	190	2,024	187	19.0	76.0%	51.0%
HHS	195	2,254	187	23.1	92.5%	63.1%
HHS	220	550	40	16.0	64.0%	81.9%
HHS	225	414	30	16.0	64.0%	67.2%
NFH	156	1,980	144	22.7	90.6%	73.0%
ODH	202A	1,344	83	18.0	72.0%	75.9%
ODH	202B	1,848	111	20.1	80.4%	69.1%
ODH	202C	1,394	83	17.0	68.0%	52.7%
PH	302	1,711	72	17.9	71.7%	72.0%
PH	306	957	48	23.0	92.0%	71.4%
PH	307	925	49	22.0	88.0%	62.5%
PH	308	928	48	23.0	92.0%	65.9%
PH	309	925	49	21.3	85.3%	80.1%
PH	310	754	36	19.8	79.1%	52.7%
PH	312	725	36	21.3	85.3%	47.7%
PH	314	1,248	48	22.0	88.0%	58.5%
PH	316	957	48	22.0	88.0%	58.9%
PH	318	928	48	22.7	90.7%	69.3%
PH	320	754	36	21.3	85.4%	59.9%
SEB	93	570	35	15.3	61.3%	81.6%
SEB	130	630	42	23.0	92.0%	86.5%
SEB	164	1,134	70	23.0	92.0%	61.4%
SEB	168	1,107	70	22.0	88.0%	70.5%
SEB	172	1,134	70	22.0	88.0%	71.9%
SEB	185	840	50	22.0	88.0%	75.3%
SEB	187	540	36	19.0	76.0%	94.2%
SEB	364	400	26	17.3	69.4%	69.2%
SEB	372	960	50	2.3	9.3%	12.7%
SEB	376	600	28	18.7	74.7%	49.0%
SEB	378	600	30	18.0	72.0%	37.4%
SEB	384	660	44	21.2	84.6%	71.8%
SEB	386	600	40	22.0	88.0%	60.2%
SEB	388	600	30	20.7	82.7%	54.2%

Building	Room	ASF	Capacity	WRH	WRH%	Station Occupancy
SFH	163	816	63	10.0	40.0%	85.4%
SFH	164	644	48	22.0	88.0%	55.6%
SFH	165	945	63	14.0	56.0%	68.0%
SFH	166	644	48	18.0	72.0%	51.1%
SFH	167	644	48	18.0	72.0%	42.6%
SFH	168	644	48	21.0	84.0%	49.3%
SFH	169	644	40	19.7	78.7%	46.6%
SFH	170	644	48	20.7	82.7%	63.5%
SFH	171	644	30	21.3	85.4%	57.2%
SFH	172	644	48	20.3	81.4%	44.4%
SFH	173	644	48	22.0	88.0%	60.2%
SFH	174	644	48	23.0	92.0%	48.7%
SFH	176	702	48	21.7	86.7%	45.6%
SFH	263	980	65	21.6	86.4%	83.1%
SFH	265	420	25	19.0	76.0%	38.1%
SFH	266	644	48	23.0	92.0%	61.0%
SFH	268	644	48	22.3	89.3%	48.7%
SFH	269	644	48	20.0	80.0%	52.9%
SFH	270	644	48	19.5	78.2%	44.8%
SFH	271	644	48	19.3	77.4%	45.1%
SFH	272	644	48	23.0	92.0%	61.3%
SFH	273	644	48	23.0	92.0%	53.4%
SFH	274	644	48	23.0	92.0%	54.7%
SFH	276	728	48	21.3	85.3%	45.4%
SFH	363	980	70	21.0	84.0%	72.3%
SFH	364	644	48	21.9	87.7%	67.7%
SFH	365	980	75	18.0	72.0%	79.4%
SFH	366	644	48	21.7	86.6%	49.7%
SFH	367	644	48	18.7	74.7%	53.1%
SFH	368	644	48	21.9	87.5%	55.6%
SFH	369	644	48	22.0	88.0%	39.6%
SFH	370	644	48	18.9	75.6%	40.7%
SFH	371	644	48	17.3	69.4%	52.9%
SFH	372	644	48	15.3	61.4%	59.7%
SFH	373	644	48	18.0	72.0%	37.5%
SFH	374	644	48	22.0	88.0%	63.4%
SFH	376	728	48	17.3	69.4%	33.5%
VAR	205	1,064	85	22.0	88.0%	78.6%
VAR	206	1,102	85	22.0	88.0%	65.5%
VAR	479	966	30	20.0	80.0%	78.9%
WH	102	810	60	22.0	88.0%	74.2%
WH	105	783	60	23.0	92.0%	62.2%
WH	124	529	85	22.0	88.0%	84.9%
WH	301	300	16	10.7	42.7%	78.1%
WH	313	480	30	20.7	82.7%	59.1%
Totals	106	102,015	6,211	2,066.0		
Averages		962	59	19.5	78.0%	61.8%

Report 4 – Fall 2013

- Off Peak Utilization 8 am to 10 am and 3 pm to 5 pm
- 20 Available Hours per Week

Building	Room	ASF	Capacity	WRH	WRH%	Station Occupancy
DHE	200	812	95	16.0	80.0%	86.3%
DHE	201	3,596	314	17.5	87.6%	55.4%
DHE	202	648	52	7.7	38.4%	36.1%
DHE	203	918	70	8.7	43.4%	65.1%
DHE	204	638	30	6.3	31.7%	64.4%
DHE	236	380	30	5.0	25.0%	92.0%
DHE	237	380	30	8.0	40.0%	77.5%
EH	204	570	30	11.0	55.0%	62.7%
EH	206	570	30	13.0	65.0%	59.0%
EH	208	720	40	11.9	59.5%	78.8%
EH	210	720	45	12.6	62.8%	83.0%
EH	212	720	40	16.9	84.3%	64.4%
EH	214	837	48	12.9	64.7%	81.4%
EH	235	1,054	40	9.9	49.7%	58.5%
EH	237	1,054	40	13.0	65.1%	62.3%
EH	239	1,054	40	17.0	85.0%	51.0%
HHB	1005	1,828	80	15.0	75.0%	58.5%
HHB	1006	1,563	50	8.0	40.1%	27.4%
HHB	1031	729	30	13.0	65.2%	43.2%
HHB	1050	4,384	200	17.0	85.0%	66.6%
HHB	2023	1,442	50	17.0	85.0%	37.2%
HHB	2085	1,213	55	13.0	65.0%	31.9%
HHB	2086	1,307	60	9.0	45.0%	55.4%
HHB	4043	1,938	80	10.1	50.6%	55.3%
HHB	4050	2,695	112	6.7	33.4%	64.9%
HHB	5036	1,208	50	13.2	65.8%	64.5%
HHB	5037	1,967	80	15.6	78.0%	58.7%
HHB	5045	2,730	112	14.9	74.7%	71.9%
HHS	190	2,024	187	17.0	85.0%	68.3%
HHS	195	2,254	187	17.0	85.0%	87.0%
HHS	220	550	40	11.0	55.0%	78.2%
HHS	225	414	30	7.3	36.7%	76.8%
NFH	156	1,980	144	17.7	88.4%	83.2%
ODH	202A	1,344	83	11.5	57.4%	64.7%
ODH	202B	1,848	111	13.0	65.0%	73.0%
ODH	202C	1,394	83	10.0	50.0%	77.6%
PH	302	1,711	72	13.0	65.0%	73.0%
PH	306	957	48	9.2	45.9%	53.1%
PH	307	925	49	9.0	45.0%	50.8%
PH	308	928	48	9.0	45.0%	61.3%
PH	309	925	49	9.0	45.1%	63.5%
PH	310	754	36	14.0	70.0%	46.4%
PH	312	725	36	16.3	81.7%	41.4%
PH	314	1,248	48	5.0	25.0%	42.1%
PH	316	957	48	13.0	65.0%	55.4%
PH	318	928	48	5.3	26.7%	41.7%
PH	320	754	36	15.8	78.8%	49.9%
SEB	93	570	35	6.7	33.4%	40.0%
SEB	130	630	42	13.0	65.0%	49.1%
SEB	164	1,134	70	17.0	85.0%	78.3%
SEB	168	1,107	70	16.0	80.0%	60.2%
SEB	172	1,134	70	13.0	65.0%	67.4%
SEB	185	840	50	14.5	72.5%	56.5%
SEB	187	540	36	16.0	80.0%	83.2%
SEB	364	400	26	7.3	36.7%	55.6%
SEB	372	960	50	0.0	0.0%	0.0%
SEB	376	600	28	11.0	55.0%	56.5%
SEB	378	600	30	12.0	60.0%	46.1%
SEB	384	660	44	8.0	40.0%	57.7%
SEB	386	600	40	12.0	60.0%	76.9%
SEB	388	600	30	16.0	80.0%	49.2%

Building	Room	ASF	Capacity	WRH	WRH%	Station Occupancy
SFH	163	816	63	9.0	45.0%	81.0%
SFH	164	644	48	17.7	88.3%	46.9%
SFH	165	945	63	5.0	25.0%	75.6%
SFH	166	644	48	12.0	60.0%	45.1%
SFH	167	644	48	12.0	60.0%	53.1%
SFH	168	644	48	13.0	65.0%	63.0%
SFH	169	644	40	16.3	81.7%	49.6%
SFH	170	644	48	7.0	35.0%	67.6%
SFH	171	644	30	10.7	53.4%	63.5%
SFH	172	644	48	15.0	75.0%	42.9%
SFH	173	644	48	17.0	85.0%	40.8%
SFH	174	644	48	17.0	85.0%	50.2%
SFH	176	702	48	9.0	45.0%	49.8%
SFH	263	980	65	13.0	65.0%	76.9%
SFH	265	420	25	11.7	58.4%	42.6%
SFH	266	644	48	17.0	85.0%	52.3%
SFH	268	644	48	15.0	75.1%	39.7%
SFH	269	644	48	8.0	40.0%	52.1%
SFH	270	644	48	17.0	85.0%	51.5%
SFH	271	644	48	11.9	59.7%	68.1%
SFH	272	644	48	13.0	65.0%	49.8%
SFH	273	644	48	9.0	45.0%	42.4%
SFH	274	644	48	17.0	85.0%	43.1%
SFH	276	728	48	12.3	61.7%	41.6%
SFH	363	980	70	15.0	75.0%	73.6%
SFH	364	644	48	9.0	45.0%	63.4%
SFH	365	980	75	13.0	65.0%	75.7%
SFH	366	644	48	13.2	66.1%	46.6%
SFH	367	644	48	9.6	47.8%	41.8%
SFH	368	644	48	12.8	63.9%	48.5%
SFH	369	644	48	14.0	70.0%	56.8%
SFH	370	644	48	7.3	36.7%	50.4%
SFH	371	644	48	13.3	66.7%	47.7%
SFH	372	644	48	14.0	70.0%	61.0%
SFH	373	644	48	6.0	30.0%	33.3%
SFH	374	644	48	7.5	37.7%	55.1%
SFH	376	728	48	12.0	60.1%	42.6%
VAR	205	1,064	85	17.0	85.0%	60.0%
VAR	206	1,102	85	12.0	60.0%	78.8%
VAR	479	966	30	12.0	60.1%	56.7%
WH	102	810	60	9.0	45.0%	58.5%
WH	105	783	60	9.0	45.0%	49.3%
WH	124	529	85	9.0	45.0%	71.6%
WH	301	300	16	10.0	50.0%	33.8%
WH	313	480	30	11.6	57.8%	57.3%
Totals	106	102,015	6,211	1,267.6		
Averages		962	59	12.0	59.8%	65.7%

Report 5 – Fall 2013

- Evening Utilization 5 pm to 10 pm
- 25 Available Hours per Week

Building	Room	ASF	Capacity	WRH	WRH%	Station Occupancy
DHE	200	812	95	18.0	72.0%	56.0%
DHE	201	3,596	314	5.0	20.0%	26.6%
DHE	202	648	52	8.0	32.0%	32.7%
DHE	203	918	70	17.1	68.4%	85.4%
DHE	204	638	30	10.7	42.9%	30.0%
DHE	236	380	30	12.0	48.0%	18.9%
DHE	237	380	30	14.0	56.0%	38.6%
EH	204	570	30	14.2	56.8%	64.1%
EH	206	570	30	11.7	46.6%	53.5%
EH	208	720	40	13.2	52.8%	61.0%
EH	210	720	45	12.2	48.8%	48.9%
EH	212	720	40	12.7	50.8%	47.6%
EH	214	837	48	12.7	50.8%	63.4%
EH	235	1,054	40	15.4	61.7%	61.6%
EH	237	1,054	40	16.4	65.7%	57.0%
EH	239	1,054	40	13.7	54.8%	45.4%
HHB	1005	1,828	80	11.6	46.6%	54.7%
HHB	1006	1,563	50	12.2	48.6%	60.1%
HHB	1031	729	30	6.8	27.1%	29.8%
HHB	1050	4,384	200	4.6	18.2%	66.7%
HHB	2023	1,442	50	11.3	45.3%	55.0%
HHB	2085	1,213	55	13.7	54.6%	62.8%
HHB	2086	1,307	60	11.0	43.9%	49.0%
HHB	4043	1,938	80	13.8	55.0%	30.4%
HHB	4050	2,695	112	10.0	40.0%	49.4%
HHB	5036	1,208	50	12.1	48.6%	41.7%
HHB	5037	1,967	80	14.4	57.5%	49.0%
HHB	5045	2,730	112	10.5	42.1%	57.5%
HHS	190	2,024	187	8.0	32.0%	48.4%
HHS	195	2,254	187	4.1	16.2%	32.9%
HHS	220	550	40	14.8	59.1%	37.7%
HHS	225	414	30	10.0	40.0%	62.3%
NFH	156	1,980	144	9.1	36.2%	50.4%
ODH	202A	1,344	83	6.0	24.0%	75.1%
ODH	202B	1,848	111	4.6	18.2%	55.1%
ODH	202C	1,394	83	12.0	48.0%	34.9%
PH	302	1,711	72	13.7	54.8%	51.2%
PH	306	957	48	14.2	56.8%	51.0%
PH	307	925	49	11.6	46.6%	41.4%
PH	308	928	48	10.6	42.6%	45.1%
PH	309	925	49	13.2	52.8%	28.0%
PH	310	754	36	14.2	56.8%	77.1%
PH	312	725	36	11.7	46.6%	27.0%
PH	314	1,248	48	14.7	58.8%	42.6%
PH	316	957	48	15.2	60.8%	41.9%
PH	318	928	48	14.2	56.8%	21.9%
PH	320	754	36	15.8	63.0%	54.6%
SEB	93	570	35	15.4	61.5%	57.4%
SEB	130	630	42	16.0	64.0%	21.4%
SEB	164	1,134	70	16.0	64.0%	58.2%
SEB	168	1,107	70	14.0	56.0%	74.3%
SEB	172	1,134	70	17.0	68.0%	39.9%
SEB	185	840	50	17.5	70.0%	33.4%
SEB	187	540	36	13.0	52.0%	42.1%
SEB	364	400	26	15.8	63.1%	53.0%
SEB	372	960	50	12.0	48.0%	36.0%
SEB	376	600	28	17.0	68.0%	29.8%
SEB	378	600	30	18.0	72.0%	34.8%
SEB	384	660	44	14.0	56.0%	38.1%
SEB	386	600	40	18.0	72.0%	42.9%
SEB	388	600	30	16.3	65.1%	42.8%

Building	Room	ASF	Capacity	WRH	WRH%	Station Occupancy
SFH	163	816	63	14.7	58.8%	62.4%
SFH	164	644	48	16.6	66.4%	30.5%
SFH	165	945	63	8.1	32.4%	83.5%
SFH	166	644	48	15.7	62.8%	48.2%
SFH	167	644	48	15.7	62.8%	42.7%
SFH	168	644	48	14.8	59.0%	36.7%
SFH	169	644	40	14.8	59.0%	52.7%
SFH	170	644	48	13.2	52.8%	54.4%
SFH	171	644	30	10.6	42.6%	61.1%
SFH	172	644	48	15.7	62.8%	44.5%
SFH	173	644	48	12.1	48.2%	35.8%
SFH	174	644	48	10.1	40.6%	61.7%
SFH	176	702	48	13.7	54.8%	54.1%
SFH	263	980	65	8.1	32.4%	76.5%
SFH	265	420	25	7.1	28.4%	42.0%
SFH	266	644	48	13.9	55.5%	48.6%
SFH	268	644	48	14.2	56.8%	53.1%
SFH	269	644	48	14.2	56.8%	49.5%
SFH	270	644	48	16.1	64.4%	37.1%
SFH	271	644	48	11.7	46.6%	52.8%
SFH	272	644	48	10.6	42.6%	29.2%
SFH	273	644	48	14.2	56.8%	47.9%
SFH	274	644	48	9.6	38.2%	37.5%
SFH	276	728	48	14.7	58.8%	60.3%
SFH	363	980	70	10.1	40.6%	54.4%
SFH	364	644	48	13.7	54.8%	64.3%
SFH	365	980	75	17.0	68.0%	76.4%
SFH	366	644	48	7.1	28.4%	65.6%
SFH	367	644	48	10.6	42.6%	54.9%
SFH	368	644	48	13.7	54.8%	56.3%
SFH	369	644	48	10.6	42.4%	42.5%
SFH	370	644	48	13.2	52.8%	33.0%
SFH	371	644	48	10.6	42.6%	47.2%
SFH	372	644	48	13.2	52.8%	40.2%
SFH	373	644	48	10.1	40.6%	37.1%
SFH	374	644	48	7.1	28.4%	59.4%
SFH	376	728	48	15.1	60.4%	36.1%
VAR	205	1,064	85	16.9	67.7%	61.0%
VAR	206	1,102	85	16.2	64.8%	65.0%
VAR	479	966	30	10.6	42.6%	78.9%
WH	102	810	60	8.6	34.2%	66.7%
WH	105	783	60	10.6	42.6%	53.3%
WH	124	529	85	9.0	36.0%	16.7%
WH	301	300	16	13.1	52.4%	55.2%
WH	313	480	30	10.6	42.6%	54.4%
Totals	106	102,015	6,211	1,334.4		
Averages		962	59	12.6	50.4%	45.7%

Report 6 – Fall 2013

- Saturday Utilization 8 am to 5 pm
- 9 Available Hours per Week

Building	Room	ASF	Capacity	WRH	WRH%	Station Occupancy
DHE	201	3596	314	3.22	35.8%	21.0%

DHE	236	380	30	3.72	41.3%	56.7%
EH	204	570	30	3.55	39.4%	23.3%
EH	206	570	30	3.55	39.4%	80.0%
EH	212	720	40	3.05	33.9%	80.0%
EH	214	837	48	3.22	35.8%	39.6%
EH	235	1054	40	8.27	91.9%	35.4%
EH	237	1054	40	8.77	97.4%	35.0%
PH	306	957	48	5.22	58.0%	31.3%
PH	309	925	49	7.88	87.6%	16.3%
PH	312	725	36	6.22	69.1%	41.7%
PH	314	1248	48	6.22	69.1%	31.3%
PH	320	754	36	7.10	78.9%	25.0%
SEB	164	1134	70	2.22	24.7%	52.9%
SEB	168	1107	70	2.22	24.7%	131.4%
SEB	185	840	50	2.22	24.7%	82.0%
SEB	187	540	36	3.72	41.3%	11.1%
VAR	205	1064	85	3.55	39.4%	10.6%
WH	105	783	60	2.22	24.7%	90.0%
WH	313	480	30	3.55	39.4%	70.0%
Totals	20	19,338	1,190	90		
Averages		967	60	4.5	49.8%	33.6%

Report 7 – Winter 2014

- All Day Utilization 8 am to 10 pm
- 75 Available Hours per Week

Building	Room	ASF	Capacity	WRH	WRH%	Station Occupancy
DHE	200	812	95	51.1	68.2%	52.8%
DHE	201	3,596	314	34.7	46.3%	31.1%
DHE	202	648	52	36.3	48.4%	46.9%
DHE	203	918	70	28.0	37.3%	60.1%
DHE	204	638	30	34.0	45.3%	36.5%
DHE	236	380	30	36.0	48.0%	55.6%
DHE	237	380	30	32.0	42.7%	56.7%
EH	204	570	30	48.6	64.8%	65.0%
EH	206	570	30	40.0	53.3%	47.8%
EH	208	720	40	38.3	51.1%	62.9%
EH	210	720	45	44.0	58.7%	53.3%
EH	212	720	40	53.8	71.7%	68.6%
EH	214	837	48	46.7	62.3%	48.2%
EH	235	1,054	40	45.6	60.9%	60.2%
EH	237	1,054	40	50.4	67.2%	57.6%
EH	239	1,054	40	35.1	46.7%	71.0%
HHB	1005	1,828	80	29.1	38.8%	46.4%
HHB	1006	1,563	50	48.9	65.2%	54.5%
HHB	1031	729	30	27.7	37.0%	50.6%
HHB	1050	4,384	200	34.7	46.2%	65.8%
HHB	2023	1,442	50	39.4	52.5%	62.9%
HHB	2085	1,213	55	35.0	46.7%	52.8%
HHB	2086	1,307	60	29.5	39.4%	44.6%
HHB	4043	1,938	80	31.4	41.9%	59.1%
HHB	4050	2,695	112	33.3	44.4%	75.0%
HHB	5036	1,208	50	44.3	59.1%	68.0%
HHB	5037	1,967	80	31.3	41.7%	46.7%
HHB	5045	2,730	112	42.9	57.2%	69.6%
HHS	190	2,024	187	40.0	53.3%	74.6%
HHS	195	2,254	187	49.1	65.5%	56.5%
HHS	220	550	40	40.0	53.3%	60.0%
HHS	225	414	30	38.8	51.7%	48.1%
NFH	156	1,980	144	39.1	52.1%	74.6%
ODH	202A	1,344	83	36.4	48.5%	61.9%
ODH	202B	1,848	111	39.1	52.1%	63.0%

Building	Room	ASF	Capacity	WRH	WRH%	Station Occupancy
ODH	202C	1,394	83	34.3	45.8%	54.6%
PH	302	1,711	72	45.1	60.2%	49.3%
PH	306	957	48	40.9	54.6%	57.9%
PH	307	925	49	44.7	59.7%	43.6%
PH	308	928	48	27.7	37.0%	50.1%
PH	309	925	49	46.2	61.6%	55.5%
PH	310	754	36	48.5	64.6%	57.5%
PH	312	725	36	43.1	57.5%	48.4%
PH	314	1,248	48	49.4	65.8%	55.6%
PH	316	957	48	46.2	61.6%	64.6%
PH	318	928	48	45.3	60.4%	46.8%
PH	320	754	36	43.5	58.0%	54.8%
SEB	93	570	35	34.2	45.6%	42.8%
SEB	130	630	42	40.0	53.3%	64.5%
SEB	164	1,134	70	48.0	64.0%	58.7%
SEB	168	1,107	70	50.0	66.7%	53.5%
SEB	172	1,134	70	43.2	57.6%	52.6%
SEB	185	840	50	48.9	65.2%	55.2%
SEB	187	540	36	40.0	53.3%	55.6%
SEB	364	400	26	32.0	42.7%	45.2%
SEB	372	960	50	16.2	21.6%	50.2%
SEB	376	600	28	40.0	53.3%	38.2%
SEB	378	600	30	40.0	53.3%	63.0%
SEB	384	660	44	54.0	72.0%	46.1%
SEB	386	600	40	48.0	64.0%	45.8%
SEB	388	600	30	41.4	55.2%	46.9%
SFH	163	816	63	44.5	59.4%	75.4%
SFH	164	644	48	48.4	64.5%	50.3%
SFH	165	945	63	31.1	41.5%	81.0%
SFH	166	644	48	38.4	51.2%	59.7%
SFH	167	644	48	47.5	63.3%	49.0%
SFH	168	644	48	46.2	61.6%	53.0%
SFH	169	644	40	46.2	61.6%	62.1%
SFH	170	644	48	51.6	68.9%	41.5%
SFH	171	644	30	51.1	68.1%	55.2%
SFH	172	644	48	43.0	57.4%	45.6%
SFH	173	644	48	44.2	58.9%	53.8%
SFH	174	644	48	47.5	63.3%	59.1%
SFH	176	702	48	35.1	46.8%	42.6%
SFH	263	980	65	37.0	49.4%	70.2%
SFH	265	420	25	34.8	46.4%	50.7%
SFH	266	644	48	41.8	55.7%	60.8%
SFH	268	644	48	45.7	60.9%	57.6%
SFH	269	644	48	50.1	66.9%	60.5%
SFH	270	644	48	43.7	58.2%	41.9%
SFH	271	644	48	52.4	69.9%	55.5%
SFH	272	644	48	36.9	49.2%	50.7%
SFH	273	644	48	42.6	56.9%	50.3%
SFH	274	644	48	49.7	66.3%	46.7%
SFH	276	728	48	49.7	66.3%	43.3%
SFH	363	980	70	35.1	46.8%	72.1%
SFH	364	644	48	46.7	62.2%	39.9%
SFH	365	980	75	43.4	57.9%	65.6%
SFH	366	644	48	44.4	59.2%	47.1%
SFH	367	644	48	31.5	42.0%	47.4%
SFH	368	644	48	38.6	51.5%	43.8%
SFH	369	644	48	44.0	58.7%	50.6%
SFH	370	644	48	49.7	66.3%	43.0%
SFH	371	644	48	43.6	58.1%	43.2%
SFH	372	644	48	37.8	50.4%	49.9%
SFH	373	644	48	40.4	53.9%	45.5%
SFH	374	644	48	41.3	55.0%	56.2%
SFH	376	728	48	44.4	59.3%	43.7%

Building	Room	ASF	Capacity	WRH	WRH%	Station Occupancy
VAR	205	1,064	85	50.2	66.9%	52.8%
VAR	206	1,102	85	53.1	70.8%	52.1%
VAR	479	966	30	50.2	66.9%	69.6%
WH	102	810	60	43.1	57.5%	67.1%
WH	105	783	60	31.1	41.5%	75.4%
WH	124	529	85	34.6	46.1%	55.9%
WH	301	300	16	34.7	46.2%	54.6%
WH	313	480	30	40.5	54.0%	55.6%
Totals	106	102,015	6,211	4,393.4		
Averages		962	59	41.4	55.3%	54.9%

Report 8 – Winter 2014

- Daytime Utilization 8 am to 5 pm
- 45 Available Hours per Week

Building	Room	ASF	Capacity	WRH	WRH%	Station Occupancy
DHE	200	812.0	95.0	34.1	75.9%	65.6%
DHE	201	3,596.0	314.0	30.7	68.3%	32.0%
DHE	202	648.0	52.0	24.3	53.9%	52.7%
DHE	203	918.0	70.0	23.0	51.1%	68.4%
DHE	204	638.0	30.0	22.0	48.9%	44.8%
DHE	236	380.0	30.0	23.0	51.1%	76.4%
DHE	237	380.0	30.0	20.0	44.4%	70.0%
EH	204	570.0	30.0	34.9	77.6%	60.2%
EH	206	570.0	30.0	24.7	54.8%	43.2%
EH	208	720.0	40.0	26.1	58.1%	62.3%
EH	210	720.0	45.0	31.8	70.6%	51.7%
EH	212	720.0	40.0	40.1	89.1%	67.2%
EH	214	837.0	48.0	34.0	75.6%	53.1%
EH	235	1,054.0	40.0	29.7	66.0%	59.9%
EH	237	1,054.0	40.0	33.9	75.4%	61.6%
EH	239	1,054.0	40.0	20.9	46.4%	69.2%
HHB	1005	1,828.0	80.0	17.5	39.0%	44.5%
HHB	1006	1,563.0	50.0	38.8	86.2%	50.1%
HHB	1031	729.0	30.0	22.7	50.4%	55.9%
HHB	1050	4,384.0	200.0	23.0	51.1%	74.9%
HHB	2023	1,442.0	50.0	24.7	55.0%	59.2%
HHB	2085	1,213.0	55.0	29.0	64.4%	53.0%
HHB	2086	1,307.0	60.0	20.0	44.4%	46.7%
HHB	4043	1,938.0	80.0	23.0	51.1%	68.9%
HHB	4050	2,695.0	112.0	22.6	50.3%	77.7%
HHB	5036	1,208.0	50.0	31.2	69.4%	67.6%
HHB	5037	1,967.0	80.0	19.7	43.8%	49.6%
HHB	5045	2,730.0	112.0	35.2	78.3%	76.6%
HHS	190	2,024.0	187.0	35.0	77.8%	79.2%
HHS	195	2,254.0	187.0	40.1	89.2%	59.1%
HHS	220	550.0	40.0	28.0	62.2%	69.3%
HHS	225	414.0	30.0	23.0	51.1%	59.7%
NFH	156	1,980.0	144.0	31.0	68.9%	84.9%
ODH	202A	1,344.0	83.0	27.9	62.0%	61.6%
ODH	202B	1,848.0	111.0	31.0	68.9%	64.8%
ODH	202C	1,394.0	83.0	20.1	44.7%	68.4%
PH	302	1,711.0	72.0	29.9	66.5%	59.0%
PH	306	957.0	48.0	30.3	67.3%	59.5%
PH	307	925.0	49.0	34.1	75.8%	52.3%
PH	308	928.0	48.0	17.1	38.0%	53.2%
PH	309	925.0	49.0	31.0	68.9%	57.9%
PH	310	754.0	36.0	33.3	73.9%	54.0%
PH	312	725.0	36.0	28.9	64.2%	50.3%
PH	314	1,248.0	48.0	36.0	80.0%	64.6%
PH	316	957.0	48.0	32.0	71.1%	79.2%
PH	318	928.0	48.0	30.1	66.9%	52.7%
PH	320	754.0	36.0	29.3	65.1%	61.2%
SEB	93	570.0	35.0	22.7	50.4%	52.2%
SEB	130	630.0	42.0	29.0	64.4%	68.5%
SEB	164	1,134.0	70.0	30.0	66.7%	65.2%
SEB	168	1,107.0	70.0	32.0	71.1%	64.0%
SEB	172	1,134.0	70.0	30.0	66.7%	63.9%
SEB	185	840.0	50.0	35.9	79.8%	66.4%
SEB	187	540.0	36.0	23.0	51.1%	64.1%
SEB	364	400.0	26.0	27.0	60.0%	49.6%
SEB	372	960.0	50.0	4.2	9.3%	8.5%
SEB	376	600.0	28.0	23.0	51.1%	42.2%

Building	Room	ASF	Capacity	WRH	WRH%	Station Occupancy
SEB	378	600.0	30.0	22.0	48.9%	72.7%
SEB	384	660.0	44.0	38.0	84.4%	57.9%
SEB	386	600.0	40.0	34.0	75.6%	54.3%
SEB	388	600.0	30.0	30.3	67.4%	50.1%
SFH	163	816.0	63.0	33.4	74.2%	86.8%
SFH	164	644.0	48.0	33.7	74.8%	54.0%
SFH	165	945.0	63.0	24.0	53.3%	88.1%
SFH	166	644.0	48.0	24.7	54.8%	63.8%
SFH	167	644.0	48.0	35.3	78.5%	44.7%
SFH	168	644.0	48.0	31.0	68.9%	55.1%
SFH	169	644.0	40.0	31.0	68.9%	64.5%
SFH	170	644.0	48.0	39.0	86.7%	39.4%
SFH	171	644.0	30.0	39.0	86.7%	53.7%
SFH	172	644.0	48.0	36.0	80.0%	45.8%
SFH	173	644.0	48.0	32.0	71.1%	53.6%
SFH	174	644.0	48.0	37.3	83.0%	59.6%
SFH	176	702.0	48.0	28.0	62.2%	37.8%
SFH	263	980.0	65.0	21.9	48.7%	67.3%
SFH	265	420.0	25.0	28.0	62.2%	50.9%
SFH	266	644.0	48.0	30.6	68.0%	68.2%
SFH	268	644.0	48.0	32.0	71.1%	54.9%
SFH	269	644.0	48.0	35.4	78.8%	65.6%
SFH	270	644.0	48.0	27.0	60.0%	38.2%
SFH	271	644.0	48.0	36.3	80.8%	62.1%
SFH	272	644.0	48.0	29.4	65.2%	49.9%
SFH	273	644.0	48.0	31.0	68.9%	55.1%
SFH	274	644.0	48.0	36.0	80.0%	43.8%
SFH	276	728.0	48.0	35.0	77.8%	41.0%
SFH	363	980.0	70.0	19.0	42.2%	71.7%
SFH	364	644.0	48.0	31.6	70.1%	49.1%
SFH	365	980.0	75.0	34.3	76.2%	72.7%
SFH	366	644.0	48.0	30.2	67.2%	42.0%
SFH	367	644.0	48.0	24.9	55.3%	44.3%
SFH	368	644.0	48.0	32.0	71.1%	37.5%
SFH	369	644.0	48.0	33.3	74.1%	50.8%
SFH	370	644.0	48.0	35.0	77.8%	37.3%
SFH	371	644.0	48.0	32.0	71.1%	46.3%
SFH	372	644.0	48.0	25.7	57.1%	44.9%
SFH	373	644.0	48.0	28.4	63.0%	46.2%
SFH	374	644.0	48.0	29.7	65.9%	57.6%
SFH	376	728.0	48.0	29.4	65.2%	44.2%
VAR	205	1,064.0	85.0	36.0	80.0%	57.0%
VAR	206	1,102.0	85.0	36.9	82.1%	55.2%
VAR	479	966.0	30.0	35.0	77.8%	70.7%
WH	102	810.0	60.0	35.0	77.8%	69.0%
WH	105	783.0	60.0	24.0	53.3%	77.8%
WH	124	529.0	85.0	28.0	62.2%	60.5%
WH	301	300.0	16.0	23.0	51.1%	53.3%
WH	313	480.0	30.0	29.7	65.9%	56.1%
Totals	106	102,015.0	6,211.0	3,110.1		
Averages		962.4	58.6	29.3	65.2%	59.7%

Report 9 – Winter 2014

- Prime Time Utilization 10 am to 3 pm

- 25 Available Hours per Week

Building	Room	ASF	Capacity	WRH	WRH%	Station Occupancy
DHE	200	812	95	21.2	84.6%	59.4%
DHE	201	3,596	314	16.7	66.7%	35.7%
DHE	202	648	52	17.9	71.5%	52.2%
DHE	203	918	70	14.3	57.4%	66.3%
DHE	204	638	30	16.0	64.0%	51.7%
DHE	236	380	30	14.0	56.0%	80.0%
DHE	237	380	30	14.0	56.0%	70.0%
EH	204	570	30	20.0	80.0%	63.3%
EH	206	570	30	20.7	82.7%	45.4%
EH	208	720	40	19.6	78.4%	56.5%
EH	210	720	45	20.6	82.4%	48.5%
EH	212	720	40	22.8	91.1%	64.4%
EH	214	837	48	18.9	75.7%	48.4%
EH	235	1,054	40	15.9	63.4%	54.5%
EH	237	1,054	40	20.9	83.7%	65.6%
EH	239	1,054	40	13.9	55.4%	76.7%
HHB	1005	1,828	80	15.6	62.2%	48.1%
HHB	1006	1,563	50	22.0	88.0%	49.6%
HHB	1031	729	30	10.3	41.3%	47.4%
HHB	1050	4,384	200	16.0	64.0%	86.9%
HHB	2023	1,442	50	17.2	68.9%	59.7%
HHB	2085	1,213	55	23.0	92.0%	52.0%
HHB	2086	1,307	60	16.0	64.0%	41.3%
HHB	4043	1,938	80	12.0	48.0%	69.2%
HHB	4050	2,695	112	13.1	52.5%	84.8%
HHB	5036	1,208	50	17.9	71.5%	68.1%
HHB	5037	1,967	80	11.0	44.0%	45.5%
HHB	5045	2,730	112	20.0	80.1%	73.9%
HHS	190	2,024	187	18.0	72.0%	76.4%
HHS	195	2,254	187	23.1	92.5%	53.4%
HHS	220	550	40	20.0	80.0%	79.0%
HHS	225	414	30	17.0	68.0%	60.8%
NFH	156	1,980	144	22.0	88.0%	84.8%
ODH	202A	1,344	83	16.4	65.7%	58.3%
ODH	202B	1,848	111	18.0	72.0%	72.9%
ODH	202C	1,394	83	15.1	60.5%	69.2%
PH	302	1,711	72	16.0	64.0%	64.2%
PH	306	957	48	18.0	72.0%	60.4%
PH	307	925	49	21.1	84.4%	51.7%
PH	308	928	48	13.3	53.4%	52.9%
PH	309	925	49	18.0	72.0%	62.8%
PH	310	754	36	22.0	88.0%	56.6%
PH	312	725	36	18.3	73.4%	53.6%
PH	314	1,248	48	23.0	92.0%	71.9%
PH	316	957	48	23.0	92.0%	84.1%
PH	318	928	48	17.6	70.4%	56.9%
PH	320	754	36	17.4	69.8%	62.5%
SEB	93	570	35	18.0	72.0%	52.4%
SEB	130	630	42	17.0	68.0%	68.9%
SEB	164	1,134	70	18.0	72.0%	61.4%
SEB	168	1,107	70	22.0	88.0%	70.9%
SEB	172	1,134	70	18.0	72.0%	69.5%
SEB	185	840	50	20.0	80.0%	68.4%
SEB	187	540	36	16.0	64.0%	67.4%
SEB	364	400	26	18.0	72.0%	44.0%
SEB	372	960	50	4.2	16.7%	8.5%
SEB	376	600	28	16.0	64.0%	28.6%
SEB	378	600	30	14.0	56.0%	73.3%
SEB	384	660	44	21.0	84.0%	59.0%

Building	Room	ASF	Capacity	WRH	WRH%	Station Occupancy
SEB	386	600	40	18.0	72.0%	65.3%
SEB	388	600	30	20.3	81.4%	59.8%
SFH	163	816	63	21.4	85.6%	96.0%
SFH	164	644	48	22.0	88.0%	60.8%
SFH	165	945	63	20.0	80.0%	87.3%
SFH	166	644	48	18.7	74.7%	68.4%
SFH	167	644	48	20.3	81.4%	40.9%
SFH	168	644	48	15.3	61.4%	56.7%
SFH	169	644	40	22.0	88.0%	69.1%
SFH	170	644	48	22.0	88.0%	37.9%
SFH	171	644	30	22.0	88.0%	53.9%
SFH	172	644	48	23.0	92.0%	48.6%
SFH	173	644	48	19.7	78.7%	45.4%
SFH	174	644	48	20.3	81.4%	68.4%
SFH	176	702	48	22.0	88.0%	38.4%
SFH	263	980	65	16.9	67.7%	68.1%
SFH	265	420	25	19.0	76.0%	55.2%
SFH	266	644	48	22.6	90.6%	67.4%
SFH	268	644	48	23.0	92.0%	59.4%
SFH	269	644	48	18.4	73.8%	62.6%
SFH	270	644	48	19.7	78.7%	42.7%
SFH	271	644	48	19.3	77.4%	55.0%
SFH	272	644	48	18.0	72.0%	55.2%
SFH	273	644	48	22.0	88.0%	61.2%
SFH	274	644	48	19.0	76.0%	43.6%
SFH	276	728	48	22.0	88.0%	38.8%
SFH	363	980	70	10.0	40.0%	90.9%
SFH	364	644	48	21.2	84.9%	53.7%
SFH	365	980	75	25.3	101.1%	80.8%
SFH	366	644	48	19.7	78.9%	43.7%
SFH	367	644	48	16.9	67.6%	47.3%
SFH	368	644	48	19.7	78.7%	41.4%
SFH	369	644	48	21.0	84.0%	52.0%
SFH	370	644	48	18.0	72.0%	41.1%
SFH	371	644	48	19.7	78.7%	47.5%
SFH	372	644	48	17.3	69.4%	38.5%
SFH	373	644	48	17.3	69.4%	44.6%
SFH	374	644	48	21.3	85.3%	66.9%
SFH	376	728	48	17.3	69.4%	48.7%
VAR	205	1,064	85	23.0	92.0%	55.3%
VAR	206	1,102	85	21.9	87.7%	54.6%
VAR	479	966	30	20.0	80.0%	68.7%
WH	102	810	60	22.0	88.0%	71.2%
WH	105	783	60	18.0	72.0%	83.7%
WH	124	529	85	19.0	76.0%	64.5%
WH	301	300	16	18.0	72.0%	56.9%
WH	313	480	30	20.7	82.7%	60.1%
Totals	106	102,015	6,211	1,975.7		
Averages		962	59	18.6	74.6%	60.7%

Report 10 – Winter 2014

- Off Peak Utilization 8 am to 10 am and 3 pm to 5 pm
- 20 Available Hours per Week

Building	Room	ASF	Capacity	WRH	WRH%	Station Occupancy
DHE	200	812.0	95.0	13.0	65.0%	75.7%
DHE	201	3,596.0	314.0	14.0	70.2%	27.7%
DHE	202	648.0	52.0	6.4	31.9%	54.2%
DHE	203	918.0	70.0	8.7	43.4%	71.9%
DHE	204	638.0	30.0	6.0	30.0%	26.7%
DHE	236	380.0	30.0	9.0	45.0%	70.7%
DHE	237	380.0	30.0	6.0	30.0%	70.0%
EH	204	570.0	30.0	14.9	74.7%	56.0%
EH	206	570.0	30.0	4.0	20.0%	31.7%
EH	208	720.0	40.0	6.5	32.7%	79.4%
EH	210	720.0	45.0	11.2	56.0%	57.7%
EH	212	720.0	40.0	17.3	86.5%	70.9%
EH	214	837.0	48.0	15.1	75.5%	59.1%
EH	235	1,054.0	40.0	13.9	69.3%	66.0%
EH	237	1,054.0	40.0	13.0	65.0%	55.0%
EH	239	1,054.0	40.0	7.0	35.0%	54.3%
HHB	1005	1,828.0	80.0	2.0	10.0%	16.3%
HHB	1006	1,563.0	50.0	16.8	83.9%	50.7%
HHB	1031	729.0	30.0	12.3	61.7%	63.0%
HHB	1050	4,384.0	200.0	7.0	35.0%	47.5%
HHB	2023	1,442.0	50.0	7.5	37.5%	58.1%
HHB	2085	1,213.0	55.0	6.0	30.0%	57.0%
HHB	2086	1,307.0	60.0	4.0	20.0%	68.3%
HHB	4043	1,938.0	80.0	11.0	55.0%	68.6%
HHB	4050	2,695.0	112.0	9.5	47.5%	67.9%
HHB	5036	1,208.0	50.0	13.3	66.6%	67.0%
HHB	5037	1,967.0	80.0	8.7	43.6%	54.8%
HHB	5045	2,730.0	112.0	15.2	76.0%	80.2%
HHS	190	2,024.0	187.0	17.0	85.0%	82.3%
HHS	195	2,254.0	187.0	17.0	85.0%	66.8%
HHS	220	550.0	40.0	8.0	40.0%	45.0%
HHS	225	414.0	30.0	6.0	30.0%	56.7%
NFH	156	1,980.0	144.0	9.0	45.0%	84.9%
ODH	202A	1,344.0	83.0	11.5	57.3%	66.3%
ODH	202B	1,848.0	111.0	13.0	65.0%	53.7%
ODH	202C	1,394.0	83.0	5.0	25.0%	65.8%
PH	302	1,711.0	72.0	13.9	69.7%	53.0%
PH	306	957.0	48.0	12.3	61.4%	58.1%
PH	307	925.0	49.0	13.0	65.0%	53.2%
PH	308	928.0	48.0	3.8	18.8%	54.2%
PH	309	925.0	49.0	13.0	65.0%	51.2%
PH	310	754.0	36.0	11.3	56.4%	49.1%
PH	312	725.0	36.0	10.5	52.7%	44.7%
PH	314	1,248.0	48.0	13.0	65.0%	51.6%
PH	316	957.0	48.0	9.0	45.0%	66.7%
PH	318	928.0	48.0	12.5	62.5%	46.8%
PH	320	754.0	36.0	11.9	59.3%	59.3%
SEB	93	570.0	35.0	4.7	23.4%	51.5%
SEB	130	630.0	42.0	12.0	60.0%	67.9%
SEB	164	1,134.0	70.0	12.0	60.0%	70.8%
SEB	168	1,107.0	70.0	10.0	50.0%	48.9%
SEB	172	1,134.0	70.0	12.0	60.0%	55.4%
SEB	185	840.0	50.0	15.9	79.7%	64.0%
SEB	187	540.0	36.0	7.0	35.0%	56.7%
SEB	364	400.0	26.0	9.0	45.0%	60.7%
SEB	372	960.0	50.0	0.0	0.0%	0.0%
SEB	376	600.0	28.0	7.0	35.0%	73.5%
SEB	378	600.0	30.0	8.0	40.0%	71.7%
SEB	384	660.0	44.0	17.0	85.0%	56.6%
SEB	386	600.0	40.0	16.0	80.0%	41.9%
SEB	388	600.0	30.0	10.0	50.0%	30.3%

Building	Room	ASF	Capacity	WRH	WRH%	Station Occupancy
SFH	163	816.0	63.0	12.0	60.0%	70.2%
SFH	164	644.0	48.0	11.7	58.3%	41.1%
SFH	165	945.0	63.0	4.0	20.0%	92.1%
SFH	166	644.0	48.0	6.0	30.0%	49.3%
SFH	167	644.0	48.0	15.0	75.0%	49.7%
SFH	168	644.0	48.0	15.7	78.4%	53.5%
SFH	169	644.0	40.0	9.0	45.0%	53.3%
SFH	170	644.0	48.0	17.0	85.0%	41.3%
SFH	171	644.0	30.0	17.0	85.0%	53.3%
SFH	172	644.0	48.0	13.0	65.0%	40.9%
SFH	173	644.0	48.0	12.3	61.7%	66.5%
SFH	174	644.0	48.0	17.0	85.0%	49.0%
SFH	176	702.0	48.0	6.0	30.0%	35.4%
SFH	263	980.0	65.0	5.0	25.0%	64.3%
SFH	265	420.0	25.0	9.0	45.0%	41.8%
SFH	266	644.0	48.0	7.9	39.7%	70.5%
SFH	268	644.0	48.0	9.0	45.0%	43.5%
SFH	269	644.0	48.0	17.0	85.0%	68.9%
SFH	270	644.0	48.0	7.3	36.7%	26.2%
SFH	271	644.0	48.0	17.0	85.0%	70.2%
SFH	272	644.0	48.0	11.3	56.7%	41.4%
SFH	273	644.0	48.0	9.0	45.0%	40.3%
SFH	274	644.0	48.0	17.0	85.0%	43.9%
SFH	276	728.0	48.0	13.0	65.0%	44.6%
SFH	363	980.0	70.0	9.0	45.0%	50.3%
SFH	364	644.0	48.0	10.3	51.7%	39.7%
SFH	365	980.0	75.0	9.0	45.0%	50.1%
SFH	366	644.0	48.0	10.5	52.5%	39.0%
SFH	367	644.0	48.0	8.0	40.0%	38.0%
SFH	368	644.0	48.0	12.3	61.7%	31.3%
SFH	369	644.0	48.0	12.3	61.7%	48.9%
SFH	370	644.0	48.0	17.0	85.0%	33.2%
SFH	371	644.0	48.0	12.3	61.7%	44.3%
SFH	372	644.0	48.0	8.3	41.7%	58.3%
SFH	373	644.0	48.0	11.0	55.1%	48.7%
SFH	374	644.0	48.0	8.3	41.7%	33.6%
SFH	376	728.0	48.0	12.0	60.1%	37.7%
VAR	205	1,064.0	85.0	13.0	65.0%	59.9%
VAR	206	1,102.0	85.0	15.0	75.0%	56.1%
VAR	479	966.0	30.0	15.0	75.1%	73.3%
WH	102	810.0	60.0	13.0	65.0%	65.4%
WH	105	783.0	60.0	6.0	30.0%	60.0%
WH	124	529.0	85.0	9.0	45.0%	52.2%
WH	301	300.0	16.0	5.0	25.0%	40.0%
WH	313	480.0	30.0	9.0	45.0%	47.0%
Totals	106	102,015	6,211	1,134.5		
Averages		962	59	10.7	53.5%	58.1%

Report 11 – Winter 2014

- Evening Utilization 5 pm to 10 pm
- 25 Available Hours per Week

Building	Room	ASF	Capacity	WRH	WRH%	Station Occupancy
DHE	200	812	95	17.0	68.0%	27.2%
DHE	201	3,596	314	4.0	16.0%	23.8%
DHE	202	648	52	12.0	48.0%	35.3%
DHE	203	918	70	5.0	20.0%	22.0%
DHE	204	638	30	12.0	48.0%	21.1%
DHE	236	380	30	13.0	52.0%	18.7%
DHE	237	380	30	12.0	48.0%	34.4%
EH	204	570	30	13.7	54.8%	77.2%
EH	206	570	30	15.3	61.2%	55.3%
EH	208	720	40	12.2	48.8%	64.4%
EH	210	720	45	12.2	48.8%	57.2%
EH	212	720	40	13.7	54.8%	72.6%
EH	214	837	48	12.7	50.8%	34.9%
EH	235	1,054	40	15.9	63.7%	60.7%
EH	237	1,054	40	16.5	65.9%	49.6%
EH	239	1,054	40	14.2	56.8%	73.6%
HHB	1005	1,828	80	11.6	46.2%	49.5%
HHB	1006	1,563	50	10.1	40.4%	71.6%
HHB	1031	729	30	5.1	20.2%	26.7%
HHB	1050	4,384	200	11.7	46.6%	48.0%
HHB	2023	1,442	50	14.6	58.6%	69.0%
HHB	2085	1,213	55	6.1	24.2%	51.7%
HHB	2086	1,307	60	9.6	38.2%	40.3%
HHB	4043	1,938	80	8.4	33.7%	32.3%
HHB	4050	2,695	112	10.6	42.6%	69.3%
HHB	5036	1,208	50	13.1	52.4%	68.9%
HHB	5037	1,967	80	11.6	46.2%	41.7%
HHB	5045	2,730	112	7.7	30.7%	37.3%
HHS	190	2,024	187	5.0	20.0%	42.2%
HHS	195	2,254	187	9.0	36.0%	45.1%
HHS	220	550	40	12.0	48.0%	38.3%
HHS	225	414	30	15.8	63.1%	31.2%
NFH	156	1,980	144	8.1	32.4%	35.2%
ODH	202A	1,344	83	8.0	32.0%	62.0%
ODH	202B	1,848	111	8.1	32.4%	55.8%
ODH	202C	1,394	83	14.2	56.8%	35.1%
PH	302	1,711	72	15.2	60.8%	30.3%
PH	306	957	48	10.6	42.6%	53.5%
PH	307	925	49	10.6	42.6%	15.6%
PH	308	928	48	10.6	42.6%	45.1%
PH	309	925	49	15.2	60.8%	50.6%
PH	310	754	36	15.2	60.8%	65.2%
PH	312	725	36	14.2	56.8%	44.4%
PH	314	1,248	48	13.4	53.5%	31.5%
PH	316	957	48	14.2	56.8%	31.8%
PH	318	928	48	15.2	60.8%	35.1%
PH	320	754	36	14.2	56.8%	41.7%
SEB	93	570	35	11.6	46.2%	24.5%
SEB	130	630	42	11.0	44.0%	54.1%
SEB	164	1,134	70	18.0	72.0%	47.9%
SEB	168	1,107	70	18.0	72.0%	34.9%
SEB	172	1,134	70	13.2	52.9%	27.2%
SEB	185	840	50	13.0	52.0%	24.2%
SEB	187	540	36	17.0	68.0%	44.0%
SEB	364	400	26	5.0	20.0%	21.5%
SEB	372	960	50	12.0	48.0%	64.7%
SEB	376	600	28	17.0	68.0%	32.8%
SEB	378	600	30	18.0	72.0%	51.1%
SEB	384	660	44	16.0	64.0%	18.2%
SEB	386	600	40	14.0	56.0%	25.4%
SEB	388	600	30	11.0	44.2%	38.1%

Building	Room	ASF	Capacity	WRH	WRH%	Station Occupancy
SFH	163	816	63	11.2	44.6%	41.2%
SFH	164	644	48	14.7	58.8%	41.8%
SFH	165	945	63	7.1	28.4%	57.1%
SFH	166	644	48	13.7	54.8%	52.5%
SFH	167	644	48	12.2	48.6%	61.8%
SFH	168	644	48	15.2	60.8%	48.8%
SFH	169	644	40	15.2	60.8%	57.2%
SFH	170	644	48	12.6	50.6%	48.2%
SFH	171	644	30	12.1	48.4%	60.2%
SFH	172	644	48	7.1	28.2%	44.4%
SFH	173	644	48	12.2	48.6%	54.4%
SFH	174	644	48	10.1	40.6%	57.2%
SFH	176	702	48	7.1	28.4%	61.5%
SFH	263	980	65	15.1	60.4%	74.6%
SFH	265	420	25	6.8	27.1%	50.1%
SFH	266	644	48	11.2	44.8%	40.8%
SFH	268	644	48	13.7	54.8%	63.7%
SFH	269	644	48	14.7	58.8%	48.2%
SFH	270	644	48	16.7	66.7%	47.8%
SFH	271	644	48	16.1	64.4%	40.7%
SFH	272	644	48	7.6	30.2%	53.7%
SFH	273	644	48	11.7	46.6%	37.4%
SFH	274	644	48	13.7	54.8%	54.5%
SFH	276	728	48	14.7	58.8%	48.7%
SFH	363	980	70	16.1	64.4%	72.6%
SFH	364	644	48	15.1	60.4%	20.5%
SFH	365	980	75	9.1	36.6%	39.1%
SFH	366	644	48	14.2	56.8%	57.8%
SFH	367	644	48	6.6	26.4%	58.8%
SFH	368	644	48	6.6	26.4%	74.5%
SFH	369	644	48	10.6	42.6%	50.0%
SFH	370	644	48	14.7	58.8%	56.6%
SFH	371	644	48	11.6	46.2%	34.8%
SFH	372	644	48	12.1	48.4%	60.6%
SFH	373	644	48	12.1	48.4%	43.9%
SFH	374	644	48	11.6	46.4%	52.7%
SFH	376	728	48	15.1	60.4%	42.6%
VAR	205	1,064	85	14.2	56.8%	42.1%
VAR	206	1,102	85	16.2	64.8%	45.0%
VAR	479	966	30	15.2	60.8%	67.1%
WH	102	810	60	8.1	32.4%	58.5%
WH	105	783	60	7.1	28.4%	67.5%
WH	124	529	85	6.6	26.4%	36.4%
WH	301	300	16	11.7	46.6%	57.4%
WH	313	480	30	10.8	43.3%	54.1%
Totals	106	102,015	6,211	1,282.8		
Averages		962	59	12.1	48.4%	43.3%

Report 12 – Winter 2014

- Saturday Utilization 8 am to 5 pm
- 9 Available Hours per Week

Building	Room	ASF	Capacity	WRH	WRH%	Station Occupancy
----------	------	-----	----------	-----	------	-------------------

DHE	236	380.0	30.0	3.72	41.3%	26.7%
EH	235	1,054.0	40.0	4.05	45.0%	72.5%
EH	237	1,054.0	40.0	7.27	80.8%	32.5%
EH	239	1,054.0	40.0	8.72	96.9%	10.0%
PH	306	957.0	48.0	5.22	58.0%	27.1%
PH	309	925.0	49.0	3.55	39.4%	14.3%
PH	312	725.0	36.0	3.55	39.4%	33.3%
PH	320	754.0	36.0	6.22	69.1%	41.7%
SEB	130	630.0	42.0	3.72	41.3%	23.8%
SEB	164	1,134.0	70.0	2.22	24.7%	77.1%
SEB	168	1,107.0	70.0	3.22	35.8%	45.7%
SEB	185	840.0	50.0	2.22	24.7%	86.0%
SEB	378	600.0	30.0	3.72	41.3%	10.0%
SFH	367	644.0	48.0	1.00	11.1%	45.8%
WH	313	480.0	30.0	7.22	80.2%	65.4%
Totals	15	12,338	659	66		
Averages		823	44	4.4	48.6%	35.9%

FACILITY CONDITION ASSESSMENT

PLANT RENEWAL, DEFERRED PLANT RENEWAL & PLANT ADAPTATION BACKLOG

The Facilities management computerized Capital Asset Management (CAM) program is a relational database management system, containing over 1,500 projects; totaling over \$210 million. In addition to this summary report, the database is capable of producing ad-hoc reports by priority rank, building system, completed and In-process projects in the current fiscal year, and backlog category.

The objective with this document, in addition to identifying our needs, is to raise awareness of the deferred plant renewal liability, and to serve broader facilities planning as well as to set priorities. These facility condition assessments identified needs, preliminary work scope, determined preliminary costs, and prioritized facility projects for the University.

Oakland University completed facility condition assessments in 2006 for 34 campus buildings and updates the assessments of four buildings each year.

Executive Summary of 2016 & 2017 Year Projects						
System Code	Projects Category	Millions				
		2016 Projects Total	Completed Projects	In-Process Projects	New Projects added	2017 Projects Backlog
AC	Accessibility	\$ 5.70	\$ -	\$ 0.03	\$ (0.71)	\$ 4.96
CN	Controls	\$ 4.89	\$ -	\$ 0.16	\$ 0.30	\$ 5.03
EL	Electrical	\$ 19.00	\$ 1.80	\$ 0.08	\$ 2.51	\$ 19.63
EN	Energy	\$ 4.87	\$ 14.40	\$ 1.19	\$ 15.16	\$ 4.44
ES	Exterior System	\$ 13.75	\$ 0.52	\$ 0.20	\$ 0.98	\$ 14.00
FS	Fire/Life Safety	\$ 17.02	\$ -	\$ 0.03	\$ 0.59	\$ 17.58
HE	Health	\$ 0.95	\$ 0.07	\$ -	\$ 0.10	\$ 0.98
HT	High Temp / Hot Water	\$ 9.55	\$ 0.05	\$ 0.22	\$ 0.75	\$ 10.03
HV	HVAC	\$ 42.17	\$ 12.88	\$ 0.57	\$ 9.07	\$ 37.79
IS	Interior System	\$ 31.91	\$ 0.99	\$ 8.35	\$ 13.29	\$ 35.86
IT	Information Technology	\$ 19.88	\$ 3.38	\$ -	\$ 3.81	\$ 20.31
PL	Plumbing	\$ 12.61	\$ -	\$ 0.08	\$ (4.09)	\$ 8.44
RF	Roofing	\$ 4.70	\$ 0.31	\$ -	\$ 0.18	\$ 4.56
RW	Roads / Walks / Parking Lots	\$ 3.87	\$ 8.09	\$ -	\$ 6.35	\$ 2.13
SI	Site	\$ 1.36	\$ 0.36	\$ 0.81	\$ 0.88	\$ 1.06
SS	Security Systems	\$ 2.68	\$ 0.91	\$ 0.11	\$ (0.31)	\$ 1.35
SW	Storm Water	\$ 17.64	\$ 0.03	\$ 0.10	\$ 0.71	\$ 18.22
VT	Elevator	\$ 3.59	\$ -	\$ 0.05	\$ 0.17	\$ 3.71
	Total	\$ 216.13	\$ 43.80	\$ 11.97	\$ 49.75	\$ 210.11
	NET CHANGE FROM PREVIOUS YEAR					\$ (6.02)

Remarks: Facility Management continually checks the validity of projects in the database and eliminates those assessed as not viable. The total net change for the project backlog (\$6.02 M) is due to the completion the projects.

* Elimination of non-viable projects under that category

DEFINITIONS

Capital Asset Management is a systematic approach to renewing the University's capital assets through planned:

Plant Renewal

Deferred Plant Renewal

Plant Adaptation

These terms have been formally defined by the National Association of College and University Business Officers (NACUBO) as follows:

Plant Renewal

"...a systematic approach to planning and budgeting for known future cyclical renewal and replacement requirements that extend the (present) life and retain the usable condition of campus facilities and (building) systems ... not normally contained in the annual operating budget. ..." (NACUBO). Cyclical renewals typically exceed five year cycles and include such items as roof replacement, electrical switchgear, and HVAC system replacement. These expenditures keep the physical plant and related infrastructure in reliable operating condition for its present use.

Deferred Plant Renewal

"... encompasses measures that are not carried out because of underfunding in the budgeting process or perceived low priority..." (NACUBO). This includes actual projects, from the prior or current years, not included in the routine maintenance work. These projects represent "Postponed Work" that was deferred because total costs exceed current budget, or projects that are of a "low priority" that present a minimal return on investment. Also included in the Deferred Plant Renewal project list are those projects that were shifted because funds were re-allocated to address emergencies that have no other funding source.

Plant Adaptation

"...improvements are driven by institutional program changes ..." (NACUBO). This involves a programmatic process to plan and fund for projects that will be required due to an evolving use of the institution (e.g., changes in academic disciplines, shifting expectations, supporting institutional mission, etc.), or changing standards (e.g., campus master plans, architectural standards, etc.). These expenditures are over and above normal maintenance, and are not typically contained in the annual operating budget.

FACILITY CONDITION ASSESMENT RANKING

PRIORITY 1

Current Critical (immediate or current year)

Projects in this category require immediate action to:

- Return a facility to normal operation
- Stop accelerated deterioration
- Correct a cited safety hazard
- Any other funded projects require immediate action or construction

PRIORITY 2

Potentially Critical (within one year)

Projects in this category, if not corrected expeditiously, will become critical within a year. Situations in this category include:

- Intermittent interruptions
- Rapid deterioration
- Potential safety hazard

PRIORITY 3

Necessary – Not Yet Critical (within years two – five)

Projects in this category include conditions requiring prompt attention to preclude predictable deterioration or potential down time and associated higher costs if deferred further.

PRIORITY 4

Recommended (within years six – ten)

Projects in this category include items that represent a sensible improvement to existing conditions. These are not required for the most basic function of a facility; however, Priority 4 projects will either improve overall usability and/or reduce long-term maintenance.

PRIORITY 5

Recommended (beyond year ten)

Projects in this category may not improve overall usability and/or reduce long-term maintenance; however, they provide an economic payback that would not otherwise be present. Projects in this category may represent to upgrade buildings with current codes during major renovation projects. Projects in this category may also represent non-time based improvement, upgrade, or recommendation.

SOURCE: Association of Higher Education Facilities Officers (APPA)

ABBREVIATIONS

CAMPUS SYSTEM - Accessibility (AC)
 Controls (CN)
 Electrical (EL)
 Energy Management (EN)
 Exterior Structure (ES)
 Fire/Life Safety (FS)
 Health (HE)
 High Temperature / Heat Water (HT)
 HVAC (HV)
 Information Technology (IT)
 Interior / Finish System (IS)
 Plumbing (PL)
 Roofing (RF)
 Roads, Walks, Parking Lots (RW)
 Site (SI)
 Vertical Transportation (VT)
 Security Systems (SS)
 Storm Water (SW)

CATEGORY - Plant Renewal (PR)
 Deferred Plant Renewal (DPR)
 Plant Adaptation (PA)

FACILITIES CONDITION NEEDS INDEX (FCNI) Facility Condition Needs Index provides a relative measure for comparing one building (or group of buildings) to another. The index is a simple calculation, derived by dividing the total project costs (for the ten-year window) by the total facility replacement cost (FRC). When applying the index as an evaluation tool, the lower the number, the better the facility condition. It should also be noted that this is an index, not a percentage. It can (and often does in the case of historic facilities) exceed 1.00.

Facility Condition Needs Index

Individual Building FCNI Range	Condition Description
0.01 – 0.05	Excellent condition, typically new construction
0.06 – 0.15	Good condition, renovations occur on schedule
0.16 – 0.30	Fair condition, in need of normal renovation
0.31 – 0.40	Below average condition, major renovation required
0.41 – 0.59	Poor condition, gut / renovation indicated
0.60 and above	Complete facility replacement indicated

FACILITIES REPLACEMENT COST (FRC) is reported as the total replacement cost for the building or structure and its contents or fixed assets. As an example, the FRC for student housing includes the replacement cost for the building and all the fixtures within each room. Likewise, the FRC for a central heating plant would include the cost of the structure and the boilers, generators and other equipment contained within.

Executive Summary
All Campus Buildings – Facility Condition Assessment

No.	Building Code	Building Name	Use	Year Built	Square Feet	Facility Replacement Cost	Project Costs	FCNI Total	Benchmark Per APPA
1	AD	Athletic Dome	AUX	2014	110,800	\$5,352,431	\$11	0.00	Excellent
2	ANI	Anibal House	HS	1962	20,487	\$4,265,512	\$1,533,972	0.36	Below Average
3	AVN	Ann V. Nicholson Apartments	HS	1998	181,291	\$23,887,100	\$332,338	0.01	Excellent
4	BB	Belgian Barn	AUX	1935	9,324	\$774,999	\$245,167	0.32	Below Average
5	BGM	Building Grounds and Maintenance Bldg.	UNIV	1994	14,400	\$1,493,008	\$632,126	0.42	Poor Condition
6	BRS	Biomedical Research Support Facility	UNIV	1999	28,277	\$5,519,810	\$850,805	0.15	Good Condition
7	CAS	College of Arts & Science Annex	AD	1987	4,084	\$318,165	\$203,228	0.64	Complete Replacement
8	CCC	Chicken Coop Center *	AUX	1930	8,404	\$787,418	\$119,540	0.15	Good Condition
9	CHP	Central Heating Plant	UNIV	1974	16,833	\$25,990,200	\$1,966,688	0.08	Good Condition
10	DH	Dodge Hall	AD	1968	151,204	\$48,236,916	\$16,223,124	0.34	Below Average
11	EC	Engineering Center	AD	2014	134,286	\$67,059,898	\$10	0.00	Excellent
12	ECMB	East Campus & Misc. Buildings	AUX	N/A	86,664	\$22,978,365	\$3,598,329	0.16	Fair Condition
13	EH	Elliott Hall	AD	2000	74,582	\$17,150,369	\$2,787,280	0.16	Fair Condition
14	ET	Elliott Tower	UNIV	2014	950	\$6,958,160	\$10	0.00	Excellent
15	FM	Facilities Management	UNIV	2014	7,800	\$1,873,351	\$150,000	0.08	Good Condition
16	FTZ	Fitzgerald House	HS	1961	20,610	\$4,291,121	\$1,443,026	0.34	Below Average
17	GAT	Gatehouse at MBH	UNIV	1929	2,032	\$1,002,689	\$332,126	0.33	Below Average
18	GHC	Graham Health Center	UNIV	1970	13,161	\$2,361,716	\$888,021	0.38	Below Average
19	GLC	Golf & Learning Center	AUX	1914	6,038	\$1,165,336	\$2,095,921	1.80	Complete Replacement
20	GLF	Golf Courses	AUX	N/A	0	\$25,733,381	\$9,206,509	0.36	Below Average
21	GP	Golf Pavilion	AUX	2014	5,450	\$1,391,632	\$10	0.00	Excellent
22	GRN	Greenhouse *	UNIV	1917	3,630	\$700,591	\$965,410	1.38	Complete Replacement
23	GTM	George T. Matthews Apartments	HS	1982	47,464	\$8,138,776	\$1,891,602	0.23	Fair Condition
24	HAM	Hamlin Hall	HS	1968	143,872	\$37,362,454	\$6,351,474	0.17	Fair Condition
25	HH	Hannah Hall	AD	1961	89,418	\$43,814,984	\$16,433,657	0.38	Below Average
26	HHB	Human Health Building	AD	2012	172,825	\$64,087,415	\$29,528	0.00	Excellent
27	HIL	Hill House	HS	1964	42,522	\$11,042,638	\$6,998,734	0.63	Complete Replacement
28	JDH	John Dodge House	AD	1880	10,696	\$2,075,770	\$627,349	0.30	Fair Condition
29	KL	Kresge Library	AD	1961	164,522	\$31,272,675	\$5,075,583	0.16	Fair Condition
30	MBH	Meadow Brook Hall	AUX	1929	78,002	\$51,466,762	\$10,169,183	0.20	Fair Condition
31	MC	Main Campus	UNIV	N/A	0	\$128,666,904	\$22,708,127	0.18	Fair Condition
32	MCMB	Main Campus Misc.	AUX	1960	25,978	\$4,742,405	\$215,895	0.05	Excellent
33	MSC	Mathematics & Science Center	AD	1997	165,494	\$60,081,231	\$6,103,830	0.10	Good Condition
34	NFH	North Foundation Hall	AD	1959	67,691	\$26,242,154	\$7,225,867	0.28	Fair Condition
35	OC	Oakland Center	AUX	1959	146,693	\$27,407,210	\$5,778,372	0.21	Fair Condition
36	ODH	O'Dowd Hall	AD	1982	105,000	\$42,769,911	\$9,571,650	0.22	Fair Condition
37	OIT	O'Dowd Hall IT Network Building	UNIV	2011	822	\$2,330,150	\$10	0.00	Excellent
38	OUI	O.U. INCubator Office	UNIV	1983	11,385	\$2,073,283	\$469,399	0.23	Fair Condition
39	OVH	Oak View Hill	HS	2014	164,724	\$32,061,061	\$10	0.00	Excellent
40	P32	Parking Structure	UNIV	2014	381,782	\$21,686,080	\$10	0.00	Excellent

* Historical Buildings

Executive Summary
All Campus Buildings – Facility Condition Assessment

41	PH	Pawley Hall	AD	2002	132,406	\$33,364,087	\$3,943,380	0.12	Good Condition
42	PRY	Pryale Hall	AD	1963	20,829	\$4,429,895	\$1,993,285	0.45	Poor Condition
43	PS1	Parking Structure	UNIV	2002	179,820	\$11,767,875	\$78,042	0.01	Excellent
44	PSS	Police and Support Services	UNIV	1976	26,444	\$4,855,385	\$1,036,701	0.21	Fair Condition
45	RAC	Student Recreation and Athletic Center	UNIV	1998	253,494	\$48,521,607	\$3,264,429	0.07	Good Condition
46	SFH	South Foundation Hall	AD	1959	55,041	\$11,706,075	\$4,660,193	0.40	Below Average
47	SGP	O.U. INC. Shotwell Gustafson Pavilion *	AUX	1929	25,850	\$4,989,059	\$1,056,578	0.21	Fair Condition
48	SS	Spenser Substation	UNIV	2003	14,769	\$2,850,422	\$90,147	0.03	Excellent
49	SSC	Steve Sharf Clubhouse	AUX	2011	9,900	\$3,943,678	\$115,587	0.03	Excellent
50	SST	Sunset Terrace *	UNIV	1952	12,587	\$2,927,961	\$1,698,217	0.58	Poor Condition
51	UF	Upper Fields Support	AUX	2014	2,467	\$487,085	\$10	0.00	Excellent
52	VAR	Varner Hall	AD	1970	119,939	\$39,857,076	\$14,645,604	0.37	Below Average
53	VBH	Vandenberg Hall	HS	1967	178,321	\$46,308,596	\$7,600,704	0.16	Fair Condition
54	VWH	Van Wagner House	HS	1965	43,305	\$11,245,976	\$6,535,929	0.58	Poor Condition
55	WH	Wilson Hall and Meadow Brook Theatre	AD	1967	98,153	\$40,139,171	\$20,165,462	0.50	Poor Condition

Grand Totals:					3,892,522	\$1,134,007,981	\$210,108,201	0.19	Fair Condition
----------------------	--	--	--	--	-----------	-----------------	---------------	------	----------------

NOTE: FRC exclude furnishing and furniture cost.

* Historical Buildings

	\$599,138,203
--	---------------

Total Cost Per Square Foot for all Campus Physical Assets	\$291.33
---	----------

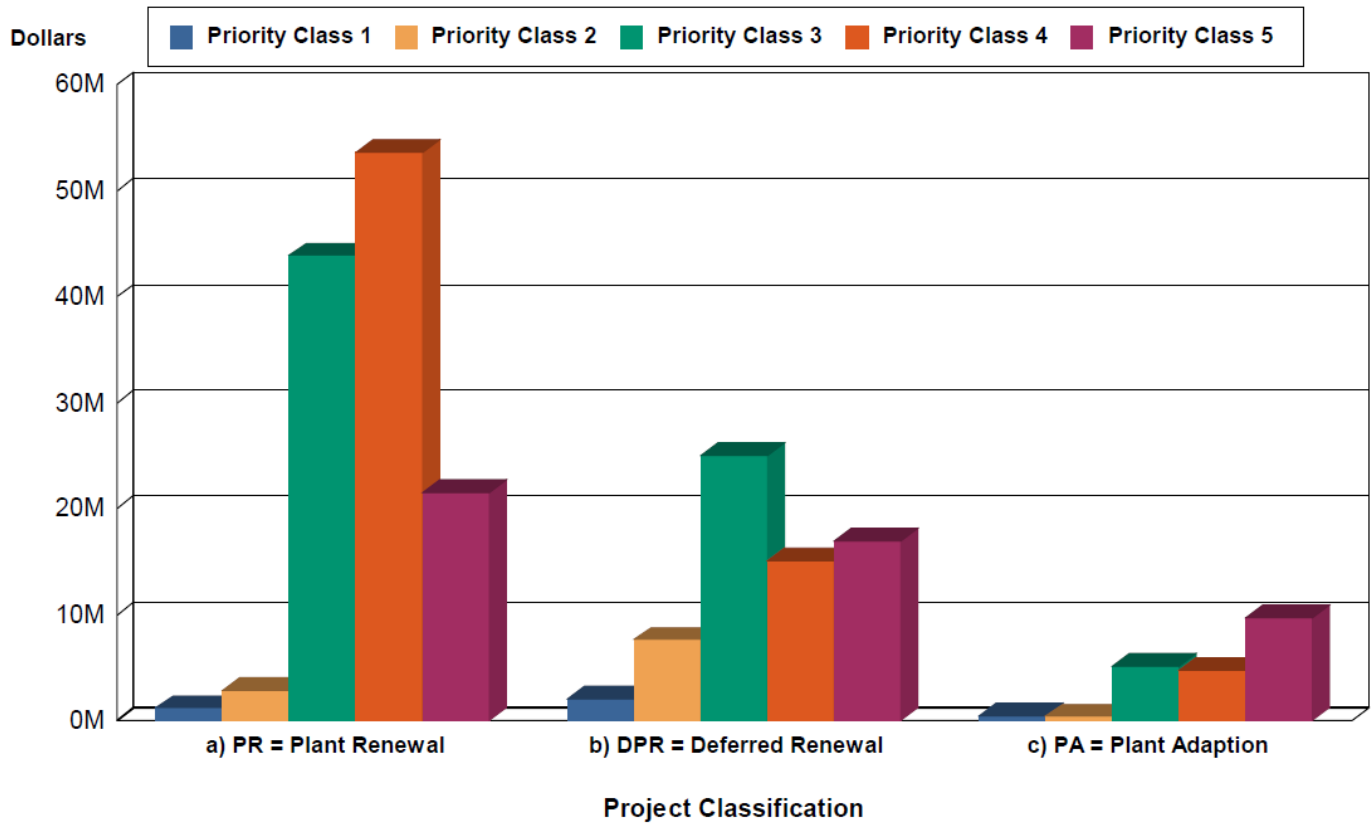
Total Cost Per Square Foot for all Campus Projects	53.98
--	-------

**Detailed Project Summary
Facility Condition Analysis
Project Class By Priority Class**

Project Class	Priority Class					Subtotal
	1	2	3	4	5	
a) PR = Plant Renewal	\$ 1,319,443	\$ 2,840,072	\$ 43,882,882	\$ 53,637,895	\$ 21,502,070	\$ 123,182,362
b) DPR = Deferred Renewal	\$ 2,074,191	\$ 7,605,776	\$ 25,029,017	\$ 15,075,122	\$ 16,789,695	\$ 66,573,801
c) PA = Plant Adaption	\$ 438,669	\$ 359,275	\$ 5,167,405	\$ 4,691,500	\$ 9,695,189	\$ 20,352,038
TOTALS	\$ 3,832,303	\$ 10,805,123	\$ 74,079,304	\$ 73,404,517	\$ 47,986,954	\$ 210,108,201

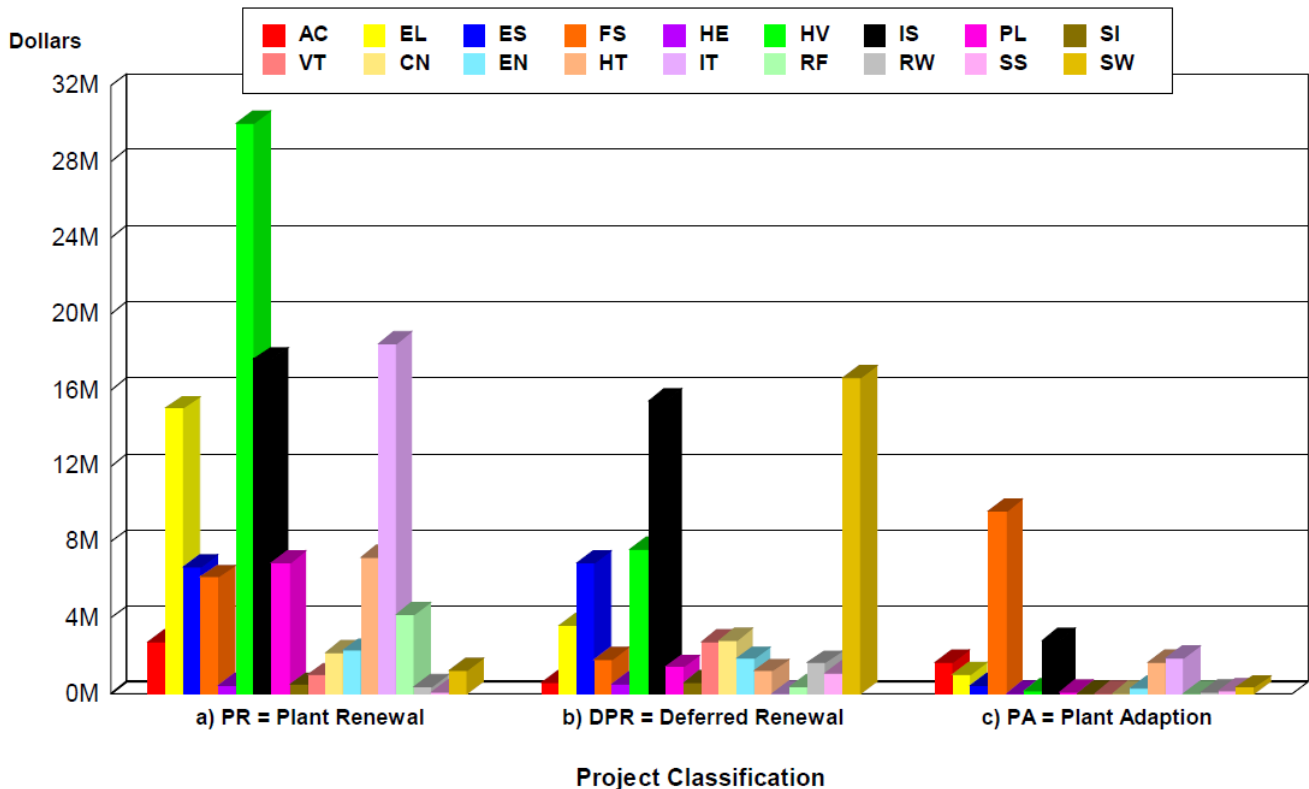
**Detailed Project Summary
Facility Condition Analysis
Project Class By Priority Class**

Project Class	Priority Class					Subtotal
	1	2	3	4	5	
a) PR = Plant Renewal	\$1,319,443	\$2,840,072	\$43,882,882	\$53,637,895	\$21,502,070	\$123,182,362
b) DPR = Deferred Renewal	\$2,074,191	\$7,605,776	\$25,029,017	\$15,075,122	\$16,789,695	\$66,573,801
c) PA = Plant Adaption	\$38,669	\$359,275	\$5,167,405	\$4,691,500	\$9,695,189	\$20,352,038
TOTALS	\$3,832,303	\$10,805,123	\$74,079,304	\$73,404,517	\$47,986,954	\$210,108,201



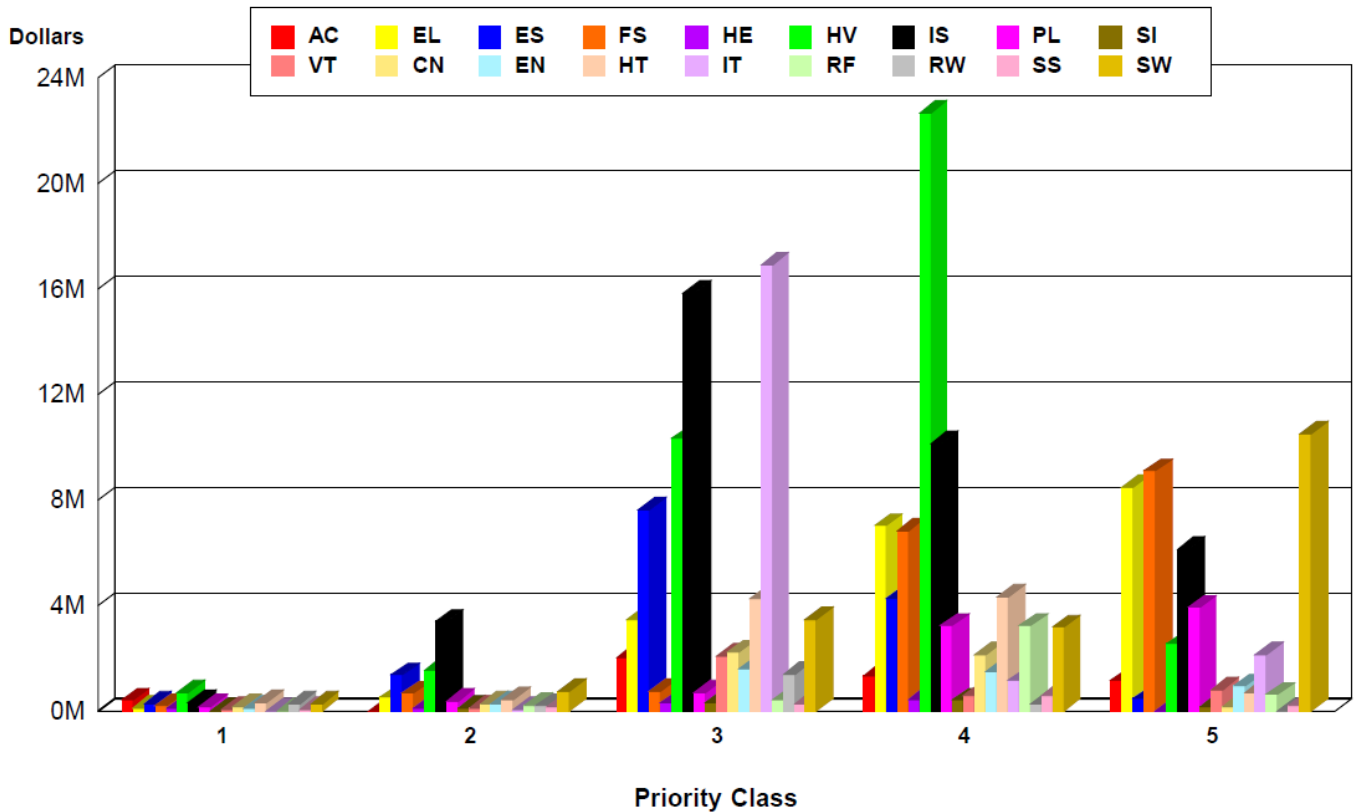
Detailed Project Totals
 Facility Condition Assessment
 System Code by Project Class
 All Buildings

System Code	System Description	Project Classes			Subtotal	%
		PR= Plant Renewal	DPR = Deferred Renewal	PA = Plant Adaption		
AC	ACCESSIBILITY	2,720,506	576,008	1,661,879	\$4,958,393	2.36%
CN	CONTROLS	2,171,568	2,830,043	31,924	\$5,033,536	2.40%
EL	ELECTRICAL	15,014,430	3,576,920	1,043,264	\$19,634,614	9.35%
EN	ENERGY	2,267,318	1,855,493	316,128	\$4,438,939	2.11%
ES	EXTERIOR	6,691,353	6,879,663	432,017	\$14,003,032	6.66%
FS	FIRE/LIFE SAFETY	6,146,695	1,725,214	9,622,078	\$17,493,987	8.33%
HE	HEALTH	453,770	518,156	10,573	\$982,498	0.47%
HT	HIGH TEMP/HEAT WATER	7,228,172	1,197,375	1,648,007	\$10,073,553	4.79%
HV	HVAC	30,167,540	7,608,677	143,401	\$37,919,618	18.05%
IS	INTERIOR/FINISH SYS.	17,611,023	15,424,675	2,827,755	\$35,863,452	17.07%
IT	INFORMATION TECHNOLOGY	18,423,404	23,128	1,865,019	\$20,311,550	9.67%
PL	PLUMBING	6,918,937	1,327,185	112,677	\$8,358,798	3.98%
RF	ROOFING	4,186,991	374,952	0	\$4,561,944	2.17%
RW	ROAD/WALKS/PARKING LOT	395,186	1,636,534	100,000	\$2,131,720	1.01%
SI	SITE	477,737	585,041	0	\$1,062,779	0.51%
SS	SECURITY SYSTEMS	80,286	1,087,748	178,988	\$1,347,023	0.64%
SW	STORM WATER	1,251,553	16,620,961	351,639	\$18,224,153	8.67%
VT	VERT. TRANSPORTATION	975,893	2,726,028	6,691	\$3,708,611	1.77%
TOTALS		\$123,182,362	\$66,573,801	\$20,352,038	\$210,108,201	100.00%



Detailed Project Totals
 Facility Condition Assessment
 System Code by Priority Class
 All Buildings

System Code	System Description	Priority Classes					Subtotal
		1	2	3	4	5	
		FY 2017	FY 2018	FY 2019-2022	FY 2023-2026	FY 2027+	
AC	ACCESSIBILITY	409,598	29,081	2,026,288	1,333,362	1,160,065	\$ 4,958,393
CN	CONTROLS	184,503	274,142	2,229,612	2,160,173	185,106	\$ 5,033,536
EL	ELECTRICAL	127,423	519,997	3,475,958	7,026,261	8,484,975	\$ 19,634,614
EN	ENERGY	130,867	266,328	1,578,642	1,521,021	942,082	\$ 4,438,939
ES	EXTERIOR	266,856	1,374,359	7,649,231	4,244,629	467,957	\$ 14,003,032
FS	FIRE/LIFE SAFETY	201,642	677,863	763,676	6,837,705	9,013,101	\$ 17,493,986
HE	HEALTH	101,467	133,731	301,467	435,261	10,573	\$ 982,498
HT	HIGH TEMP/HEAT WATER	317,592	444,629	4,245,604	4,373,056	692,673	\$ 10,073,554
HV	HVAC	834,080	1,556,587	10,323,123	22,656,554	2,549,273	\$ 37,919,617
IS	INTERIOR/FINISH SYS.	347,107	3,402,191	15,845,842	10,135,647	6,132,666	\$ 35,863,452
IT	INFORMATION TECHNOLOGY	5,218	74,476	16,923,559	1,153,567	2,154,729	\$ 20,311,550
PL	PLUMBING	188,752	372,320	717,347	3,232,854	3,931,911	\$ 8,443,184
RF	ROOFING	25,376	246,513	411,764	3,246,705	631,584	\$ 4,561,944
RW	ROAD/WALKS/PARKING LOT	268,733	207,195	1,384,133	271,658	0	\$ 2,131,720
SI	SITE	14,354	127,809	344,699	415,928	159,988	\$ 1,062,779
SS	SECURITY SYSTEMS	80,286	189,988	269,578	593,427	213,742	\$ 1,347,023
SW	STORM WATER	271,353	777,331	3,478,891	3,184,171	10,512,407	\$ 18,224,153
VT	VERT. TRANSPORTATION	57,096	130,583	2,109,888	582,538	828,507	\$ 3,708,611
TOTALS		\$ 3,832,303	\$ 10,805,123	\$ 74,079,304	\$ 73,404,517	\$ 47,986,954	\$ 210,108,201



V. Implementation Plan

State Funding Request

In the future, as additional state projects are considered, Oakland University has need for the following based on program growth, opportunity and State needs:

South Foundation Hall Renovation and Expansion - Student Success Center

Oakland University's Capital Outlay Project proposal for 2018 is the transformation of South Foundation Hall, from an old core classroom building into a state-of-the-art Student Success Center featuring the latest technology-equipped teaching and learning classrooms and collaboration spaces, targeted critical academic support service for first and second year students and maximum engagement between students and faculty teaching foundational First and Second year courses. South Foundation Hall, constructed in 1959, is one of the oldest building on campus and in desperate need of renovation. The requested project would renovate and construct an addition to the existing building and will house classrooms suited for the critical classes that are required for all freshman and sophomores, including writing, communication, math, and public speaking. The classrooms and other learning spaces would be configured to facilitate engaged learning with flexible layouts and collaborative furniture. We would also include open collaboration areas where students can continue their work and faculty and advisors could hold open sessions or simply engage with students. Students would be able to receive writing and math supplemental assistance, advising, and consultation with faculty in the same building. Making such services convenient and connected to the foundation courses will create a supportive community approach to student learning in the critical first and second year, leading toward their success in a Bachelor's degree program.

University Funded Priorities

North Foundation Hall data center renovation (funded and complete)

The renovation of, and upgrade to, the IT data center in North Foundation Hall will provide improved network efficiency and critical system redundancy.

Combined Heating and Power Co-Generation Plant (funded via a public private partnership)

Construction started in May, 2015 and is now operational. The project is completed and is expected to reduce Oakland's energy costs, improve efficiency and power reliability, reduce CO2 emissions, and provide education opportunities for students.

Security Enhancements - Campus (funded and complete)

Various campus wide security enhancements including upgrades to the Blue Phone emergency phone system, C-Pass card access system, and greatly expands the internal and external security camera coverage on campus.

Athletic Facility Renovations (funded and complete)

Various upgrades within the O'Rena, including technology upgrades to the multimedia score board, sound system, and lighting systems, as well as the installation of a new competition playing surface.

Elliott School of Business Administration Expansion and Renovation

The expansion and renovation of the School of Business Administration Building will double the square footage of the current facility (Elliott Hall). Funded through design only.

Undergraduate Student Housing (funded)

The Southern Campus Housing Project construction is underway. The project consists of 750 additional beds, a new dining facility and classrooms to support the growing demand for on campus student housing. Expanding housing is in keeping with the campus master plan goal of over 4,000 residential students.

Oakland Center Expansion (funded)

Expansion of the Oakland Center to accommodate additional dining facilities, student study areas, conference rooms, and other needed upgrades.

Galloway Creek Ecosystem Restoration Project (externally funded)

Improvements to the regional drainage system, which traverses the campus.

Anibal House/Fitzgerald House Renovation (funded)

Convert outdated housing facilities into administrative space to support student success. Further infrastructure improvements include replacement of the plumbing systems in Hamlin Hall North (under construction), and the replacement of the pedestrian bridge at Hanna Hall (complete and operational).

Future Projects Under Consideration

The recently completed Comprehensive Campus Master Plan has identified short, midterm and long range opportunities for internal initiatives as well as external development opportunities. These include additional student housing, classroom and administrative facilities, athletics and recreation facilities, and performing arts center, among others.

Plant Renewal / Deferred Plant Renewal

As previously noted, Plant Renewal and Deferred Plant Renewal projects total \$190 million of the \$210 million Facility Condition Analysis. The current average annual investment is approximately \$2.0 million from General Fund budgets and maintenance endowments; approximately \$3.5 million from Auxiliaries Maintenance Reserves; and \$0.9 million from University Technology Services budgets.