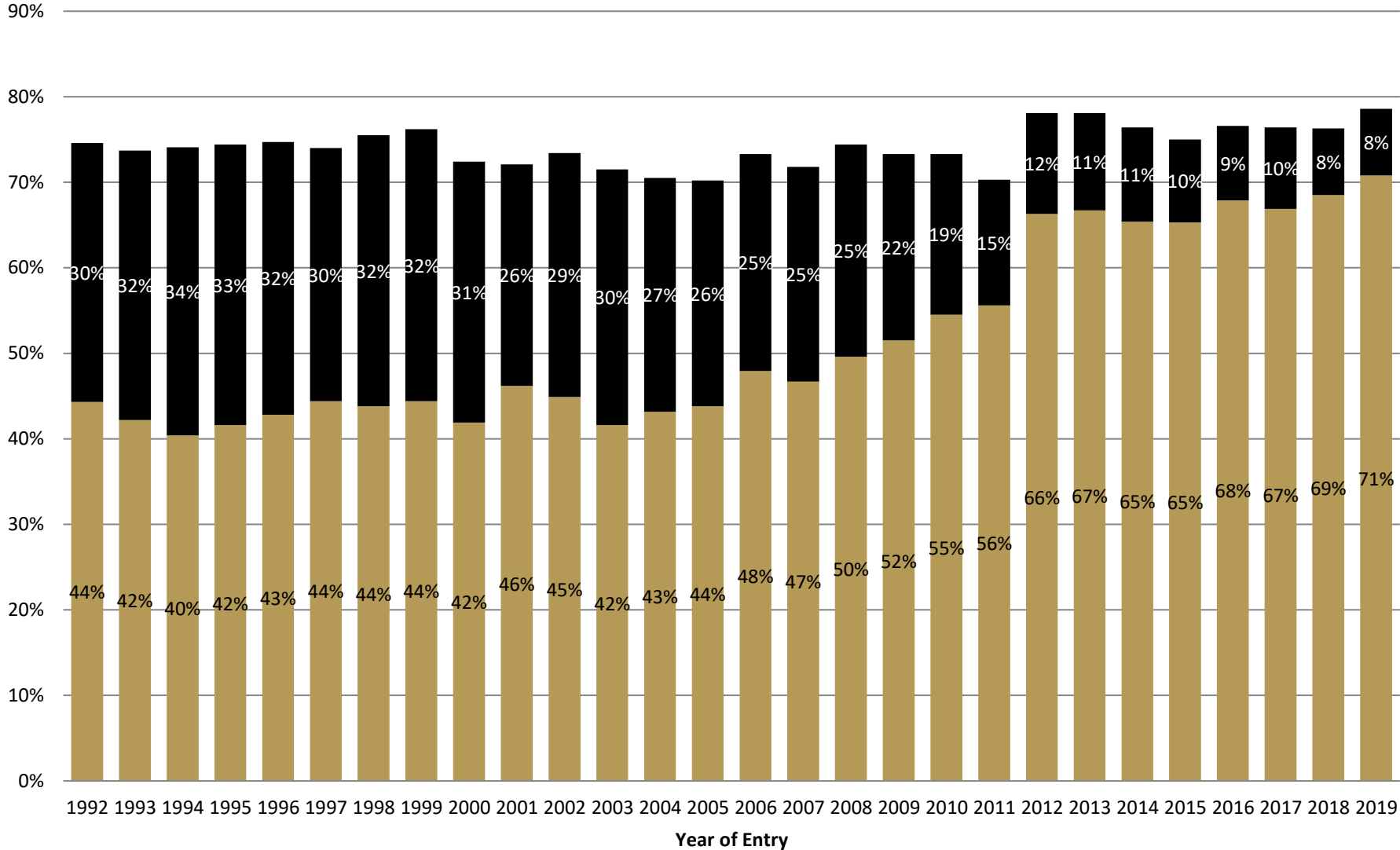


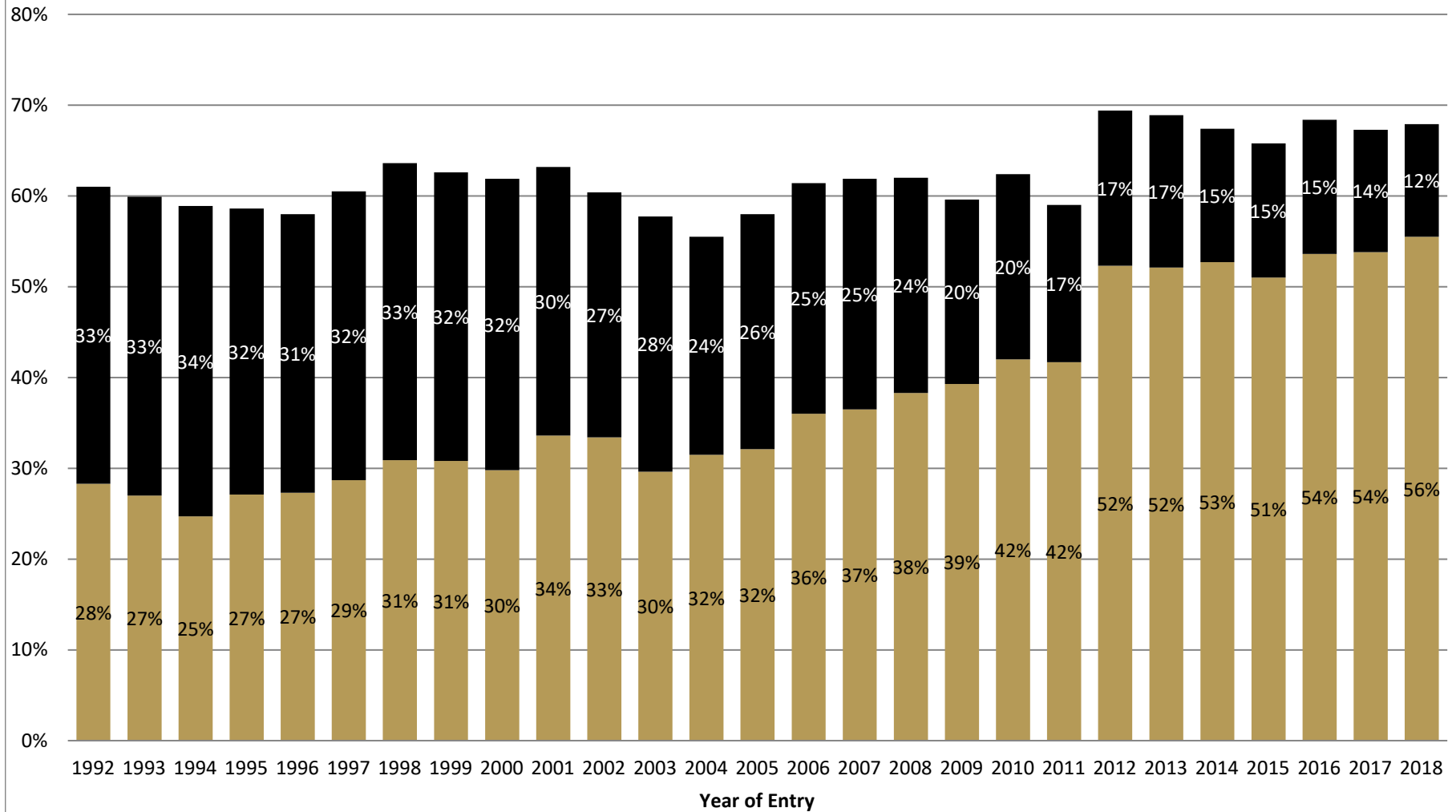
First Year Retention Rates

(For First-Time Full Time Students)



■ Retained and On Track to Graduate in 4 Years ■ Retained, But Not On Track to Graduate in 4 Years

Second Year Retention Rates (For First-Time Full Time Students)



Retained and On Track to Graduate in 4 Years
 Retained, But Not On Track to Graduate in 4 Years

First Year Retention Rates

Year of Entry	Retained, But Not On Track to Graduate in 4 Years	Retained and On Track to Graduate in 4 Years	Total Retained
1992	30%	44%	75%
1993	32%	42%	74%
1994	34%	40%	74%
1995	33%	42%	74%
1996	32%	43%	75%
1997	30%	44%	74%
1998	32%	44%	76%
1999	32%	44%	76%
2000	31%	42%	72%
2001	26%	46%	72%
2002	29%	45%	73%
2003	30%	42%	72%
2004	27%	43%	71%
2005	26%	44%	70%
2006	25%	48%	73%
2007	25%	47%	72%
2008	25%	50%	74%
2009	22%	52%	73%
2010	19%	55%	73%
2011	15%	56%	70%
2012	12%	66%	78%
2013	11%	67%	78%
2014	11%	65%	76%
2015	10%	65%	75%
2016	9%	68%	77%
2017	10%	67%	76%
2018	8%	69%	76%
2019	8%	71%	79%

Second Year Retention Rates

Year of Entry	Retained, But Not On Track to Graduate in 4 Years	Retained and On Track to Graduate in 4 Years	Total Retained
1992	33%	28%	61%
1993	33%	27%	60%
1994	34%	25%	59%
1995	32%	27%	59%
1996	31%	27%	58%
1997	32%	29%	61%
1998	33%	31%	64%
1999	32%	31%	63%
2000	32%	30%	62%
2001	30%	34%	63%
2002	27%	33%	60%
2003	28%	30%	58%
2004	24%	32%	56%
2005	26%	32%	58%
2006	25%	36%	61%
2007	25%	37%	62%
2008	24%	38%	62%
2009	20%	39%	60%
2010	20%	42%	62%
2011	17%	42%	59%
2012	17%	52%	69%
2013	17%	52%	69%
2014	15%	53%	67%
2015	15%	51%	66%
2016	15%	54%	68%
2017	14%	54%	67%
2018	12%	56%	68%