

Update 10/2/13

ATTACHMENT A

OAKLAND UNIVERSITY

Fiscal Year 2015 Five-Year Capital Outlay Plan

Table of Contents

I.	Mission Statement	p. 3
II.	Instructional Programming	p. 3
	An Engaged University	p. 3
	A Leading University	p. 4
	A Growing University	p. 4
	Applied Research and Economic Development	p. 6
	Partnerships	p. 7
	Instructional Technology	p. 9
	Technological Enhancements	p. 10
	Cultural and Performing Arts	p. 11
	Community Outreach	p. 12
	Academic and Student Life Enhancements	p. 12
	Degree Programs	p. 15
III.	Staffing and Enrollment	p. 25
	Figure 1 - Faculty and Staff Full Time Equivalent	p. 25
	Figure 2 - Student Credit Hours	p. 26
	Figure 3 - Degrees Awarded by Program	p. 27
	Figure 4 - Enrollment Trends	p. 28
	Figure 5 - Enrollment Projections	p. 29
	Figure 6 - General Fund Sq. Feet per Student in Michigan	p. 30
	Future Staffing Needs	p. 31
	Average Class Size	p. 31
IV.	Facility Assessment	p. 31
	Utilization Rates	p. 31
	Mandated Standards	p. 31
	Functionality	p. 31
	Replacement Value of Facilities	p. 33
	Utility Systems Condition	p. 33
	Facility Infrastructure Condition	p. 34
	Land	p. 34
	Buildings Obligated to the State Building Authority	p. 34
	Classroom Utilization Reports	p. 35
	Facility Condition Assessment	p. 42
V.	Implementation Plan	p. 53
	State Funding Request	p. 53
	University Funded Priorities	p. 53
	Plant Renewal/Deferred Plant Renewal	p. 55

I. Mission Statement

“As a state-supported institution of higher education, Oakland University has a three-fold mission. It offers instructional programs of high quality that lead to degrees at the baccalaureate, master’s, and doctoral levels, as well as programs in continuing education; it advances knowledge and promotes the arts through research, scholarship, and creative activity; and it renders significant public service. In all its activities, the University strives to exemplify educational leadership in a diverse and inclusive environment.”

II. Instructional Programming

Oakland University (Oakland, University or OU) is a doctoral/research University located in Rochester, Michigan, within Oakland County. Through unique and distinctive academic experiences, Oakland is preparing students to make meaningful and substantial contributions to the workplace, academia and the community.

An Engaged University

Oakland University is the only comprehensive, doctoral-level University located in Oakland County, Michigan. Recognized as one of the country’s 83 doctoral/research universities by the Carnegie Foundation for the Advancement of Teaching, the University offers students opportunities to work directly on research projects with expert faculty.

Through a multitude of partnerships with hospitals, Fortune 500 companies, individuals, cities, government agencies and educational institutions, Oakland helps communities solve problems and build thriving, sustainable businesses. These associations reward students with internship and co-op opportunities and provide University researchers access to the latest technology tools. Oakland’s leadership with these partnerships also significantly impacts economic development efforts and commercialization opportunities in the region.

Oakland, in partnership with Beaumont Health System, opened the first M.D.-granting medical school in Oakland County with a class of 50 inaugural students in August 2011. A second class of 75 students was welcomed in August 2012. The first new medical school started in Michigan in a generation, the Oakland University William Beaumont (OUWB) School of Medicine is expected to help boost the local and regional economies by generating new jobs and attracting medical, business and academic leaders from around the world and aid in the transition from a manufacturing to a knowledge-based economy.

The medical school trains physicians to practice 21 century medicine with an emphasis on research, technology, preventive and pre-symptom medicine, treatment and management of chronic disease, and teamwork. OUWB promotes applied research “from the bench to the bedside,” assuring that scientific discoveries and new technologies are able to directly benefit patients in the most rapid timeframe possible.

Oakland has a strong undergraduate program in the basic sciences and is widely recognized for excellence in the biomedical sciences and other health care related programs. It has a School of Nursing, a School of Health Sciences, a renowned Eye Research Institute, and highly regarded programs in bioengineering, informatics and nanotechnology as well as chemical toxicology, health and environmental chemistry, medical physics and biological communication. The schools of Nursing and Health Science are now housed in the new Human Health Building, which opened in August 2012.

Oakland University's other professional schools, Business Administration, Education and Human Services, Engineering and Computer Science, and the College of Arts and Sciences, have been recognized nationally for various accomplishments.

A Leading University

Oakland is committed to providing undergraduate and graduate education marked by academic excellence, unique opportunities and beyond-the-classroom experiences in preparing future leaders, advancing research frontiers and engaging with business, educational and community partners for the benefit of the region and beyond.

Through the dedication of inspired faculty, Oakland prepares students to make meaningful and substantial contributions to society and the workplace by producing graduates who can think critically and creatively, communicate effectively, navigate and use information technology, and interact well with others.

In addition to equipping graduates with a broad base of knowledge and top-notch intellectual and experiential opportunities, Oakland is equally dedicated to the development of students in all aspects of their lives. Through a carefully thought out collection of campus life experiences, the University gives students opportunities to conduct research and participate in internship and co-op experiences.

A Growing University

Oakland is among the fastest growing public universities in the state with student enrollment projections through 2020 including:

- continued enrollment growth
- increased enrollment of minority students
- an increase in graduate students, responding to new program development, greater outreach activities and advanced technology-assisted education delivery

Over the last 13 years, the University has realized a 32 percent increase in enrollment and has added more than 65 new degree programs since 1995 to strengthen educational offerings.

Members of the Oakland University community opened their hearts and their wallets, making generous gifts to the 2012 All-University Fund Drive. A total of 674 faculty, staff and retirees

contributed \$316,266. With OU President Dr. Gary Russi's match included, the amount rose to \$471,257.

Oakland has continued to keep pace with growth by providing new and advanced academic, research and support facilities, such as the:

- Science and Engineering Building
- renovation of Hannah Hall
- Elliott Hall of Business and Information Technology
- Pawley Hall of Education and Human Services
- renovation and expansion of the Oakland Center
- renovation of O'Dowd Hall to provide additional classrooms and space for the Oakland University William Beaumont School of Medicine
- Recreation Center
- renovation and restoration at Meadow Brook Hall
- renovation and technology upgrades of South Foundation Hall
- Student Technology Center: OU Writing Center
- OU Anton/Frankel Center
- First Year Advising Center
- Human Health Building, located on the northwest corner of campus and opened in August 2012

A campus master plan accounts for expected growth and includes:

- a new parking structure which will add 1,245 parking spots
- a new Engineering Center to open in fall 2014
- a new student housing complex that will accommodate over 500 students, beginning fall 2014
- a new recreation and athletic complex to be completed in fall 2014
- new headquarters for Facilities Management
- a new home for The Honors College to be located in the new student housing complex
- infrastructure improvements
- the identification of potential building sites
- a research and development park
- a new humanities facility

Several upgrades, renovations and technological improvements were recently accomplished to various classrooms, laboratories and common areas. Primary laboratories to receive complete renovation were in chemistry, biology, physics, and art and art history – all programs which have experienced large increases in student enrollment or are key components of Oakland biomedical and health care academic offerings.

Applied Research and Economic Development

Oakland offers knowledge, resources and programs that help companies grow. With its research labs, facilities, faculty and students, the University assists companies in transforming ideas into new business developments, turning dreams into reality and giving vitality to vision. The University is committed to assisting startups and spin-offs to locate and secure technology development, business planning and capital acquisition as well as providing opportunities for the licensing of Oakland University's intellectual assets. To foster emerging discoveries, the University features several noted research centers, including the:

- OU SmartZone Business Incubator
- Fastening and Joining Research Institute (FAJRI)
- Center for Robotics and Advanced Automation
- Eye Research Institute (ERI)
- Center for Integrated Business Research and Education (CIBRE)
- Center for Biomedical Research
- Prevention Research Center
- Center for Autism Research, Education and Support (OUCARES)
- Clean Energy Research Center

OU SmartZone Business Incubators: OU INC is a SmartZone Business Incubator/Accelerator, in collaboration with the City of Rochester Hills and Michigan Economic Development Corporation, and partners with Oakland County and Automation Alley. OU INC provides entrepreneurial resources and strategic business solutions for developing business ventures and accelerates ideas to market. It fosters a healthy environment for the growth of new startup companies as well as provides support for existing entities through its facility and resources. The OU INC facility includes business resources, the Clean Energy Research Center and an Integrated Resource Center as well as access to the expertise and skills of staff, faculty, students and corporate partners.

The Macomb-OU INCubator provides entrepreneurial resources, business solutions, access to student interns and proactive support to businesses at every stage in an effort to help startups on their path to success. The goal of the incubator is to create jobs and advance the development of business with obtaining necessary financing for growth, business strategy, consultation, access to appropriate rental space, shared business services, and equipment and technology support services in the areas of defense, homeland security, advanced manufacturing and technology. It is a part of the Velocity Collaboration Center, a joint venture between Oakland University, Macomb County and the City of Sterling Heights.

Fastening and Joining Research Institute (FAJRI): A collaboration between Oakland University, the U.S. Congress, the U.S. Army Tank Automotive Research and Engineering Center (TARDEC), the National Science Foundation and Chrysler Corporation, FAJRI is an externally funded, academic, nonprofit research facility that is solely dedicated to exploring fundamental and applied research to develop and disseminate new technology for the fastening and joining of materials such as: metals, composites, polymers, and bio materials.

Center for Robotics and Advanced Automation: Funded by the National Science Foundation, the Big Three automotive companies and the Department of Defense, the center works on smart control technology with industrial and defense applications, intelligent robotics, homeland security technology, suspension systems, digital shearography, and global satellite communication technology and systems.

Eye Research Institute (ERI): This unique center of ophthalmic research collaborates with the department of ophthalmology at Beaumont Health System on research and provides a joint ophthalmology residency and fellowship program. Since 1968, ERI scientists have received more than \$50 million in support from private and federal health agencies.

Center for Biomedical Research: This center provides core facilities and pilot funding for the applied biomedical research efforts of Oakland University's life scientists. Key research includes eye diseases, chemical toxicology, medical physics and biological communication.

Partnerships

Oakland has leveraged its unique Auburn Hills/Rochester Hills/Rochester location in the heart of Michigan's technology and automotive corridor by forging strategic partnerships with hospitals, Fortune 500 and international companies, individuals, cities, government agencies, and educational institutions, from Southeast Michigan to other countries. The benefits of these associations are far reaching: students are rewarded with internship and co-op opportunities, University researchers have access to the latest technology tools, and the region benefits through new business opportunities and a stronger economy.

Community College Partnership Programs: Oakland University has partnered with area community colleges to create the first joint admissions and concurrent enrollment programs in the state of Michigan. These partnerships offer students expanded resources, tuition savings and maximum flexibility on the path to an OU bachelor's degree. Partners include Macomb Community College, Mott Community College, Oakland Community College and St. Clair County Community College.

Eugene Applebaum College of Pharmacy and Health Sciences: An alliance between Oakland University's School of Health Sciences and Wayne State University (WSU) provides Oakland's undergraduates a unique opportunity to earn a doctorate in pharmacy. Students can earn their bachelor's degree at OU taking pre-pharmacy courses. Their senior year at OU, students take pharmacy classes at WSU. Their senior year at OU is also their first year at WSU, giving students the opportunity to complete a doctoral program in seven years instead of eight, saving both time and money.

Crittenton Hospital Medical Center: Crittenton Hospital Medical Center has funded a \$2 million endowed professorship in Oakland University's School of Nursing that is changing the clinical education and training of nursing students. The nursing professorship conducts patient-focused research on the science and best practices of nursing, an area that has not received much attention to date. Students in the program conduct all of their clinical rotations at Crittenton Hospital Medical Center using the relationship-based care (RBC) model. RBC moves from an individual expert dynamic to one of engaging the patient, identifying options, relaying experiences and empowering the patient and his/her family to make the best treatment decisions.

OU Anton/Frankel Center: Oakland University expanded its reach in Macomb County with the opening of the Anton/Frankel Center (AFC) in fall 2011. With 25,422 square feet of space to house classrooms, offices for advising, student support services, faculty and staff, the AFC signals OU's continued commitment to bringing exceptional academic opportunities to the people of Macomb County. Programs offered at the AFC include bachelor's degrees in criminal justice, psychology, marketing and social work; and master's degrees in public administration and business administration.

The University of Botswana: Oakland University's Department of Counseling in the School of Education and Human Services, in partnership with the University of Botswana (UB), provides student and faculty exchanges, video conferences and partnerships in research, scholarship, teaching and service.

Israel's Max Stern Academic College: Oakland University offers global experiences for students and faculty through myriad overseas programs including a new partnership with Max Stern Academic College in Emek Yezreel, Israel. Students and faculty on both campuses will experience different cultures through research opportunities, academic coursework and student life.

Cooley Law School: Oakland University and Cooley Law School have enjoyed a successful partnership since 2002, when Cooley first offered its Juris Doctor (JD) law program on Oakland's campus. The recently opened Thomas M. Cooley Law School-Auburn Hills campus is the exclusive educational partner law school of Oakland University.

The Pawley Learning Institute: Established through a gift from Dennis Pawley, OU alumnus and former chair of the OU Board of Trustees, the Pawley Learning Institute provides instruction and research on concepts and training that improve organizational practices in business, education and public service sectors.

Applied Technology in Business: This program combines a rigorous education with hands-on training in the application of information technology in business. Students earn a scholarship along with a minor degree in Applied Technology in Business while tackling projects on-site at sponsoring organizations over the course of two years.

St. John Health Providence System at Riverview: Oakland continues to find new ways to fill Michigan's allied health professional and nursing pipeline. Through this partnership, students in the Patient Care Technician, Certified Nursing Assistant, Licensed Practical Nurse and Accelerated Second Degree Nursing programs take lecture and clinical laboratory courses at the Riverview Institute of Oakland University, the former St. John Riverview Hospital in Detroit.

Undergraduate research opportunities: More than 100 undergraduate students have earned Undergraduate Student Research Awards, working closely with faculty mentors to gain valuable hands-on research experience. The awards provide up to \$2,000 and travel opportunities to present student research results at regional, national and international conferences.

Instructional Technology

Access to user friendly instructional technology resources in the classrooms are a standard expectation of Oakland's faculty and students. All general purpose classrooms and a growing number of conference rooms and labs are equipped with enhanced instructional technology resources.

University classrooms are equipped with the following:

- Multimedia workstation containing: a PC computer hardwired to campus network; a digital document camera; an electronic whiteboard; a DVD player; an interface to plug in a user provided laptop computer or mobile display, an interface to plug in an accessory analog audio/video device; sound system; and an electronic media control system
- Ceiling mounted video/data projection system connected to the multimedia workstation
- Wireless network access
- A lecture capture system (Panopto) is also available to record classroom instruction and post recordings online for student review
- Room microphones and video cameras are currently being added

Oakland continues to expand its course offerings via distance education. The three modes of delivery include live interactive video, synchronous and asynchronous web-based learning opportunities.

The Internet is the current transmission vehicle for the University's live two-way compressed video course offerings. The ongoing development and interest in online learning courses and programs has reduced the need to utilize the more expensive live interactive video distance

learning model and thus there is less of a need to maintain high cost video conferencing appliance based systems and resources.

A software based video collaboration tool called Vidyo is also available for the University community to conduct business at a distance. These types of technologies save time and money by providing a communications tool that allows for the sharing of voice, video and content between two or more computers or mobile devices. The growth in web based learning models will continue to expand in the foreseeable future.

Oakland University supports a web-based Course Management System (CMS) solution utilizing Moodle. Moodle can be used as a full "web based" solution where no face-to-face teaching is required or as a "web supplemented" course resource that enhances the standard face-to-face classroom contact between faculty and students. Moodle offers online activities such as discussion boards, chat, quizzes, grade book, file storage and display, RSS feeds, wikis, journals, workshops, automated lessons. Moodle will also be the portal to access lecture capture recordings. We also support another separate instance of Moodle that is our e-Portfolio. It includes digital space for student career Portfolios. A third instance of Moodle is called e-Space that contains department assessment activities, research, academic committees, advising, and other miscellaneous academic activities.

Elluminate is a web-based synchronous learning, video-conferencing solution Oakland is offering where students are able to participate in live class meetings from any computer connected to the Internet. Another teaching tool is Second Life, an experimental island where several faculty meet their classes.

During the Winter 2013 term, Oakland offered 231 course sections that are fully online and approximately one third of all course sections are providing some level of web supplemented activity. Oakland also offers fifteen online degree and certificate programs.

Scantron machines, i-Clicker, and other software are also supported centrally for grading exams and processing course evaluations.

Technological Enhancements

Oakland University is dedicated to enhancing education through the use of contemporary and emerging technologies and continues to commit significant resources to technological enhancements, including:

- Complete administrative software suite.
- On-line registration.
- Extensive wired and wireless network to all classroom buildings and surroundings.
- Elliott Hall of Business and Information Technology, a \$17.5-million, 74,000-square foot, technology-rich facility.
- The Pawley Hall of Education & Human Services Building with 24 enhanced technology classrooms and an all digital video recording, playback and archive system in the School's Counseling Center.

- Interactive television and video conferencing capability to supplement instruction and administrative program activity.
- On-line web-based course offerings to students utilizing Moodle, a course management software (CMS).
- Other teaching and learning software, such as Panopto, CourseWeb, Scantron, Turnitin, Second Life, Camtasia, I-clicker, and Visual Communicator.
- A new Information Commons was developed in Kresge Library adding a significant number of computer work stations for the patrons.
- A remodel of O'Dowd Hall was completed to become the initial home of the new Oakland University William Beaumont School of Medicine, including the addition of many new technology enhancements.
- An off-site School of Nursing instructional center was developed at the St. Johns Riverview Hospital location in Detroit including the creation of 5 technology enhanced classrooms.
- Renovation of the two-story Anton/Frankel Center in Mount Clemens provides Oakland with a third Macomb County location with an additional 25,422 square feet of space. The new center will provide classrooms as well as offices for advising, student support services, faculty and staff.
- Major classroom renovation projects that included significant technology enhancement in older campus buildings continue to be a priority objective.
- A new Health and Human Building was opened providing the University community with the most up-to-date all digital classroom technology systems within all instructional spaces, a state-of-the-art Nursing SIM lab, and many technology enhancements within specialty laboratories.

Helpdesk Operations

Oakland University is moving toward a centralized Help Desk model which supports all desktop, instructional and information technology service needs throughout the Institution. The Help Desk service operation is open extended hours six days a week.

Cultural and Performing Arts

Oakland's contribution to the arts has moved beyond local boundaries to secure a place of prominence in the region. Historically, OU has had a strong performing arts program with record-high enrollment numbers.

The Department of Music, Theatre and Dance offers more than 100 student and faculty performances throughout the school year. Guests enjoy everything from musicals and intimate recitals to experimental plays and innovative dance performances. OU has earned a reputation for taking artistic risks, developing gifted artists, nurturing arts partnerships and achieving new heights of quality and professionalism.

Meadow Brook Hall is the sixth largest historic house museum in the United States and is renowned for its superb craftsmanship, architectural detailing and grand scale. Built between 1926 and 1929 as the residence of Matilda Dodge Wilson (widow of auto pioneer John

Dodge) and her second husband, lumber broker Alfred G. Wilson, the 110-room, 88,000-square-foot, Tudor-revival style mansion is complete with vast collections of original art and furnishings. The U.S. Department of the Interior last year designated The Hall a National Historic Landmark, the highest recognition for historic properties in the United States.

The Oakland University Art Gallery (OUAG), housed in the Department of Art and Art History, continues to garner critical acclaim for the quality and scope of its exhibitions. For more than 40 years, the OUAG has delivered diverse, museum-quality art to Metro Detroit audiences. From September to May, the OUAG presents up to six different exhibitions – from cutting-edge contemporary art to projects exploring historical and global themes. The gallery also offers lectures, performances, tours, special events and more. More than 16,000 visit OUAG each year to experience art and cultural programs.

Outdoor summer amphitheater Meadow Brook Music Festival hosts today's top concerts including rock, alternative, adult contemporary, pop, country, and rhythm and blues; a wine and food festival; stand-up comedians; and family entertainment.

Community Outreach

In the nearly 10 years since Oakland University initiated a formal partnership with the City of Rochester through the Rochester Downtown Development Authority (DDA), much has been accomplished with new initiatives added over time. Oakland considers Rochester its "hometown community" based on its long history with the city dating to the university's founding.

The partnership presents many opportunities for the OU community to benefit from joint educational and cultural programming. Areas of emphasis for students, faculty and alumni have included: employment, internships, research and development projects, business development assistance, community service projects, promotions and business discounts, and opportunities to showcase the arts, theatre and music to complement classroom work.

Students are involved in downtown Rochester events, including the annual Rochester Hometown Christmas Parade. Students, alumni, faculty and staff enjoy discounts at dozens of participating stores and restaurants through the OU GO card. The University also partners with the Rochester Regional Chamber of Commerce for joint programming and assistance. Oakland proudly partners with its other neighboring communities including Auburn Hills, Pontiac and Rochester Hills.

OU and the City of Pontiac have a long history together through programs such as GEAR UP (Gaining Early Awareness and Readiness for Undergraduate Programs), which helps students in the Pontiac as well as Oak Park school districts; Project Upward Bound, which helps 120 students each year finish high school and develop the social and cultural skills needed to realize their dreams and succeed in college and society; and through the Wade H. McCree Jr. Incentive Scholarship program, which assures that students who meet specific

criteria will be awarded a full-tuition scholarship to Oakland when they graduate from high school.

Oakland University-Macomb County is involved in various community service efforts, including sponsorship of and participation in Turning Point's annual fundraising event and Tara Grant Memorial Walk/Run, the annual KnowResolve Suicide Prevention Be Aware Walk, and the Let's Move Festival of the Races in downtown Mount Clemens. In addition, this year more than 50 Oakland University students and staff, including the OU Dance team, Cheer team and the Grizz, participated in the annual Macomb County Santa Parade.

Academic and Student Life Enhancements

All students should have the benefit of academic support services, especially mentoring and small learning communities, aimed at helping them make the necessary academic and social adjustments to achieve collegiate success.

OU's First Year Advising Center connects new students with university advisers, peer mentors, graduate assistants, faculty and various support services on campus to provide a more effective student experience, especially during the critical first year.

The Oakland University Trustee Academic Success (OUTAS) scholarship program is a national model for retaining and graduating a diverse group of high-achieving university students. OUTAS was established to counter the declining rates of minority retention, graduation and student performance.

The Writing Center in Kresge Library, established through a leadership gift from OU Professor Emeritus of English Joan Rosen, assists hundreds of students each year. The Writing Center provides assistance to students to develop and incorporate effective writing and communications skills in all subject areas.

Oakland's Honors College offers highly motivated students seeking a rich, valuable and challenging undergraduate education an intimate, intellectually friendly and challenging atmosphere. Small classes average 10 to 20 students and allow for more interaction between the professor and other students. The program offers a specially designed core of general education courses in art, literature, western civilization, social science, global perspectives, mathematics, logic, computer science, natural science and technology.

Oakland's Student Technology Center serves as a digital hub for the promotion, instruction and support of technology literacy. Through the center, professional system specialists, combined with undergraduate student technology mentors, provide training and support in one-on-one or group sessions to students. This support helps students become proficient in technology, complete coursework in various disciplines, conduct university-related business transactions and work-related tasks, and improve personal growth skills.

OU has more than 250 student organizations that encourage student involvement and social opportunities.

The Recreation and Athletics Center hosts a number of activities throughout the year in which students may get involved, including intramural and club sports, group exercise classes and wellness-related programs. This multi-purpose facility draws more than 5,000 participants a week for recreational sports programs, and hosts sellout crowds at men's basketball games.

New outdoor recreation and athletics facilities, scheduled for completion in fall 2014, will accommodate NCAA Division I athletic events including tennis and track and field meets, club and intramural sports competitions, and a variety of fitness and recreational activities welcoming university students, faculty, staff and community visitors.

UNDERGRADUATE DEGREE PROGRAMS

College of Arts and Sciences (102) Bachelor of Arts – CASBA (59)

2810	Anthropology
2815	Anthropology – Modified w/Concentration in Linguistics
1055	Art History
1105	Biology
1230	Chemistry
1450	Cinema Studies
2705	Communication
2715	Communication – Modified w/Concentration in Linguistics
1420	Creative Writing
2876	Criminal Justice w/ Special in Law Enforcement
2877	Criminal Justice w/ Special in Courts
2878	Criminal Justice w/ Special in Corrections/Treatments
2879	Criminal Justice w/ Special in Juvenile Justice
2880	Criminal Justice w/ Special in Info. Security and Assurance
2881	Criminal Justice w/ Special in Homeland Security
2290	Dance
1610	East Asian Studies – China
1615	East Asian Studies – Japan
3700	Economics
1405	English
1410	English – Modified w/Concentration in Linguistics
1980	French Language and Literature
1985	French – Modified
2015	German w/Concentration in German Studies
2010	German Language and Literature
2020	German – Modified
1096	Graphic Design
1505	History
1045	Independent Major
2510	International Relations
2040	Japanese Language and Literature
2045	Japanese – Modified
2735	Journalism
2060	Latin American Language and Civilization
1625	Latin American Studies
1700	Liberal Studies
1705	Linguistics
1710	Linguistics – Modified
1805	Mathematics
2205	Music
2375	Philosophy
2405	Physics
2515	Political Science
2605	Psychology
2615	Psychology – Modified w/Concentration in Linguistics
2820	Sociology
2805	Sociology/Anthropology
2825	Sociology – Modified w/Concentration in Linguistics

2830 Sociology – w/Specialization in Criminal Justice (2 + 2)
2100 Spanish Language and Literature
2110 Spanish – Modified
1070 Studio Art
1075 Studio Art – Specialization in Drawing
1090 Studio Art - Specialization in New Media
1080 Studio Art – Specialization in Painting
1085 Studio Art – Specialization in Photography
2294 Theatre
2130 Two Modern Languages
2870 Writing and Rhetoric
2865 Women and Gender Studies

Bachelor of Fine Arts – BFA (4)

2283 Acting
2290 Dance
2285 Musical Theatre
2296 Theatre Design & Technology

Bachelor of Music – BM (7)

2270 Choral/General Music Education
2279 Choral/General Music Education/Performance
2272 Instrumental/General Music Education
2278 Instrumental/General Musical Education Performance
2265 Music – Instrumental Performance
2245 Music – Piano Performance
2240 Music – Vocal Performance

Bachelor of Science – CASBS (12)

1835 Applied Statistics
1225 Biochemistry
1105 Biology
1125 Biology – Modified w/Specialization in Anatomy
1120 Biology – Modified w/Specialization in Cell-Molecular Biology
1130 Biology – Modified w/Specialization in Microbiology
Biomedical Sciences
1905 Actuarial Science
1230 Chemistry
1805 Mathematics
2420 Medical Physics
2405 Physics
2530 Public Administration and Public Policy

Bachelor of Science – ENVSCI (3)

1252 Environmental Science/Specialization Sustainability and Res. Mgt.
1257 Environmental Science/Specialization in Environmental Health
1266 Environmental Science

Bachelor of Social Work – BSW (1)

2860 Social Work

K-12 Educational Programs (10)

1992 French w/K-12 Certification
2027 German w/K-12 Certification

- 2047 Japanese w/K-12 Certification
- 2122 Spanish w/K-12 Certification
- 1071 Studio Art/K-12
- 1076 Studio Art – w/K-12 Specialization in Drawing
- 1091 Studio Art – w/K-12 Specialization in New Media
- 1081 Studio Art – w/K-12 Specialization in Painting
- 1086 Studio Art – w/K-12 Specialization in Photography
- 1093 Studio Art – w/K-12 Specialization in Graphic Design

Secondary Education Programs (6)

- 1140 Biology w/Secondary
- 1240 Chemistry w/Secondary
- 1430 English w/Secondary
- 1515 History w/Secondary
- 1825 Mathematics w/Secondary
- 2430 Physics w/Secondary

School of Business Administration (9)

Bachelor of Science – SBABS (9)

- 3100 Accounting
- 3705 Business Economics
- 3700 Economics
- 3200 Finance
- 3300 General Management
- 3400 Human Resource Management
- 3500 Management Information Systems
- 3600 Marketing
- 3806 Operations Management

School of Education and Human Services (2)

Bachelor of Science (2)

- 4120 Elementary Education
- 4320 Human Resource Development

School of Engineering and Computer Science (6)

Bachelor of Science (2)

- 5020 Computer Science
- 5070 Information Technology

Bachelor of Science in Engineering (4)

- 5120 Computer Engineering
- 5140 Electrical Engineering
- 5185 Industrial & Systems Engineering
- 5160 Mechanical Engineering

School of Health Sciences (11)

Bachelor of Science (11)

- 6070 Applied Health Sciences
- 6161 Biomedical Diagnostic and Therapeutic Sciences
- 6020 Health Sciences
- 6167 BDTS: Medical Laboratory Science
- 6162 BDTS: Cytotechnology
- 6163 BDTS: Histotechnology
- 6165 BDTS: Nuclear Medical Technology
- 6166 BDTS: Radiation Therapy
- 6168 BDTS: Radiologic Technology
- 6041 Occupational Safety and Health

6050 Wellness, Health Promotion, and Injury Prevention

School of Nursing (2)

Bachelor of Science in Nursing (2)

7020 Nursing

7040 Nursing (Completion Sequence)

University Programs (1)

Bachelor of Integrative Studies (1)

7605 Integrative Studies

**Bachelor of Science Offered Jointly between the College of Arts and Sciences
and School of Engineering and Computer Science (3)**

5050 Engineering Biology

5040 Engineering Chemistry

5060 Engineering Physics

**Bachelor of Science Offered Jointly between the College of Arts and Sciences
and School of Business Administration (1)**

1905 Actuarial Science

UNDERGRADUATE CONCENTRATIONS AND MINORS

UNDERGRADUATE CONCENTRATIONS (24)

2885 Addiction Studies

1435 American Studies

2850 Archaeology

1270 Environmental Studies

6240 Exercise Science

1995 French Studies

2016 German Studies

2887 Gerontology

6030 Health Behavioral Sciences

6073 Health Information Technology

6023 Integrative Holistic Medicine

1705 Linguistics

6071 Medical Assistant

6055 Nutrition and Health

6075 Occupational Therapy Assistant

6076 Physical Therapist Assistant

6021 Pre-Health Professional

1152 Pre-Medical Studies in Med/Den/Opt/Vet

6022 Pre-Pharmacy

6015 Pre-Physical Therapy

1150 Pre-Professional Studies in Med/Den/Opt/Vet and Physician Assistant

2856 Religious Studies

6072 Respiratory Therapy

6074 Surgical Technology

2855 Urban Studies

UNDERGRADUATE MINORS (99)

3100	Accounting
2740	Advertising
1605	African-American Studies
2810	Anthropology
1810	Applied Mathematics
4355	Applied Leadership Skills
1835	Applied Statistics
3810	Applied Technology in Business
1055	Art History
1105	Biology
1140	Biology – Secondary Teaching
2746	Broadcasting
3840	Business
1230	Chemistry
1240	Chemistry – Secondary Teaching
2889	Child Welfare
1610	East Asian Studies – China
1615	East Asian Studies – Japan
1956	Chinese Language
1955	Chinese Language and Civilization
2841	Christianity Studies
1450	Cinema Studies
2705	Communication
5020	Computer Science
5021	Computing
1420	Creative Writing
2290	Dance
2292	Dance – Secondary Teaching
3700	Economics
4351	Employment Systems and Standards
1405	English
1721	English as a Second Language
3850	Entrepreneurship
1266	Environmental Science
6240	Exercise Science
3200	Finance
1981	French Language
1980	French Language and Literature
3315	General Business
2011	German Language
2010	German Language and Literature
2016	German Studies
2025	German – Secondary Teaching
1095	Graphic Design
1505	History
1515	History – Secondary Teaching
4320	Human Resource Development
3400	Human Resources Management
3302	International Management
2510	International Relations
5070	Information Technology
2842	Islamic Studies
2037	Japanese Language
2035	Japanese Language and Civilization
2040	Japanese Language and Literature

2350 Jazz Studies
2735 Journalism
2843 Judaic Studies
1625 Latin American Studies
1705 Linguistics
3500 Management Information Systems
3600 Marketing
1805 Mathematics
1825 Mathematics – Secondary Teaching
1635 Middle Eastern Studies
2748 Multimedia
2205 Music
6055 Nutrition and Health
6041 Occupational Safety and Health
3806 Operations Management
2375 Philosophy
2405 Physics
2430 Physics – Secondary Teaching
2515 Political Science
2520 Political Science – Secondary Teaching
2605 Psychology
2742 Public Relations
2530 Public Administration and Public Policy
3800 Quantitative Methods
1631 Russian and East European Studies
2820 Sociology
1620 South Asian Studies
2101 Spanish Language
2100 Spanish Language and Literature
2120 Spanish – Secondary Teaching
1070 Studio Art
1720 Teaching English as a Second Language in Linguistics
2294 Theatre
1147 Three Science
4900 Training and Development
1146 Two Science
6050 Wellness, Health Promotion, and Injury Prevention
2865 Women and Gender Studies
2870 Writing and Rhetoric
2355 World Music

GRADUATE DEGREE PROGRAMS

Doctor of Philosophy (14)

PH1900	Applied Mathematical Sciences
PH1115	Biomedical Sciences: Biological Communication
PH1350	Biomedical Sciences: Health and Environmental Chemistry
PH2490	Biomedical Sciences: Medical Physics
PH5030	Computer Science and Informatics
PH4951	Education: Educational Leadership
PH4950	Education: Counseling
PH4952	Education: Early Childhood Education
PH5160	Mechanical Engineering
PH2305	Music Education
PH4940	Reading Education
PH5180	Systems Engineering
PH5540	Electrical and Computer Engineering
PH2605	Psychology

Doctor of Physical Therapy (2)

DP6220
DP6221

Doctor of Science in Physical Therapy (1)

DS6220

Doctor of Nursing Practice (1)

DN7400

Doctor of Medicine (1)

MD9100

Education Specialist (2)

ED4705	Early Education and Intervention
ES4650	Leadership

Master of Arts (7)

MA1105	Biology
MA2710	Communications
MA4400	Counseling
MA1405	English
MA1505	History
MA1705	Linguistics
MA1805	Mathematics

Master of Arts in Liberal Studies (1)

MA1700

Master of Accounting (1)

MA3100

Master of Arts in Teaching (3)

MT4120	Elementary Education
MT4500	Reading and Language Arts
MT4220	Secondary Education

Master of Business Administration (2)

MB3900
MB3901

Master of Education (6)

ME4668	Higher Education Leadership
ME4700	Early Childhood Education
ME4610	Educational Leadership
ME4620	Educational Studies
ME4800	Special Education
ME4615	Teacher Leadership

Master of Music (7)

MM2335	Conducting
MM2345	Instrumental Performance
MM2305	Music Education
MM2320	Piano Pedagogy
MM2325	Piano Performance
MM2310	Vocal Pedagogy
MM2315	Vocal Performance

Master of Public Administration (1)

MP2560

Master of Science (19)

MS1835	Applied Statistics
MS1105	Biology
MS1230	Chemistry
MS5020	Computer Science
MS5540	Electrical and Computer Engineering
MS5620	Embedded Systems
MS5560	Engineering Management
MS6240	Exercise Science
MS5185	Industrial and Systems Engineering
MS1860	Industrial Applied Mathematics
MS3550	Information Technology Management
MS5160	Mechanical Engineering
MS5545	Mechatronics
MS6220	Physical Therapy
MS2405	Physics
MS6045	Safety Management
MS5600	Software Engineering and Information Technology
MS5180	Systems Engineering
MS2605	Psychology

Master of Science in Nursing (5)

MS7270	Adult Gerontological Nurse Practitioner
MS7280	Family Nurse Practitioner
MS7220	Nurse Anesthesia
MS7290	RN to MSN

Master of Training and Development (1)

MD4900

Master of Public Health (1)

MH6300

Graduate Certificate (25)

GC4551	Advanced Microcomputer Applications
GC4820	Autism Spectrum Disorder
GC1107	Biomedical Sciences
GC6245	Clinical Exercise Science
GC7266	Clinical Nurse Leadership
GC6248	Complementary Medicine and Wellness
GC2335	Conducting
GC6246	Corporate and Worksite Wellness
GC6240	Exercise Science
GC2345	Instrumental Performance
GC4625	International Education
GC4550	Microcomputer Applications
GC2305	Music Education
GC6233	Neurological Rehabilitation
GC7285	Nursing Education
GC6230	Orthopedic Manual Physical Therapy
GC6232	Orthopedics
GC6231	Pediatric Rehabilitation
GC2320	Piano Pedagogy
GC2325	Piano Performance
GC1880	Statistical Methods
GC6234	Teaching and Learning for Rehabilitation Professionals
GC1720	Teaching English as Second language
GC2310	Vocal Pedagogy
GC2315	Vocal Performance

Post Masters Graduate Certificate (29)

PM3100	Accounting
PM7271	Adult Gerontological Nurse Practitioner
PM4561	Advanced Reading, Language Arts and Literature
PM3706	Business Economics
PM4661	Central Office Administration
PM2335	Conducting
PM2564	Court Administration
PM2569	Criminal Justice Leadership
PM3851	Entrepreneurship
PM7281	Family Nurse Practitioner

PM3201	Finance
PM3301	General Management
PM2566	Health Care Administration
PM4670	Higher Education
PM3401	Human Resources Management
PM2346	Instrumental Performance
PM3306	International Business
PM2568	Local Government Management
PM3501	Management Information Systems
PM3601	Marketing
PM2305	Music Education
PM2567	Nonprofit Organization & Management
PM7221	Nurse Anesthesia
PM2320	Piano Pedagogy
PM2326	Piano Performance
PM3807	Production/Operations Management
PM4560	Reading, Language Arts and Literature
PM2311	Vocal Pedagogy
PM2315	Vocal Performance

III. Staffing and Enrollment

The following tables and graphs are provided:

Figure 1 - Faculty and Staff Full Time Equivalent (FTE) by Program, FY 2011-12

This chart shows the FTE for faculty, administration and clerical/service for both instructional disciplines and non-instructional program classes.

		FACULTY	ADMINISTRATION	CLERICAL AND SERVICE
5	AREA STUDIES	13.51	0.23	0.66
9	COMMUNICATION	39.82	0.09	1.06
11	COMPUTERS	18.41	4.97	3.02
13	EDUCATION	105.30	8.97	11.87
14	ENGINEERING	41.67	10.33	5.22
16	FOREIGN LANGUAGES	48.08	0.51	2.88
23	ENGLISH & LETTERS	82.74	1.85	4.10
24	LIBERAL ARTS	6.72	1.36	2.17
25	LIBRARY	0.50	0.00	0.00
26	BIOLOGY	37.88	7.90	5.22
27	MATH	37.50	5.51	2.84
30	MULTI/INTERDISCIPLINARY	1.09	0.00	0.00
31	PARKS RECREATION & FITNESS	10.61	0.00	0.00
38	PHILOSOPHY	17.77	0.09	0.70
40	PHYSICAL SCIENCES	32.72	7.92	7.53
42	PSYCHOLOGY	25.37	0.16	1.82
44	PUBLIC ADMINISTRATION	9.47	0.00	0.00
45	SOCIAL SCIENCES	48.80	3.73	3.51
50	VISUAL & PERFORMING ARTS	74.48	10.49	12.25
51	HEALTH PROFESSIONS	3.83	0.00	0.00
51.12		16.86	11.45	2.03
51.22	PUBLIC HEALTH	6.48	0.00	0.00
51.22	REG NURSING	41.35	1.48	0.00
51.99	OTHER HEALTH PROFESSIONALS	23.90	4.36	3.67
52	BUSINESS	85.67	2.54	9.30
54	HISTORY	16.96	0.45	1.80
	TOTAL INSTRUCTION	847.49	84.39	81.65
	RESEARCH		10.68	4.12
	PUBLIC SUPPORT		1.68	0.11
	ACADEMIC SUPPORT		190.76	141.45
	STUDENT SERVICES		82.15	95.12
	INSTITUTIONAL SUPPORT		119.58	84.22
	PLANT OPERATION & MAINT		15.51	102.88
	AUXILIARY ENTERPRISES		34.41	2.01
	TOTAL FTEs	800.33	539.16	511.56

Figure 2 - Student Credit Hours by Level and by Program, FY 2012-13
 This chart shows credit hours awarded by instructional discipline.

CIP		Lower	Upper	Masters	Doctoral	Total
05	Area Studies	6192	1186			7378
09	Communication	8124	10945	520		19589
11	Computer Science	5216	2652	965	232	9065
13	Education	1073	15265	19046	3855	39239
14	Engineering	4291	5381	3799	612	14083
16	Modern Languages	18248	3968	520		22736
23	English	31892	11540	355		43787
24	Liberal Arts	2264	100	176		2540
25	Library Science	196				196
26	Biology	21341	12717	881	106	35045
27	Math	24760	1370	1145	39	27314
30	Multi/Interdisciplin. Sciences		1298			1298
31	Parks, Recreation & Fitness	3034	2590	810		6434
38	Philosophy	10140	1824			11964
40	Physical Sciences	30127	1682	426	258	32493
42	Psychology	16372	6344	360		23076
43	Criminal Justice	92	268			360
44	Public Administration	436	3054	1420		4910
45	Social Science	21884	13091	231		35206
50	Fine Arts	21194	7728	346	93	29361
51.10	Med Library Sciences	611	3052			3663
51.22	Public Health	437	1938	90		2465
51.23	Rehab & Therapeutic		334	2909	1499	4742
51.38	Nursing	7245	17170	3536	373	28324
51.99	Other Health Professions	4633	9695	132		14460
52	Business	10238	29158	7425		46821
54	History	7792	3360	130		11282
Total		257,832	167,710	45,222	7,067	477,831

Figure 3 - Degrees Awarded by Program, FY 2011-12
 This chart shows the degrees awarded by program.

CIP		Bachelor's	Post Bachelor's	Master's	Post Master's	Doctoral	Total
03	Environmental Sciences	6	0	0	0	0	6
05	Area Studies	6	0	0	0	0	6
09	Communication	227	0	0	0	0	227
11	Computer Science	45	0	21	0	0	66
13	Education	181	2	369	53	16	621
14	Engineering	79	0	75	0	12	166
15	Engineering Management	0	0	16	0	0	16
16	Modern Languages	50	0	8	0	0	58
23	English	114	0	11	0	0	125
24	Liberal Arts	113	0	1	0	0	114
26	Biology	189	4	10	0	3	206
27	Math	20	0	11	0	2	33
31	Parks, Recreation & Fitness	0	0	24	0	0	24
38	Philosophy	9	0	0	0	0	9
40	Physical Sciences	11	0	13	0	3	27
42	Psychology	180	0	0	0	0	180
44	Public Administration	70	0	27	0	0	97
45	Social Science	177	0	0	0	0	177
50	Fine Arts	105	2	7	0	0	114
51.16	Nursing	364	0	50	3	21	438
51.22	Public Health	23	0	8	0	0	31
51.99	Other Health Professions	204	16	1	0	41	262
52	Business	413	0	204	3	0	620
54	History	54	0	4	0	0	58
Total	Total	2,640	24	860	59	98	3,681

Figure 4 - Enrollment Trends from Fall 1998 to Fall 2013

This graphic shows the growth over the last twelve years in undergraduate and graduate resident students and undergraduate and graduate non-resident students. During this period Oakland University's enrollment increased from 14,289 to 20,169, an increase of over 41%.

Fall Term	Undergraduate			Graduate			Total		
	In-State	Out of State	Total	In-State	Out of State	Total	In-State	Out of State	Total
1998	10,963	148	11,111	3,061	117	3,178	14,024	265	14,289
1999	11,473	181	11,654	2,989	83	3,072	14,462	264	14,726
2000	11,797	205	12,002	3,132	101	3,233	14,929	306	15,235
2001	12,311	218	12,529	3,236	110	3,346	15,547	328	15,875
2002	12,418	216	12,634	3,310	115	3,425	15,728	331	16,059
2003	12,731	228	12,959	3,515	102	3,617	16,246	330	16,576
2004	12,894	221	13,115	3,580	207	3,787	16,474	428	16,902
2005	13,233	215	13,448	3,787	104	3,891	17,020	319	17,339
2006	13,484	217	13,701	3,936	100	4,036	17,420	317	17,737
2007	13,907	183	14,090	3,879	113	3,992	17,786	296	18,082
2008	14,233	164	14,397	3,646	126	3,772	17,879	290	18,169
2009	15,091	184	15,275	3,526	319	3,645	18,617	303	18,920
2010	15,331	199	15,530	3,400	123	3,523	18,731	322	19,053
2011	15,637	201	15,838	3,411	130	3,541	19,048	331	19,379
2012	15,954	236	16,190	3,385	165	3,550	19,339	401	19,740
2013	16,283	311	16,594	3,316	259	3,575	19,599	570	20,169

Figure 5 – Enrollment Projections by School/College and Level, Fall 2012 – Fall 2016
 Oakland University continues to experience increases in enrollments.

Enrollment Projections by School/College and Level							
Fall 2012 - Fall 2016							
Undergraduate	Actual	Projections					% Change 2011 - 2016
	2011	2012	2013	2014	2015	2016	
CAS	6,036	6,105	6,170	6,218	6,282	6,354	5.3%
SBA	2,113	2,146	2,169	2,186	2,208	2,234	5.7%
SEHS	1,317	1,333	1,347	1,358	1,371	1,387	5.3%
SECS	1,030	1,089	1,100	1,109	1,120	1,133	10.0%
SHS	1,846	1,923	1,943	1,959	1,979	2,001	8.4%
SON	1,845	1,870	1,889	1,904	1,924	1,946	5.5%
UP/None	1,651	1,631	1,648	1,661	1,678	1,698	2.8%
Total	15,838	16,098	16,267	16,396	16,563	16,754	5.8%
Graduate							
	2011	2012	2013	2014	2015	2016	
CAS	437	423	424	428	433	459	5.0%
SBA	437	430	431	434	442	465	6.4%
SEHS	1,599	1,581	1,584	1,603	1,637	1,693	5.9%
SECS	431	426	428	441	447	466	8.1%
SHS	258	250	251	254	258	271	5.1%
SON	329	321	322	326	331	346	5.3%
Medical School	50	125	225	349	448	547	994.0%
Total	3,541	3,556	3,664	3,834	3,995	4,433	25.2%
Total							
	2011	2012	2013	2014	2015	2016	
CAS	6,473	6,529	6,594	6,646	6,714	6,813	5%
SBA	2,550	2,576	2,600	2,621	2,650	2,699	6%
SEHS	2,916	2,914	2,931	2,960	3,008	3,081	6%
SECS	1,461	1,515	1,528	1,550	1,567	1,599	9%
SHS	2,104	2,173	2,194	2,212	2,237	2,273	8%
SON	2,174	2,191	2,212	2,231	2,255	2,292	5%
Medical School	50	125	225	349	448	547	994%
University Programs	1,651	1,631	1,648	1,661	1,678	1,698	3%
Total	19,379	19,654	19,931	20,230	20,558	21,002	8%

Figure 6 – General Fund Square Feet per Student in Michigan, FY 2011-2012

This chart shows that Oakland University is last in general fund square footage per student of the 15 Michigan institutions. Source: Heidi Data Base

Rank by SQ FT	
UNIV	SQFT/FYES
UM-AA	343.11
ULSSU	337.72
MTU	325.35
MSU	313.46
WSU	292.46
WMU	263.54
NMU	224.90
UM-D	208.72
UM-F	208.68
EMU	177.40
CMU	164.29
SVSU	163.75
FSU	149.69
GVSU	123.44
OU	99.01

Future Staffing Needs

Oakland University currently employs 3,924 full and part-time faculty and staff and 2,714 student employees. In addition, there are over 100 employees of contract service providers for food service, bookstore, and custodial services. Faculty and staff will grow with increased enrollment.

Average Class Size

Average class size for undergraduate instruction in fall 2012 was 30.6 students. Graduate class size in fall 2012 was 15.5 and PhD classes averaged 17.2 students. It is important to the institutional character that the size of classes remains small. However, larger classes have been a cost-effective way to absorb growth.

IV. Facility Assessment

Utilization Rates

Oakland University has the lowest building square footage per student (figure 6) of any of the 15 public universities. However, a comparison of its programmatic mix with its doctoral programs and the relatively large number of engineering and science programs would lead to the conclusion that it should at least be near the overall average in total space. Program by program comparisons to national norms for disciplines indicates that all programs fall short in space.

Classroom utilization is also very high, especially in the evenings. Oakland's enrollment includes a large number of non-traditional students. Demand for evening classes exceeds available facilities. A large number of evening classes are offered at area high schools.

Mandated Standards

Mandated standards for animal research are met.

Functionality

The limited amount of specialized program space affects overall space functionality. This is particularly evident in the most impacted areas of Nursing, Health Sciences, Engineering and the Performing Arts. Recent facilities additions for the sciences, nursing, business and education provide good space for programmatic needs. Most academic programs on the Oakland University campus are offered in the following buildings:

- North Foundation Hall – Completed in 1959, and is primarily a student services building, but also includes two classrooms. The building is receiving a general facelift and significant improvements to the air distribution system.

- South Foundation Hall - Completed in 1959, this building is primarily a classroom building. The University has been adding technology to the classrooms over the past several years. This building is used by nearly all academic disciplines.
- Hannah Hall of Science - Completed in 1961, houses science, health science, and engineering laboratories as well as classrooms and offices. Air conditioning was added as part of a major energy project undertaken several years ago. Portions of the building were renovated to accommodate health sciences as part of the State funded Science and Engineering Building.
- Kresge Library – Completed in 1961 with additions in 1989. This is the central library for the institution.
- Wilson Hall - Completed in 1967, houses the departments of Art and Art History, and Communications and Journalism. It also houses Meadow Brook Theatre and administrative offices.
- Dodge Hall of Engineering - Completed in 1969, houses engineering and biology laboratories, offices, and classrooms. It also provides space for the Eye Research Institute and the administrative/academic computing center. The School of Engineering and Computer Science has a significant space deficit compared to national standards. This deficit will be significantly reduced by the construction of the new Engineering Center.
- Varner Hall - Completed in 1970, houses the departments of Music, Theatre and Dance (MTD), History, Political Science, and Sociology/Anthropology. The facilities for MTD are inadequate to meet the needs of their growing programs.
- O'Dowd Hall - Completed in 1982, this building houses the School of Nursing, the Graduate Office, the Registrar, the Departments of English, Writing and Rhetoric, Modern Languages and Literatures, Linguistics, Philosophy, and a number of general purpose classrooms. O'Dowd Hall is the home of the School of Medicine. The building continues to suffer from leaks along the curtain wall that have been a problem for a number of years. The curtain wall is being replaced in 2012-13.
- Elliott Hall - Completed in 2000, houses the School of Business Administration and Information Technology.
- Pawley Hall - Completed in 2002, houses the School of Education and Human Services, as well as the Lowry Child Development Center.
- Human Health Building – Completed in Fall, 2012, this 172,825 square foot building houses the School of Health Sciences and the School of Nursing. Collectively, this new enterprise is part of Oakland University's vision of better preparing today's health care students by creating an innovative partnership in one structure. With this new building, growth in undergraduate and graduate enrollment can be significantly increased in response to vital shortages in nursing and heavy demand for health science professionals.

- Oakland University Engineering Center (OUEC) - Construction started in Fall, 2012, it is designed to provide high quality twenty first century instructional and research facilities for all engineering and computer science programs that are vital to the revival of the economy of Southeast Michigan as well as the State of Michigan in general. This includes supporting the global competitiveness of the US alternative energy, health care and bio-medical, automotive, defense, and other high-tech industries. The OUEC will add approximately 86,884 square feet of net assignable space to the School of Engineering and Computer Science (SECS), as well as 13,500 square feet of assignable general purpose classroom space to support the growth of the overall student population.

Although academic programs are offered in other facilities and there are a number of other service buildings and auxiliary buildings, the above are the major academic facilities. The average age of buildings on the main campus is 30 years old. In general, buildings are in fair condition. Oakland University maintains a comprehensive list of plant renewal and deferred plant renewal projects, which is updated annually.

Replacement Value of Facilities

The replacement value of Oakland University's 3.1 million square feet, including Meadow Brook Hall is estimated at \$922 million.

Utility Systems Condition

The utility systems in facilities (i.e., heating, ventilation, air conditioning (HVAC), water, sewage, gas and electrical) are in varying degrees of condition, depending on facility age. All are fully functional, with those in the 30 to 40 year age and beyond group needing upgrades to increase efficiency and effectiveness of operation. The storm water system for some of the facilities flooded due to unusual 100-year storms and need attention in coming years. The existing water/sewage infrastructure is adequate to serve the projected programming needs for the next 10 years. An upgrade to the electrical substation was completed in 2003, which included cabling, switchgear, and a new substation. This upgrade will meet projected electrical needs for at least 15 years however capacity of the cabling needs to be evaluated as the campus grows in the future. Additional upgrades to infrastructure throughout campus will be required as campus facilities age and enrollment grows.

Many of the older facilities lack fire suppression systems and would be in consideration to update the facilities per current Codes during major renovation projects.

Due to the age of OU's infrastructure replacement/upgrade is needed for the underground HTHW lines. A new HTHW line needs to be installed to complete the south loop from the new Engineering Center (under construction) to Varner Hall, IT closets, IT cabling with Voice over IP capabilities, Boiler #4 in the Central Heat Plant, and the infrastructure (HVAC, plumbing and electrical) in the academic buildings (Dodge Hall of Engineering, South Foundation Hall, Hannah Hall of Science, Varner Hall) as well as residence halls (Hamlin Hall and Vandenberg Hall).

Facility Infrastructure Condition

The pavement/sidewalks/structural infrastructure is generally in fair condition. Funds are allocated annually to pavement/sidewalk repair to restore the most deteriorated portions.

Campus major projects included in the next 5-year plan are installation of a Co-generation system, replacement of old air-handling units, HTHW system upgrade, storm water management, and upgrade VOIP communication network. A service contract will be in place to maintain new micro-turbines (2) in the new Engineering Center, which will open in fall 2014. Oakland budgets \$3.8 million for non-routine maintenance in its current fiscal year from Endowment Distribution, Recreation Reserves and Housing Reserves.

Land

Oakland University's campus includes 1,443 acres. The main campus is approximately 350 acres. The remaining campus includes several major developments (a faculty/staff subdivision, the National Register Meadow Brook Estate, two golf courses), a large amount of wetland, and significant undeveloped acreage. The Campus Master Plan, approved by the Board of Trustees in April 2001, has identified future uses for all of the undeveloped property.

Buildings Obligated to the State Building Authority

The following buildings/portions of buildings are bonded through State bonds:

- Science and Engineering Building – lease expiration in 2034
- Elliott Hall – lease expiration in 2040
- Pawley Hall – lease expiration in 2042
- Human Health Building – lease expiration in 2047

The following facilities are bonded through the University:

- Golf course - final payment in 2026
- Recreation and Athletic Center - final payment in 2026
- Student Apartments – final payment in 2031
- Electrical Power Upgrade – final payment in 2031
- Parking Structure – final payment in 2031
- Oakland Center Expansion – final payment in 2031

Oakland University Classroom Utilization Reports

Peak - 10 AM to 3 PM

Fall 2009 Data

25 Available Weekly Room Hours - WRH

Room Type 110 - Classrooms

Bldg Num	Room Num	ASF	Capacity	WRH	WRH%	Station Occupancy
DHE	200	1,126	108	22.00	88.0%	56.1%
DHE	201	3,004	314	23.01	92.0%	22.4%
DHE	202	702	52	21.10	84.4%	72.1%
DHE	203	990	77	22.00	88.0%	54.4%
DHE	204	374	25	14.00	56.0%	58.3%
DHE	236	394	25	22.00	88.0%	63.3%
DHE	237	389	25	18.43	73.7%	56.6%
EH	204	541	35	17.33	69.3%	48.9%
EH	206	523	35	19.00	76.0%	74.9%
EH	208	686	45	22.67	90.7%	62.5%
EH	210	683	45	21.00	84.0%	60.7%
EH	212	696	45	19.60	78.4%	60.4%
EH	214	902	44	16.26	65.0%	56.4%
EH	235	1,021	40	16.36	65.4%	84.6%
EH	237	1,026	40	21.17	84.7%	77.1%
EH	239	1,018	40	17.00	68.0%	68.4%
HHS	190	2,131	187	25.27	101.1%	55.0%
HHS	195	2,068	187	23.13	92.5%	74.6%
HHS	220	548	40	20.06	80.2%	80.8%
HHS	225	422	30	12.93	51.7%	74.7%
HHS	350	498	40	14.82	59.3%	49.1%
NFH	156	1,757	157	21.23	84.9%	74.6%
NFH	159	1,757	90	14.00	56.0%	72.2%
ODH	108	424	60	22.00	88.0%	82.9%
ODH	110	1,548	60	22.00	88.0%	88.5%
ODH	202A	1,591	0	18.00	72.0%	49.4%
ODH	202B	2,391	0	17.67	70.7%	57.6%
ODH	202C	1,561	0	16.10	64.4%	93.3%
ODH	203	2,460	229	23.92	95.7%	60.8%
ODH	204	2,426	178	19.13	76.5%	73.3%
PH	302	1,660	72	16.93	67.7%	57.1%
PH	306	910	48	19.01	76.0%	72.3%
PH	307	938	48	16.00	64.0%	74.7%
PH	308	910	48	15.60	62.4%	62.8%
PH	309	930	48	18.00	72.0%	65.3%
PH	310	732	36	15.67	62.7%	71.6%
PH	312	738	36	23.00	92.0%	72.3%
PH	314	916	48	23.00	92.0%	46.6%

PH	316	918	48	9.55	38.2%	47.2%
PH	318	910	48	20.22	80.9%	70.5%
PH	320	735	36	18.22	72.9%	58.5%
SEB	093	574	0	16.93	67.7%	50.7%
SEB	130	673	42	18.00	72.0%	72.5%
SEB	164	1,131	64	18.00	72.0%	73.4%
SEB	168	1,112	64	18.00	72.0%	66.7%
SEB	172	1,130	64	22.46	89.8%	61.2%
SEB	185	883	50	19.00	76.0%	56.7%
SEB	187	543	36	23.00	92.0%	72.8%
SEB	364	428	30	15.62	62.5%	82.3%
SEB	372	1,043	50	2.35	9.4%	11.1%
SEB	376	669	30	15.07	60.3%	84.7%
SEB	378	618	30	16.00	64.0%	78.3%
SEB	384	654	44	18.00	72.0%	65.4%
SEB	386	607	40	18.00	72.0%	60.0%
SEB	388	607	30	23.00	92.0%	69.0%
SFH	163	985	70	22.00	88.0%	71.0%
SFH	164	667	48	23.00	92.0%	70.7%
SFH	165	992	75	19.65	78.6%	70.8%
SFH	166	667	48	22.00	88.0%	42.5%
SFH	167	667	30	23.00	92.0%	81.6%
SFH	168	667	48	23.00	92.0%	48.6%
SFH	169	667	40	23.00	92.0%	53.7%
SFH	170	667	48	22.00	88.0%	53.6%
SFH	171	667	40	23.00	92.0%	44.2%
SFH	172	667	48	22.00	88.0%	39.4%
SFH	173	667	48	23.00	92.0%	52.7%
SFH	174	667	48	22.22	88.9%	70.8%
SFH	176	732	48	20.67	82.7%	49.3%
SFH	263	991	75	23.00	92.0%	70.0%
SFH	265	446	25	19.00	76.0%	68.8%
SFH	266	688	48	23.00	92.0%	64.0%
SFH	268	668	48	22.00	88.0%	52.5%
SFH	269	688	48	20.00	80.0%	54.2%
SFH	270	688	48	18.00	72.0%	44.9%
SFH	271	668	48	19.00	76.0%	38.6%
SFH	272	668	48	23.00	92.0%	55.0%
SFH	273	668	48	21.93	87.7%	48.0%
SFH	274	668	48	22.00	88.0%	45.3%
SFH	276	733	48	23.00	92.0%	39.9%
SFH	363	896	70	18.00	72.0%	61.9%
SFH	364	668	48	23.00	92.0%	43.9%
SFH	365	992	75	18.00	72.0%	52.9%
SFH	366	668	48	22.00	88.0%	51.3%
SFH	367	668	48	21.67	86.7%	56.9%
SFH	368	668	48	22.00	88.0%	44.1%
SFH	369	668	48	21.67	86.7%	50.0%
SFH	370	688	48	22.00	88.0%	53.2%
SFH	371	668	48	23.00	92.0%	57.8%
SFH	372	668	48	22.00	88.0%	43.8%
SFH	373	668	48	23.00	92.0%	32.2%

SFH	374	668	48	22.33	89.3%	46.5%
SFH	376	732	48	20.00	80.0%	47.1%
VAR	205	1,151	90	22.00	88.0%	79.2%
VAR	206	1,184	90	14.00	56.0%	87.1%
VAR	229	371	25	0.00	0.0%	n/a
VAR	479	998	60	23.00	92.0%	60.0%
WH	102	870	60	22.00	88.0%	83.9%
WH	105	856	60	18.00	72.0%	78.3%
WH	124	1,062	90	19.00	76.0%	83.9%
WH	301	306	20	22.00	88.0%	69.1%
WH	313	500	25	15.00	60.0%	85.3%
WH	416	372	15	8.00	32.0%	60.0%
Averages		888	56	19.47	77.9%	65.9%

Classroom Utilization Report

Off Peak - 8 AM to 10 am and 3pm to 5 pm
Fall 2009 Data

20 Available Weekly
Room Hours - WRH
Room Type 110 - Classrooms

Bldg Num	Room Num	ASF	Capacity	WRH	WRH%	Station Occupancy
DHE	200	1,126	108	8.00	40.0%	30.8%
DHE	201	3,004	314	16.91	84.5%	22.0%
DHE	202	702	52	16.00	80.0%	74.9%
DHE	203	990	77	17.00	85.0%	56.3%
DHE	204	374	25	9.00	45.0%	72.9%
DHE	236	394	25	11.00	55.0%	73.1%
DHE	237	389	25	5.00	25.0%	21.6%
EH	204	541	35	16.33	81.6%	53.8%
EH	206	523	35	17.00	85.0%	63.5%
EH	208	686	45	14.38	71.9%	61.7%
EH	210	683	45	9.93	49.7%	80.8%
EH	212	696	45	12.00	60.0%	60.7%
EH	214	902	44	5.33	26.7%	79.6%
EH	235	1,021	40	9.67	48.4%	50.9%
EH	237	1,026	40	17.67	88.4%	60.0%
EH	239	1,018	40	6.93	34.7%	62.8%
HHS	190	2,131	187	17.00	85.0%	59.4%
HHS	195	2,068	187	17.00	85.0%	73.7%
HHS	220	548	40	18.44	92.2%	81.7%
HHS	225	422	30	5.60	28.0%	61.3%
HHS	350	498	40	8.93	44.7%	77.9%
NFH	156	1,757	157	5.00	25.0%	68.3%
NFH	159	1,757	90	12.00	60.0%	69.2%
ODH	108	424	60	15.93	79.7%	73.0%
ODH	110	1,548	60	16.00	80.0%	74.2%
ODH	202A	1,591	0	8.00	40.0%	63.3%
ODH	202B	2,391	0	7.01	35.0%	60.1%

ODH	202C	1,561	0	9.00	45.0%	60.8%
ODH	203	2,460	229	18.15	90.8%	57.9%
ODH	204	2,426	178	17.00	85.0%	55.0%
PH	302	1,660	72	9.00	45.0%	74.7%
PH	306	910	48	14.57	72.8%	76.1%
PH	307	938	48	6.55	32.8%	52.9%
PH	308	910	48	15.76	78.8%	62.0%
PH	309	930	48	14.00	70.0%	55.4%
PH	310	732	36	10.88	54.4%	63.0%
PH	312	738	36	9.00	45.0%	52.2%
PH	314	916	48	9.00	45.0%	67.8%
PH	316	918	48	9.00	45.0%	31.7%
PH	318	910	48	14.00	70.0%	63.4%
PH	320	735	36	7.98	39.9%	62.2%
SEB	093	574	0	12.44	62.2%	35.8%
SEB	130	673	42	10.00	50.0%	56.2%
SEB	164	1,131	64	16.00	80.0%	65.6%
SEB	168	1,112	64	13.00	65.0%	36.2%
SEB	172	1,130	64	13.67	68.4%	66.3%
SEB	185	883	50	10.50	52.5%	29.1%
SEB	187	543	36	13.00	65.0%	54.1%
SEB	364	428	30	5.00	25.0%	26.0%
SEB	372	1,043	50	0.00	0.0%	n/a
SEB	376	669	30	9.13	45.7%	130.7%
SEB	378	618	30	7.00	35.0%	26.7%
SEB	384	654	44	9.00	45.0%	33.3%
SEB	386	607	40	16.00	80.0%	58.6%
SEB	388	607	30	14.00	70.0%	47.6%
SFH	163	985	70	12.93	64.7%	52.9%
SFH	164	667	48	19.00	95.0%	49.9%
SFH	165	992	75	13.00	65.0%	46.9%
SFH	166	667	48	11.33	56.6%	57.7%
SFH	167	667	30	15.93	79.7%	54.4%
SFH	168	667	48	17.00	85.0%	46.0%
SFH	169	667	40	14.67	73.4%	46.5%
SFH	170	667	48	12.00	60.0%	45.5%
SFH	171	667	40	17.00	85.0%	33.7%
SFH	172	667	48	17.00	85.0%	44.2%
SFH	173	667	48	13.00	65.0%	56.1%
SFH	174	667	48	14.55	72.8%	42.6%
SFH	176	732	48	15.67	78.4%	43.4%
SFH	263	991	75	7.10	35.5%	87.4%
SFH	265	446	25	17.00	85.0%	45.4%
SFH	266	688	48	12.00	60.0%	45.1%
SFH	268	668	48	13.10	65.5%	51.3%
SFH	269	688	48	11.00	55.0%	76.3%
SFH	270	688	48	13.00	65.0%	53.0%
SFH	271	668	48	13.00	65.0%	46.2%
SFH	272	668	48	12.00	60.0%	40.5%
SFH	273	668	48	13.00	65.0%	66.0%
SFH	274	668	48	13.00	65.0%	58.8%
SFH	276	733	48	9.00	45.0%	35.2%

SFH	363	896	70	16.00	80.0%	72.9%
SFH	364	668	48	13.00	65.0%	37.0%
SFH	365	992	75	6.00	30.0%	29.8%
SFH	366	668	48	13.00	65.0%	53.2%
SFH	367	668	48	13.00	65.0%	50.6%
SFH	368	668	48	12.00	60.0%	39.8%
SFH	369	668	48	12.00	60.0%	53.0%
SFH	370	688	48	6.00	30.0%	22.9%
SFH	371	668	48	13.00	65.0%	53.5%
SFH	372	668	48	10.00	50.0%	45.4%
SFH	373	668	48	12.00	60.0%	45.5%
SFH	374	668	48	11.26	56.3%	55.3%
SFH	376	732	48	11.00	55.0%	55.7%
VAR	205	1,151	90	16.00	80.0%	73.9%
VAR	206	1,184	90	12.00	60.0%	65.6%
VAR	229	371	25	0.00	0.0%	n/a
VAR	479	998	60	13.00	65.0%	24.1%
WH	102	870	60	10.00	50.0%	62.7%
WH	105	856	60	9.00	45.0%	58.1%
WH	124	1,062	90	13.00	65.0%	69.6%
WH	301	306	20	6.00	30.0%	43.3%
WH	313	500	25	17.00	85.0%	74.4%
WH	416	372	15	4.00	20.0%	33.3%
Averages		888	56	11.87	59.3%	61.5%

Classroom Utilization Report

Evening 5 PM - 10 PM

Fall 2009 Data

25 Available Weekly
Room Hours - WRH

Room Type 110 - Classrooms

Bldg Num	Room Num	ASF	Capacity	WRH	WRH%	Station Occupancy
DHE	200	1,126	108	16.43	65.7%	56.3%
DHE	201	3,004	314	12.00	48.0%	27.8%
DHE	202	702	52	17.00	68.0%	13.8%
DHE	203	990	77	13.00	52.0%	25.7%
DHE	204	374	25	9.00	36.0%	56.9%
DHE	236	394	25	9.00	36.0%	74.2%
DHE	237	389	25	13.00	52.0%	62.5%
EH	204	541	35	13.70	54.8%	40.8%
EH	206	523	35	8.60	34.4%	74.8%
EH	208	686	45	14.20	56.8%	58.2%
EH	210	683	45	13.20	52.8%	43.6%
EH	212	696	45	16.20	64.8%	65.5%
EH	214	902	44	12.70	50.8%	68.8%
EH	235	1,021	40	13.42	53.7%	68.9%
EH	237	1,026	40	14.92	59.7%	59.5%
EH	239	1,018	40	13.70	54.8%	52.4%
HHS	190	2,131	187	8.00	32.0%	44.4%
HHS	195	2,068	187	14.13	56.5%	43.2%

HHS	220	548	40	24.11	96.4%	66.3%
HHS	225	422	30	12.10	48.4%	58.6%
HHS	350	498	40	15.52	62.1%	74.6%
NFH	156	1,757	157	12.70	50.8%	37.2%
NFH	159	1,757	90	8.27	33.1%	56.6%
ODH	108	424	60	11.15	44.6%	36.2%
ODH	110	1,548	60	15.75	63.0%	41.9%
ODH	202A	1,591	0	8.60	34.4%	46.4%
ODH	202B	2,391	0	3.55	14.2%	43.1%
ODH	202C	1,561	0	13.00	52.0%	40.2%
ODH	203	2,460	229	4.55	18.2%	60.9%
ODH	204	2,426	178	5.00	20.0%	34.4%
PH	302	1,660	72	14.70	58.8%	55.8%
PH	306	910	48	13.70	54.8%	55.6%
PH	307	938	48	14.20	56.8%	71.5%
PH	308	910	48	10.65	42.6%	57.8%
PH	309	930	48	13.70	54.8%	50.5%
PH	310	732	36	15.20	60.8%	50.7%
PH	312	738	36	13.70	54.8%	51.8%
PH	314	916	48	10.65	42.6%	81.4%
PH	316	918	48	10.65	42.6%	57.5%
PH	318	910	48	13.20	52.8%	44.0%
PH	320	735	36	14.20	56.8%	59.8%
SEB	093	574	0	8.55	34.2%	37.8%
SEB	130	673	42	14.43	57.7%	48.8%
SEB	164	1,131	64	16.00	64.0%	30.1%
SEB	168	1,112	64	17.00	68.0%	60.9%
SEB	172	1,130	64	17.00	68.0%	68.4%
SEB	185	883	50	16.50	66.0%	31.8%
SEB	187	543	36	14.60	58.4%	33.7%
SEB	364	428	30	11.21	44.8%	37.4%
SEB	372	1,043	50	12.00	48.0%	30.0%
SEB	376	669	30	10.78	43.1%	18.6%
SEB	378	618	30	17.00	68.0%	47.8%
SEB	384	654	44	9.00	36.0%	39.9%
SEB	386	607	40	13.05	52.2%	47.3%
SEB	388	607	30	16.22	64.9%	56.1%
SFH	163	985	70	14.75	59.0%	52.4%
SFH	164	667	48	16.30	65.2%	43.5%
SFH	165	992	75	12.10	48.4%	41.6%
SFH	166	667	48	10.15	40.6%	42.2%
SFH	167	667	30	11.87	47.5%	124.0%
SFH	168	667	48	14.20	56.8%	43.8%
SFH	169	667	40	10.65	42.6%	71.1%
SFH	170	667	48	16.20	64.8%	39.0%
SFH	171	667	40	11.55	46.2%	39.8%
SFH	172	667	48	13.70	54.8%	36.4%
SFH	173	667	48	12.00	48.0%	40.3%
SFH	174	667	48	13.20	52.8%	77.1%
SFH	176	732	48	14.70	58.8%	53.7%
SFH	263	991	75	11.10	44.4%	59.1%
SFH	265	446	25	11.10	44.4%	51.8%

SFH	266	688	48	15.20	60.8%	72.0%
SFH	268	668	48	12.65	50.6%	45.9%
SFH	269	688	48	14.70	58.8%	63.2%
SFH	270	688	48	15.20	60.8%	47.4%
SFH	271	668	48	12.65	50.6%	50.3%
SFH	272	668	48	16.10	64.4%	42.9%
SFH	273	668	48	14.20	56.8%	38.1%
SFH	274	668	48	12.10	48.4%	40.9%
SFH	276	733	48	13.37	53.5%	54.0%
SFH	363	896	70	16.20	64.8%	53.9%
SFH	364	668	48	9.55	38.2%	49.8%
SFH	365	992	75	8.00	32.0%	36.0%
SFH	366	668	48	11.60	46.4%	30.4%
SFH	367	668	48	13.70	54.8%	42.4%
SFH	368	668	48	9.10	36.4%	40.8%
SFH	369	668	48	11.15	44.6%	45.1%
SFH	370	688	48	11.20	44.8%	38.2%
SFH	371	668	48	13.70	54.8%	53.4%
SFH	372	668	48	14.20	56.8%	52.8%
SFH	373	668	48	6.55	26.2%	25.2%
SFH	374	668	48	11.10	44.4%	27.1%
SFH	376	732	48	13.00	52.0%	40.1%
VAR	205	1,151	90	9.10	36.4%	82.1%
VAR	206	1,184	90	11.65	46.6%	40.9%
VAR	229	371	25	0.00	0.0%	n/a
VAR	479	998	60	14.20	56.8%	48.0%
WH	102	870	60	14.20	56.8%	60.1%
WH	105	856	60	15.20	60.8%	64.6%
WH	124	1,062	90	6.60	26.4%	37.0%
WH	301	306	20	14.20	56.8%	65.1%
WH	313	500	25	12.32	49.3%	76.1%
WH	416	372	15	7.10	28.4%	69.8%
Averages		888	56	12.53	50.1%	48.9%

FACILITY CONDITION ASSESSMENT

PLANT RENEWAL, DEFERRED PLANT RENEWAL & PLANT ADAPTATION BACKLOG

The Facilities management computerized Capital Asset Management (CAM) program is a relational database management system, containing approximately 1,500 projects; totaling over \$201 million. In addition to this summary report, the database is capable of producing ad-hoc reports by priority rank, building system, completed and In-process projects in the current fiscal year, and backlog category.

The objective with this document, in addition to identifying our needs, is to raise awareness of the deferred plant renewal liability, and to serve as a point of departure for broader facilities planning as well as to set priorities. These assessments identified needs, established scope, determined preliminary costs, and prioritized facility projects for the University.

Oakland University completed facility condition assessments in 2006 for 34 campus buildings and updates the assessments of four buildings each year.

		Million Dollar					
System Code	Projects Category	2012 Projects Total	Closed Projects	In- Process Projects	New Projects added	2013 Projects Total	
AC	Accessibility	\$ 4.42	\$ -	\$ 0.01	\$ (1.38)	\$ 3.03	See Note 1
EL	Electrical	\$ 11.40	\$ 0.26	\$ 0.30	\$ 3.61	\$ 14.45	
EN	Energy	\$ 1.67	\$ 0.97	\$ 0.35	\$ 3.58	\$ 3.93	
ES	Exterior System	\$ 15.32	\$ 0.75	\$ 0.27	\$ 3.29	\$ 17.59	
FS	Fire/Life Safety	\$ 13.09	\$ -	\$ 0.07	\$ 5.44	\$ 18.46	
HE	Health	\$ 0.85	\$ 0.20	\$ 0.15	\$ 0.64	\$ 1.14	
HT	High Temp / Hot Water	\$ 13.81	\$ 1.07	\$ 0.37	\$ (0.20)	\$ 12.17	See Note 1
HV	HVAC	\$ 33.65	\$ 0.49	\$ 1.34	\$ 6.44	\$ 38.26	
IS	Interior System	\$ 26.89	\$ 11.36	\$ 4.42	\$ 16.40	\$ 27.51	
IT	Information Technology	\$ 25.35	\$ -	\$ 3.77	\$ 0.50	\$ 22.08	
PL	Plumbing	\$ 23.41	\$ 4.26	\$ 0.30	\$ 0.27	\$ 19.11	
RW	Roads / Walks / Parking Lots	\$ 3.82	\$ 1.20	\$ 2.05	\$ 2.49	\$ 3.06	
SI	Site	\$ 17.27	\$ 1.44	\$ 1.09	\$ 2.69	\$ 17.43	
SS	Security Systems	\$ 0.04	\$ -	\$ 0.44	\$ 0.44	\$ 0.04	
VT	Elevator	\$ 3.74	\$ 0.42	\$ 0.05	\$ 0.36	\$ 3.64	
		\$ 194.73	\$ 22.42	\$ 14.98	\$ 42.23	\$ 201.90	
NET CHANGE FROM PREVIOUS YEAR						\$7.17	

Note 1: Projects were eliminated as a result of non-validity and/or duplication.

Remarks Facility Management continually checks the validity of projects in the database and eliminates projects that are not viable. The total net change for the project backlog (\$7.17) is mainly due to inflation.

DEFINITIONS

Capital Asset Management is a systematic approach to renewing the University's capital assets through planned:

Plant Renewal

Deferred Plant Renewal

Plant Adaptation

These terms have been formally defined by the National Association of College and University Business Officers (NACUBO) as follows:

Plant Renewal

"...a systematic approach to planning and budgeting for known future cyclical renewal and replacement requirements that extend the (present) life and retain the usable condition of campus facilities and (building) systems ... not normally contained in the annual operating budget. ..." (NACUBO) Cyclical renewals typically exceed five year cycles and include such items as roof replacement, electrical switchgear, and HVAC system replacement. These expenditures keep the physical plant and related infrastructure in reliable operating condition for its present use.

Deferred Plant Renewal

"... encompasses measures that are not carried out because of underfunding in the budgeting process or perceived low priority..." (NACUBO) This includes actual projects, from the prior or current years, not included in the routine maintenance work. These projects represent "Postponed Work" that was deferred because total costs exceed current budget, or projects that are of a "low priority" that present a minimal return on investment. Also included in the Deferred Plant Renewal project list are those projects that were shifted because funds were re-allocated to address emergencies that have no other funding source.

Plant Adaptation

"...improvements are driven by institutional program changes ..." (NACUBO) This involves a programmatic process to plan and fund for projects that will be required due to an evolving use of the institution (e.g., changes in academic disciplines, shifting expectations, supporting institutional mission, etc.), or changing standards (e.g., campus master plans, architectural standards, etc.). These expenditures are over and above normal maintenance, and are not typically contained in the annual operating budget.

FACILITY CONDITION ASSESMENT RANKING

PRIORITY 1

Current Critical (immediate or current year)

Projects in this category require immediate action to:

- Return a facility to normal operation
- Stop accelerated deterioration
- Correct a cited safety hazard

PRIORITY 2

Potentially Critical (within one year)

Projects in this category, if not corrected expeditiously, will become critical within a year. Situations in this category include:

- Intermittent interruptions
- Rapid deterioration
- Potential safety hazard

PRIORITY 3

Necessary – Not Yet Critical (within years two – five)

Projects in this category include conditions requiring prompt attention to preclude predictable deterioration or potential down time and associated higher costs if deferred further.

PRIORITY 4

Recommended (within years six – ten)

Projects in this category include items that represent a sensible improvement to existing conditions. These are not required for the most basic function of a facility; however, Priority 4 projects will either improve overall usability and/or reduce long-term maintenance.

PRIORITY 5

Recommended (beyond year ten)

Projects in this category may not improve overall usability and/or reduce long-term maintenance; however, they provide an economic payback that would not otherwise be present. Projects in this category may represent to upgrade buildings with current codes during major renovation projects. Projects in this category may also represent non-time based improvement, upgrade, or recommendation.

SOURCE: Association of Higher Education Facilities Officers (APPA)

ABBREVIATIONS

CAMPUS SYSTEM - Accessibility (AC)
 Electrical (EL)
 Energy Management (EN)
 Exterior Structure (ES)
 Fire/Life Safety (FS)
 Health (HE)
 High Temperature / Heat Water (HT)
 HVAC (HV)
 Information Technology (IT)
 Interior / Finish System (IS)
 Plumbing (PL)
 Roads, Walks, Parking Lots (RW)
 Site (SI)
 Vertical Transportation (VT)
 Security Systems (SS)

CATEGORY - Plant Renewal (PR)
 Deferred Plant Renewal (DPR)
 Plant Adaptation (PA)

FACILITIES CONDITION NEEDS INDEX (FCNI) Facility Condition Needs Index provides a relative measure for comparing one building (or group of buildings) to another. The index is a simple calculation, derived by dividing the total project costs (for the ten-year window) by the total facility replacement cost (FRC). When applying the index as an evaluation tool, the lower the number, the better the facility condition. It should also be noted that this is an index, not a percentage. It can (and often does in the case of historic facilities) exceed 1.00.

Facility Condition Needs Index

Individual Building FCNI Range	Condition Description
0.01 – 0.05	Excellent condition, typically new construction
0.06 – 0.15	Good condition, renovations occur on schedule
0.16 – 0.30	Fair condition, in need of normal renovation
0.31 – 0.40	Below average condition, major renovation required
0.41 – 0.59	Poor condition, gut / renovation indicated
0.60 and above	Complete facility replacement indicated

FACILITIES REPLACEMENT COST FRC is reported as the total replacement cost for the building or structure and its contents or fixed assets. As an example, the FRC for student housing includes the replacement cost for the building and all the fixtures within each room. Likewise, the FRC for a central heating plant would include the cost of the structure and the boilers, generators and other equipment contained within.

Executive Summary
All Campus Buildings - Facility Condition Assessment

Building Code	Building Name	Use	Square Feet	FRC	Project Costs	FCNI Total	Year Built	Benchmark Per APPA
ANI	Anibal House	HS	20,487	\$3,884,810	\$1,194,404	0.31	1962	Below Average
ASD	Athletic Sports Dome	UNIV	30,557	\$5,371,152	\$2,485,661	0.46	1996	Poor Condition
AVN	Ann V. Nicholson Apartments	HS	181,291	\$21,755,146	\$1,071,253	0.05	1998	Excellent Condition
BB	Belgian Barn	AUX	9,324	\$705,830	\$223,286	0.32	1935	Below Average
BGM	Building Grounds Maintenance Bldg	UNIV	14,400	\$1,359,755	\$534,661	0.39	1994	Below Average
BRS	Biomedical Research Support Facility	UNIV	14,300	\$5,027,160	\$624,558	0.12	1999	Good Condition
CCC	Chicken Coop Center	AUX	8,404	\$717,140	\$169,209	0.24	1930	Fair Condition
CHP	Central Heating Plant	UNIV	16,833	\$23,670,542	\$4,762,154	0.20	1974	Fair Condition
DHE	Dodge Hall of Engineering	AD	151,204	\$43,931,711	\$15,318,531	0.35	1968	Below Average
ECMB	East Campus & Misc. Buildings	AUX	89,294	\$20,927,517	\$1,415,010	0.07	N/A	Excellent Condition
EH	Elliott Hall	AD	74,582	\$15,619,678	\$1,503,001	0.10	2000	Good Condition
FM	Facilities Management Building	AD	4,084	\$289,768	\$563,277	1.94	1987	Full Replacement
FTZ	Fitzgerald House	HS	20,610	\$3,908,133	\$1,701,746	0.44	1961	Poor Condition
GAT	Gatehouse at MBH	UNIV	2,032	\$913,198	\$724,145	0.79	1929	Historical
GHC	Graham Health Center	UNIV	13,161	\$2,150,930	\$871,179	0.41	1970	Poor Condition
GLC	Golf & Learning Center	AUX	6,038	\$1,061,328	\$236,764	0.22	1914	Fair Condition
GLF	Golf Courses	AUX		\$23,436,645	\$8,137,682	0.35	N/A	Below Average
GRN	Greenhouse	UNIV	3,630	\$638,063	\$788,655	1.24	1917	Historical
GTM	George T. Matthews Apartments	HS	47,464	\$7,412,380	\$1,722,774	0.23	1982	Fair Condition
HAM	Hamlin Hall	HS	143,872	\$34,027,808	\$9,629,224	0.28	1968	Fair Condition
HHB	Human Health Building	UNIV	172,825	\$66,703,000	\$20,524	0.00	2012	Excellent Condition
HHS	Hannah Hall of Science	AD	89,418	\$39,904,442	\$15,008,170	0.38	1961	Below Average
HIL	Hill House	HS	42,522	\$10,057,068	\$3,167,887	0.31	1964	Below Average
JDH	John Dodge House	AD	10,696	\$1,890,505	\$745,143	0.39	1880	Below Average
KL	Kresge Library	AD	164,522	\$28,481,550	\$2,508,329	0.09	1961	Good Condition
MBH	Meadow Brook Hall	AUX	78,002	\$46,873,289	\$9,511,214	0.20	1929	Fair Condition
MC	Main Campus	UNIV		\$117,183,223	\$24,890,620	0.21	N/A	Fair Condition
MCMB	Main Campus Misc. Buildings	AUX	18,429	\$4,319,139	\$341,000	0.08	1960	Excellent Condition
NFH	North Foundation Hall	AD	67,691	\$23,900,009	\$6,590,817	0.28	1959	Fair Condition
OC	Oakland Center	AUX	146,693	\$2,496,108	\$6,125,878	0.24	1959	Fair Condition
ODH	O'Dowd Hall	AD	105,000	\$38,952,643	\$8,460,109	0.22	1982	Fair Condition
OIT	O'Dowd Hall IT Network Building	UNIV	822	\$2,122,182	\$10,262	0.00	2011	Excellent Condition
OUInc.1	O.U. INCubator Health Enhancement Bldg	UNIV	11,385	\$1,888,240	\$427,504	0.23	1983	Fair Condition
OUInc.2	O.U. INCubator Shotwell Gustafson	AUX	25,850	\$4,543,779	\$866,498	0.19	1929	Fair Condition
PH	Pawley Hall	AD	132,406	\$30,386,301	\$3,746,065	0.12	2002	Good Condition
PRY	Pryale Hall	AD	20,829	\$4,034,521	\$1,588,209	0.39	1963	Below Average
PS1	Parking Structure	UNIV	179,820	\$10,717,578	\$65,100	0.01	2002	Excellent Condition
PSS	Police and Support Services	UNIV	26,444	\$4,422,035	\$1,113,949	0.25	1976	Fair Condition
SEB	Science and Engineering Building	AD	165,494	\$54,718,906	\$5,598,307	0.10	1997	Good Condition
SFH	South Foundation Hall	AD	55,041	\$10,661,293	\$3,916,705	0.37	1959	Below Average
SRAC	Student Recreation and Athletic Center	AD	253,494	\$44,190,993	\$2,779,385	0.06	1998	Excellent Condition
SS	Spenser Substation	UNIV	14,769	\$2,596,019	\$77,964	0.03	2003	Excellent Condition
SSC	Steve Sharf Clubhouse	AUX	9,900	\$3,591,700	\$30,000	0.00	2011	Excellent Condition
SST	Sunset Terrace	HS	12,587	\$2,666,637	\$440,186	0.17	1952	Fair Condition
VAR	Varner Hall	AD	119,939	\$36,299,782	\$12,987,090	0.36	1970	Below Average
VBH	Vandenberg Hall	HS	178,321	\$42,175,496	\$16,434,348	0.39	1967	Below Average
VWH	Van Wagner House	HS	43,305	\$10,242,259	\$2,677,432	0.26	1965	Fair Condition
WH	Wilson Hall and Meadow Brook Theatre	AD	98,153	\$36,556,700	\$18,098,819	0.50	1967	Poor Condition
Grand Totals:			3,095,954	\$921,849,067	\$201,904,688	0.22		Fair Condition

Note: FRC excludes furnishing and furniture cost.

**Detailed Project Totals
Facility Condition Analysis
Project Class by Priority Class**

Project Class	Priority 1	Priority 2	Priority 3	Priority 4	Priority 5	Subtotal
PR = Plant Renewal	\$573,705	\$4,410,127	\$60,531,949	\$50,400,833	\$27,678,754	\$143,595,368
DPR = Deferred Renewal	\$1,284,782	\$6,184,397	\$15,051,588	\$10,716,824	\$15,130,046	\$48,367,637
PA = Plant Adaption	\$0	\$0	\$879,532	\$1,994,015	\$7,068,137	\$9,941,683
TOTALS	\$1,858,487	\$10,594,524	\$76,463,069	\$63,111,672	\$49,876,937	\$201,904,688

Facility Replacement Cost	\$921,849,067
----------------------------------	----------------------

Facility Condition Needs Index	0.22
---------------------------------------	-------------

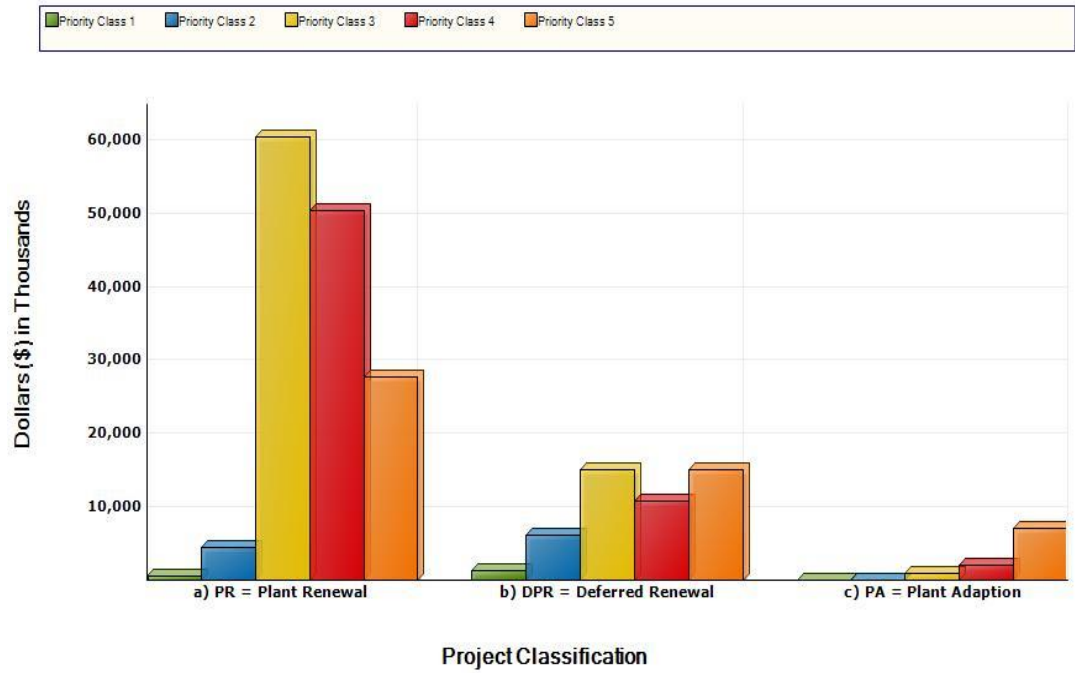
Gross Square Feet	3,095,954
--------------------------	------------------

Total Cost Per Square Foot	\$65.20
-----------------------------------	----------------

FACILITY CONDITION ANALYSIS

Project Class by Priority Class

ALL : ALL BUILDINGS



**Detailed Project Total
Facility Condition Analysis
System Code by Project Class**

System Code	System Description	PR = Plant Renewal	DPR = Deferred Renewal	PA = Plant Adaption	Subtotal	%
AC	ACCESSIBILITY	\$2,470,466	\$491,431	\$63,108	\$3,025,005	1.50%
EL	ELECTRICAL	\$10,238,216	\$3,603,440	\$612,606	\$14,454,261	7.16%
EN	ENERGY	\$2,157,934	\$1,774,168	\$0	\$3,932,102	1.95%
ES	EXTERIOR	\$12,572,078	\$4,902,925	\$116,846	\$17,591,849	8.71%
FS	FIRE/LIFE SAFETY	\$8,698,081	\$1,114,782	\$8,649,623	\$18,459,580	9.14%
HE	HEALTH	\$439,906	\$704,124	\$0	\$1,144,029	0.57%
HT	HIGH TEMP/HEAT WATER	\$10,554,192	\$1,618,468	\$0	\$12,172,660	6.03%
HV	HVAC	\$31,803,508	\$6,453,230	\$0	\$38,256,739	18.95%
IS	INTERIOR/FINISH SYS.	\$20,746,713	\$6,260,987	\$499,500	\$27,507,200	13.62%
IT	INFORMATION TECHNOLOGY	\$22,075,205	\$0	\$0	\$22,075,205	10.93%
PL	PLUMBING	\$17,637,805	\$1,476,530	\$0	\$19,114,335	9.47%
RW	ROAD/WALKS/PARKING LOTS	\$1,686,504	\$1,375,582	\$0	\$3,062,086	1.52%
SI	SITE	\$1,625,967	\$15,805,881	\$0	\$17,431,848	8.63%
SS	SECURITY SYSTEMS	\$0	\$41,048	\$0	\$41,048	0.02%
VT	VERT. TRANSPORTATION	\$888,793	\$2,747,948	\$0	\$3,636,741	1.80%
	TOTALS	\$143,595,368	\$48,370,544	\$9,941,683	\$201,904,688	100.00%

Facility Replacement Cost	\$921,849,067
---------------------------	---------------

Facility Condition Needs Index	0.22
--------------------------------	------

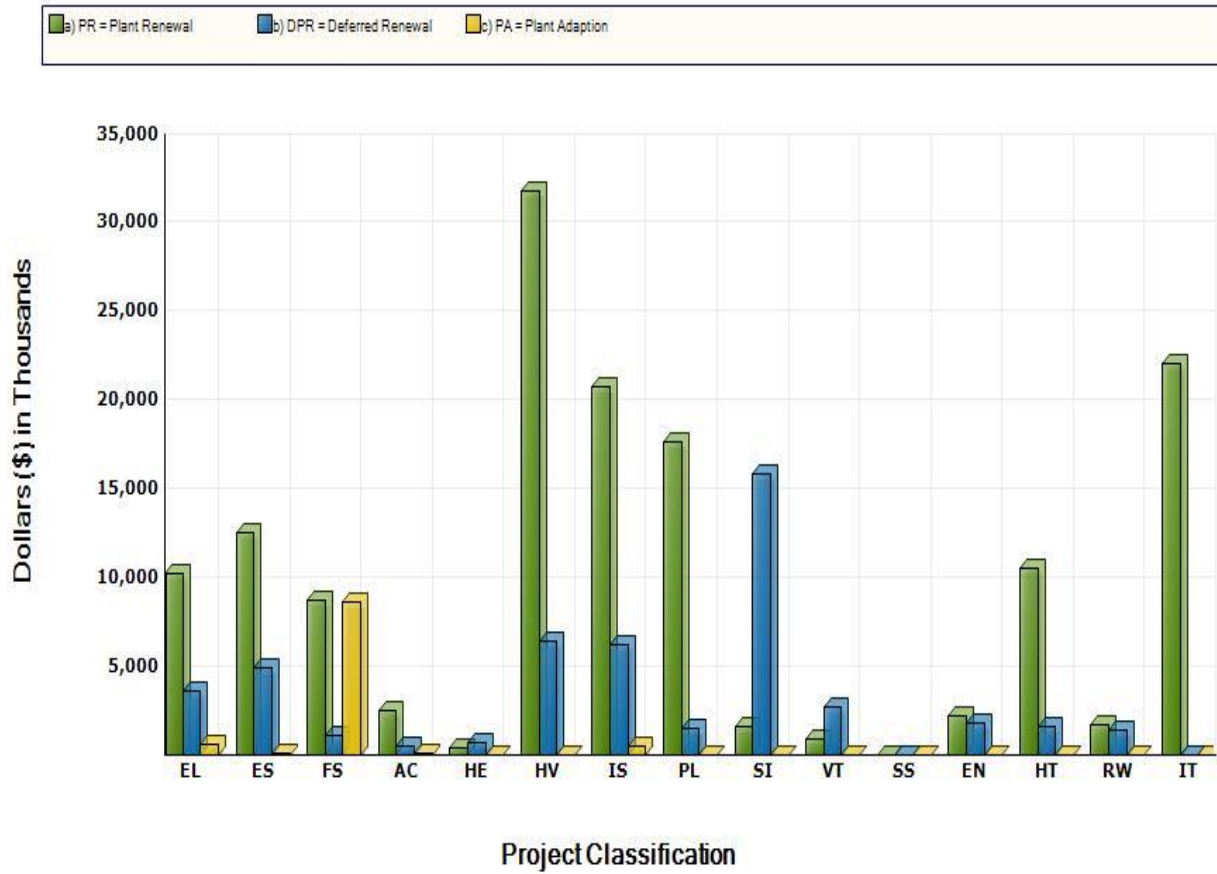
Gross Square Feet	3,095,954
-------------------	-----------

Total Cost Per Square Foot	\$65.20
----------------------------	---------

FACILITY CONDITION ANALYSIS

System Code by Project Class

ALL : ALL BUILDINGS



**Detailed Project Total
Facility Condition Analysis
System Code by Priority Class**

Priority Class

Code	System Description	1	2	3	4	5	Subtotal
		FY 14	FY 15	FY 16-19	FY 20-23	FY 24+	
AC	ACCESSIBILITY	\$29,262	\$151,948	\$1,188,564	\$1,223,765	\$431,465	\$3,025,004
EL	ELECTRICAL	\$97,558	\$425,429	\$3,301,824	\$2,296,657	\$8,332,793	\$14,454,261
EN	ENERGY	\$41,295	\$378,875	\$1,189,857	\$1,645,770	\$676,307	\$3,932,104
ES	EXTERIOR	\$236,008	\$1,544,636	\$6,283,341	\$8,250,428	\$1,277,436	\$17,591,849
FS	FIRE/LIFE SAFETY	\$154,737	\$806,606	\$3,907,377	\$5,383,544	\$8,207,316	\$18,459,580
HE	HEALTH	\$46,264	\$380,571	\$290,096	\$396,413	\$30,684	\$1,144,029
HT	HIGH TEMP/HEAT WATER	\$102,324	\$518,123	\$6,810,168	\$4,093,153	\$648,893	\$12,172,660
HV	HVAC	\$328,495	\$2,876,630	\$11,064,727	\$19,983,002	\$4,003,885	\$38,256,739
IS	INTERIOR/FINISH SYS.	\$691,723	\$2,650,834	\$9,145,800	\$7,853,172	\$7,165,671	\$27,507,200
IT	INFORMATION TECHNOLOGY	\$10,262	\$0	\$15,579,795	\$1,515,930	\$4,969,219	\$22,075,205
PL	PLUMBING	\$70,559	\$495,196	\$9,373,555	\$5,760,994	\$3,414,031	\$19,114,335
RW	ROAD/WALKS/PARKING LOT	\$0	\$45,496	\$2,431,980	\$543,795	\$40,814	\$3,062,086
SI	SITE	\$0	\$160,206	\$3,713,279	\$3,634,502	\$9,923,862	\$17,431,848
SS	SECURITY SYSTEMS	\$0	\$41,048	\$0	\$0	\$0	\$41,048
VT	VERT. TRANSPORTATION	\$50,000	\$118,928	\$2,182,706	\$530,546	\$754,562	\$3,636,741
	TOTALS	\$1,858,487	\$10,594,526	\$76,463,069	\$63,111,671	\$49,876,938	\$201,904,688

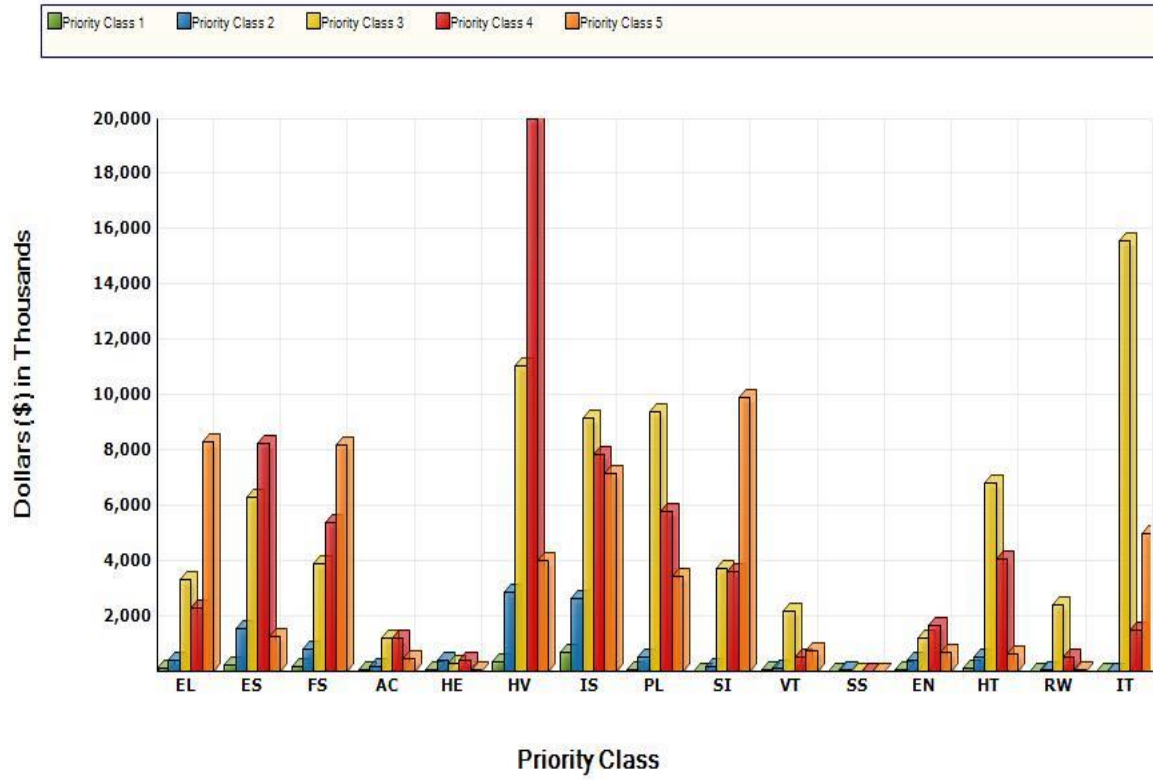
Facility Replacement Cost	\$921,849,067
---------------------------	---------------

Facility Condition Needs Index	0.22
--------------------------------	------

Gross Square Feet	3,095,954
-------------------	-----------

Total Cost Per Square Foot	\$65.20
----------------------------	---------

FACILITY CONDITION ANALYSIS
System Code by Priority Class
ALL : ALL BUILDINGS



V. Implementation Plan

State Funding Request

In the future, as additional state projects are considered, Oakland University has need for the following based on program growth, opportunity and State needs:

Oakland University Varner Hall Expansion

The proposed Oakland University Varner Hall Expansion is the University's highest priority capital outlay request and is designed to provide state-of-the-art instructional facilities for rapidly growing academic programs in the Social Science disciplines of Psychology, Political Science/Public Administration, History, Sociology, Anthropology, Social Work, and Criminal Justice, as well as the disciplines of Communication/Journalism, Writing and Rhetoric, and Music, Theater, and Dance. The facility will house classrooms, studios, practice rooms, research and computer labs, and faculty and administrative offices. The project will encompass primarily new construction and will be directly attached to the existing Varner Hall, currently the home for many of these departments. The expanded facility will provide technology enabled, discipline specific teaching studios reflecting advanced design that will accommodate students in dozens of majors offered by the numerous departments in the College of Arts and Sciences. The proposed Varner Hall Expansion will total approximately 258,000 gross square feet of new academic space. This represents a 106% total increase in space for the units involved. Additional space is crucial to address the current severe space shortages as well as to sustain the desired growth in enrollment across the College of Arts and Sciences, which produces 62% of the University's student credit hours. The proposed Varner Hall Expansion is designed to accommodate the growth in size and diversity of academic programs that promote the quality of our educational, scholarly, and community outreach activities. The proposed project will provide a focal point for units in the College of Arts and Sciences that serve the region of Southeast Michigan.

University Funded Priorities

Campus Infrastructure (funded)

All subprojects associated with the infrastructure improvements are presently under construction or are complete and operational. They include improvements to the existing high temperature hot water distribution system (completed and operational), the construction of an independent and secure structure that will house information technology hardware (complete and operational), the renovation of O'Dowd Hall's curtain wall system (complete and operational), and the technology and wiring upgrades to O'Dowd Hall (nearly complete).

Oakland University William Beaumont School of Medicine (OUWB) Renovations (funded)

Currently in design or various stages of construction, these renovations consist of approximately 32,000 square feet in Hannah Hall and 23,000 square feet in O'Dowd Hall. The outcome will be a new gross anatomy lab, expanded student lounge,

upgrades to 6 classrooms, expanded study areas, active learning classroom space and other academic department enhancements.

Undergraduate Student Housing (funded)

Phase I, currently under construction, consists of 504 additional beds to support the growing demand for on campus student housing. Expanding housing is in keeping with the campus master plan goal of having 4,000 residential students at Oakland University by year 2030.

Parking Garage (funded)

A new parking deck, currently under construction, will provide 1,245 additional parking spaces to accommodate the increased demand as Oakland University grows.

Elliott Tower (funded)

The Elliott Tower development, currently under construction, will enhance the campus experience by providing a unique recognizable structure that will be visible from locations on campus and off. It will provide needed outdoor gathering space for the campus community. The entire cost is funded by a generous gift from Hugh and Nancy Elliott.

North Foundation Admissions Welcome Center (funded)

The renovation of existing space in North Foundation Hall, currently under construction, will enhance and support the activities of the admissions department. It will become the destination hub for student recruitment and retention and will serve as the University's front door.

PSS Renovation (funded)

A phased renovation, this work will provide infrastructure, space and operational enhancements for Oakland's Police department.

QUEC (funded)

Funded by the State and University matching funds as part of the 2012 Capital Outlay, the 128,000 square foot Engineering Center is currently under construction. It will provide state-of-the-art instructional, research and development space for the School of Engineering and Computer Science and will be occupied fall of 2014.

Upper Fields Development (funded)

The sports and recreation complex currently under construction will provide tennis courts, soccer fields, track, campus recreation fields, grand stand and support structures for Oakland's Athletic and Campus Recreation programs.

Facilities Management Addition (funded)

Construction of the Facilities Management Addition to the Building and Grounds Building currently under construction will consolidate the departments within the Facility Management Organization, provide needed space and promote a more efficient operation.

Plant Renewal / Deferred Plant Renewal

As previously noted, Plant Renewal and Deferred Plant Renewal projects total \$192 million of the \$202 million Facility Condition Analysis. The current annual investment into deferred plant renewal and plant renewal is approximately \$1.6 million from General Fund budgets and maintenance endowments; between \$1.5 million and \$5.0 million from Auxiliaries Maintenance Reserves; and \$0.7 million from University Technology Services budgets.